

PHYHIPL (N-14): sc-165232

BACKGROUND

PHYHIPL (phytanoyl-CoA 2-hydroxylase interacting protein-like), also known as phytanoyl-CoA hydroxylase-interacting protein-like, is a 376 amino acid protein that contains one fibronectin type-III domain and belongs to the PHYHIP family. Conserved in chimpanzee, canine, mouse, rat, chicken, zebrafish and *Caenorhabditis elegans*, PHYHIPL exists as three alternatively spliced isoforms. PHYHIPL is a down-regulated target of IRX1, a homeobox tumor suppressor gene linked to gastric carcinoma. PHYHIPL may also play a role in the development of the central system. The gene that encodes PHYHIPL maps to human chromosome 10q21.1.

REFERENCES

- Gerhard, D.S., Wagner, L., Feingold, E.A., Shenmen, C.M., Grouse, L.H., Schuler, G., Klein, S.L., Old, S., Rasooly, R., Good, P., Guyer, M., Peck, A.M., Derge, J.G., Lipman, D., Collins, F.S., Jang, W., Sherry, S., et al. 2004. The status, quality, and expansion of the NIH full-length cDNA project: the mammalian gene collection (MGC). *Genome Res.* 14: 2121-2127.
- Deloukas, P., Earthrowl, M.E., Grafham, D.V., Rubenfield, M., French, L., Steward, C.A., Sims, S.K., Jones, M.C., Searle, S., Scott, C., Howe, K., Hunt, S.E., Andrews, T.D., Gilbert, J.G., Swarbreck, D., Ashurst, J.L., et al. 2004. The DNA sequence and comparative analysis of human chromosome 10. *Nature* 429: 375-381.
- Grupe, A., Li, Y., Rowland, C., Nowotny, P., Hinrichs, A.L., Smemo, S., Kauwe, J.S., Maxwell, T.J., Cherny, S., Doil, L., Tacey, K., van Luchene, R., Myers, A., Wavrant-De Vrièze, F., Kaleem, M., Hollingworth, P., et al. 2006. A scan of chromosome 10 identifies a novel locus showing strong association with late-onset Alzheimer disease. *Am. J. Hum. Genet.* 78: 78-88.
- Gurok, U., Loebbert, R.W., Meyer, A.H., Mueller, R., Schoemaker, H., Gross, G. and Behl, B. 2007. Laser capture microdissection and microarray analysis of dividing neural progenitor cells from the adult rat hippocampus. *Eur. J. Neurosci.* 26: 1079-1090.
- Weikard, R., Goldammer, T., Eberlein, A. and Kuehn, C. 2009. Novel transcripts discovered by mining genomic DNA from defined regions of bovine chromosome 6. *BMC Genomics* 10: 186.

CHROMOSOMAL LOCATION

Genetic locus: PHYHIPL (human) mapping to 10q21.1; Phyhipl (mouse) mapping to 10 B5.3.

SOURCE

PHYHIPL (N-14) is an affinity purified goat polyclonal antibody raised against a peptide mapping at the N-terminus of PHYHIPL of human origin.

PRODUCT

Each vial contains 200 µg IgG in 1.0 ml of PBS with < 0.1% sodium azide and 0.1% gelatin.

Blocking peptide available for competition studies, sc-165232 P, (100 µg peptide in 0.5 ml PBS containing < 0.1% sodium azide and 0.2% BSA).

APPLICATIONS

PHYHIPL (N-14) is recommended for detection of PHYHIPL of mouse, rat and human origin by Western Blotting (starting dilution 1:200, dilution range 1:100-1:1000), immunoprecipitation [1-2 µg per 100-500 µg of total protein (1 ml of cell lysate)], immunofluorescence (starting dilution 1:50, dilution range 1:50-1:500) and solid phase ELISA (starting dilution 1:30, dilution range 1:30-1:3000); non cross-reactive with PHYHIP.

PHYHIPL (N-14) is also recommended for detection of PHYHIPL in additional species, including canine, bovine and porcine.

Suitable for use as control antibody for PHYHIPL siRNA (h): sc-90711, PHYHIPL siRNA (m): sc-152241, PHYHIPL shRNA Plasmid (h): sc-90711-SH, PHYHIPL shRNA Plasmid (m): sc-152241-SH, PHYHIPL shRNA (h) Lentiviral Particles: sc-90711-V and PHYHIPL shRNA (m) Lentiviral Particles: sc-152241-V.

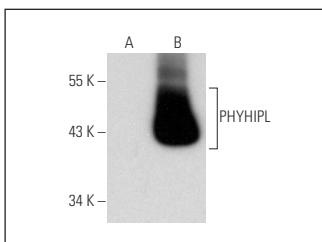
Molecular Weight of PHYHIPL isoforms 1/2/3: 42/40/6 kDa.

Positive Controls: mouse testis extract: sc-2405 or PHYHIPL (m): 293T Lysate: sc-122551.

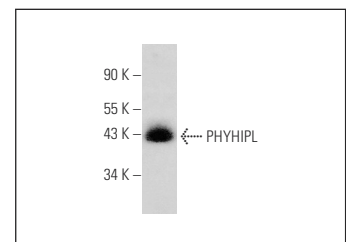
RECOMMENDED SECONDARY REAGENTS

To ensure optimal results, the following support (secondary) reagents are recommended: 1) Western Blotting: use donkey anti-goat IgG-HRP: sc-2020 (dilution range: 1:2000-1:100,000) or Cruz Marker™ compatible donkey anti-goat IgG-HRP: sc-2033 (dilution range: 1:2000-1:5000), Cruz Marker™ Molecular Weight Standards: sc-2035, TBS Blotto A Blocking Reagent: sc-2333 and Western Blotting Luminol Reagent: sc-2048. 2) Immunoprecipitation: use Protein A/G PLUS-Agarose: sc-2003 (0.5 ml agarose/2.0 ml). 3) Immunofluorescence: use donkey anti-goat IgG-FITC: sc-2024 (dilution range: 1:100-1:400) or donkey anti-goat IgG-TR: sc-2783 (dilution range: 1:100-1:400) with UltraCruz™ Mounting Medium: sc-24941.

DATA



PHYHIPL (N-14): sc-165232. Western blot analysis of PHYHIPL expression in non-transfected: sc-117752 (A) and mouse PHYHIPL transfected: sc-122551 (B) 293T whole cell lysates.



PHYHIPL (N-14): sc-165232. Western blot analysis of PHYHIPL expression in mouse testis tissue extract.

STORAGE

Store at 4° C, **DO NOT FREEZE**. Stable for one year from the date of shipment. Non-hazardous. No MSDS required.

RESEARCH USE

For research use only, not for use in diagnostic procedures.