

# PLEKHQ1 (S-14): sc-165258

## BACKGROUND

PLEKHQ1 (pleckstrin homology domain containing, family Q member 1), also known as PLEKHQ2 (pleckstrin homology domain containing, family Q member 2), PP1628 or pp9099, is a 490 amino acid protein that is believed to contain at least one pleckstrin homology (PH) domain. PH domains are responsible for mediating protein-protein and protein-lipid interactions. In humans, the gene encoding PLEKHQ1 is found on chromosome 15 and is known to be one of many circulat-responsive genes. Circulat is a plant extract formulation that was derived to prevent the severe onset of type 2 diabetes. Chromosome 15 makes up approximately 3% of the human genome and contains 106 million base pairs encoding more than 700 genes. Angelman and Prader-Willi syndromes are associated with loss of function or deletion of genes on chromosome 15q. Tay-Sachs disease and Marfan syndrome are also associated with chromosome 15.

## CHROMOSOMAL LOCATION

Genetic locus: PLEKHQ2 (human) mapping to 15q22.31; Plekho2 (mouse) mapping to 9 C.

## SOURCE

PLEKHQ1 (S-14) is an affinity purified goat polyclonal antibody raised against a peptide mapping within an internal region of PLEKHQ1 of human origin.

## PRODUCT

Each vial contains 200 µg IgG in 1.0 ml of PBS with < 0.1% sodium azide and 0.1% gelatin.

Blocking peptide available for competition studies, sc-165258 P, (100 µg peptide in 0.5 ml PBS containing < 0.1% sodium azide and 0.2% BSA).

## STORAGE

Store at 4° C, **\*\*DO NOT FREEZE\*\***. Stable for one year from the date of shipment. Non-hazardous. No MSDS required.

## APPLICATIONS

PLEKHQ1 (S-14) is recommended for detection of PLEKHQ1 of mouse, rat and human origin by Western Blotting (starting dilution 1:200, dilution range 1:100-1:1000), immunoprecipitation [1-2 µg per 100-500 µg of total protein (1 ml of cell lysate)], immunofluorescence (starting dilution 1:50, dilution range 1:50-1:500) and solid phase ELISA (starting dilution 1:30, dilution range 1:30-1:3000).

PLEKHQ1 (S-14) is also recommended for detection of PLEKHQ1 in additional species, including equine, canine and porcine.

Suitable for use as control antibody for PLEKHQ1 siRNA (h): sc-90098, PLEKHQ1 siRNA (m): sc-152324, PLEKHQ1 shRNA Plasmid (h): sc-90098-SH, PLEKHQ1 shRNA Plasmid (m): sc-152324-SH, PLEKHQ1 shRNA (h) Lentiviral Particles: sc-90098-V and PLEKHQ1 shRNA (m) Lentiviral Particles: sc-152324-V.

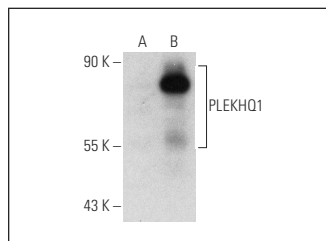
Molecular Weight of PLEKHQ1 isoforms: 53/48 kDa.

Positive Controls: PLEKHQ1 (m): 293T Lysate: sc-122638.

## RECOMMENDED SECONDARY REAGENTS

To ensure optimal results, the following support (secondary) reagents are recommended: 1) Western Blotting: use donkey anti-goat IgG-HRP: sc-2020 (dilution range: 1:2000-1:100,000) or Cruz Marker™ compatible donkey anti-goat IgG-HRP: sc-2033 (dilution range: 1:2000-1:5000), Cruz Marker™ Molecular Weight Standards: sc-2035, TBS Blotto A Blocking Reagent: sc-2333 and Western Blotting Luminol Reagent: sc-2048. 2) Immunoprecipitation: use Protein A/G PLUS-Agarose: sc-2003 (0.5 ml agarose/2.0 ml). 3) Immunofluorescence: use donkey anti-goat IgG-FITC: sc-2024 (dilution range: 1:100-1:400) or donkey anti-goat IgG-TR: sc-2783 (dilution range: 1:100-1:400) with UltraCruz™ Mounting Medium: sc-24941.

## DATA



PLEKHQ1 (S-14): sc-165258. Western blot analysis of PLEKHQ1 expression in non-transfected: sc-117752 (A) and mouse PLEKHQ1 transfected: sc-122638 (B) 293T whole cell lysates.

## RESEARCH USE

For research use only, not for use in diagnostic procedures.

## PROTOCOLS

See our web site at [www.scbt.com](http://www.scbt.com) or our catalog for detailed protocols and support products.

**MONOS**  
Satisfaction  
Guaranteed

Try **PLEKHQ1 (SS-23): sc-100412**, our highly recommended monoclonal alternative to PLEKHQ1 (S-14).