

PRAT4B (C-19): sc-165282

BACKGROUND

PRAT4B, also known as CNPY4 (canopy 4 homolog), is a 248 amino acid protein that contains one saposin B-type domain and belongs to the canopy family. Localizing to endoplasmic reticulum, PRAT4B is ubiquitously expressed, with highest expression in lung, spleen, thymus and uterus. PRAT4B expression is linked to a decrease in cell surface TLR4, although the total cellular TLR4 protein level remains unchanged, indicating that PRAT4B is involved in the regulation of cell surface expression of TLR4. PRAT4B associates with TLR4 alone or with TLR4/MD2, but does not associate with MD2 alone or with TLR2, another Toll-like receptor. Expression of PRAT4B significantly increases in sepsis and severe sepsis patients, with highest levels in severe sepsis patients, suggesting that PRAT4B may play an important role in production and development of abnormal inflammatory response in children with sepsis. The gene that encodes PRAT4B maps to human chromosome 7q22.1.

REFERENCES

- Garson, J.A., et al. 1991. Improvement of HCV genome detection with "short" PCR products. *Lancet* 338: 1466-1467.
- Ketheesan, N., et al. 2002. Demonstration of a cell-mediated immune response in melioidosis. *J. Infect. Dis.* 186: 286-289.
- Konno, K., et al. 2006. A molecule that is associated with Toll-like receptor 4 and regulates its cell surface expression. *Biochem. Biophys. Res. Commun.* 339: 1076-1082.
- Wakabayashi, Y., et al. 2006. A protein associated with toll-like receptor 4 (PRAT4A) regulates cell surface expression of TLR4. *J. Immunol.* 177: 1772-1779.
- Takahashi, K., et al. 2007. A protein associated with Toll-like receptor (TLR) 4 (PRAT4A) is required for TLR-dependent immune responses. *J. Exp. Med.* 204: 2963-2976.
- Yang, W.G., et al. 2008. Role of transduce molecules and modulatory factors of signal pathways of Toll-like receptor in inflammatory response of children with sepsis. *Zhongguo Wei Zhong Bing Ji Jiu Yi Xue* 20: 561-564.
- Wang, G.B., et al. 2008. Changes and significance for regulatory factors for signal pathways of Toll-like receptors in immunological pathogenesis of Kawasaki disease. *Zhonghua Er Ke Za Zhi* 46: 49-54.

CHROMOSOMAL LOCATION

Genetic locus: CNPY4 (human) mapping to 7q22.1.

SOURCE

PRAT4B (C-19) is an affinity purified goat polyclonal antibody raised against a peptide mapping at the C-terminus of PRAT4B of human origin.

STORAGE

Store at 4° C, ****DO NOT FREEZE****. Stable for one year from the date of shipment. Non-hazardous. No MSDS required.

RESEARCH USE

For research use only, not for use in diagnostic procedures.

PRODUCT

Each vial contains 200 µg IgG in 1.0 ml of PBS with < 0.1% sodium azide and 0.1% gelatin.

Blocking peptide available for competition studies, sc-165282 P, (100 µg peptide in 0.5 ml PBS containing < 0.1% sodium azide and 0.2% BSA).

APPLICATIONS

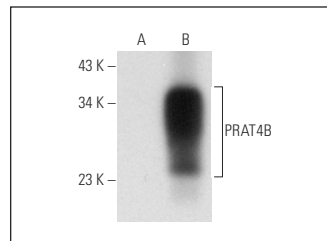
PRAT4B (C-19) is recommended for detection of PRAT4B of human origin by Western Blotting (starting dilution 1:200, dilution range 1:100-1:1000), immunoprecipitation [1-2 µg per 100-500 µg of total protein (1 ml of cell lysate)], immunofluorescence (starting dilution 1:50, dilution range 1:50-1:500) and solid phase ELISA (starting dilution 1:30, dilution range 1:30-1:3000); non cross-reactive with CNPY1, MSAP or PRAT4A.

Suitable for use as control antibody for PRAT4B siRNA (h): sc-89627, PRAT4B shRNA Plasmid (h): sc-89627-SH and PRAT4B shRNA (h) Lentiviral Particles: sc-89627-V.

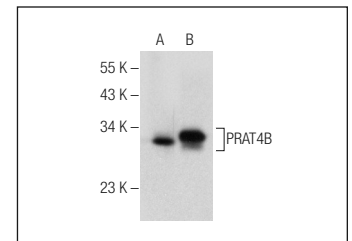
Molecular Weight of PRAT4B: 28 kDa.

Positive Controls: PRAT4B (h): 293T Lysate: sc-112539 or MES-SA/Dx5 cell lysate: sc-2284.

DATA



PRAT4B (C-19): sc-165282. Western blot analysis of PRAT4B expression in non-transfected: sc-117752 (A) and human PRAT4B transfected: sc-112539 (B) 293T whole cell lysates.



PRAT4B (C-19): sc-165282. Western blot analysis of PRAT4B expression in non-transfected: sc-117752 (A) and human PRAT4B transfected: sc-114856 (B) 293T whole cell lysates.

PROTOCOLS

See our web site at www.scbt.com or our catalog for detailed protocols and support products.



Try **PRAT4B (E-10): sc-514307**, our highly recommended monoclonal alternative to PRAT4B (C-19).