

PSMB11 (G-15): sc-165306

BACKGROUND

In eukaryotic cells, selective breakdown of cellular proteins is ensured by their ubiquitination and subsequent degradation by the 26S Proteasome. The 26S Proteasome is a protease complex that selectively breaks down proteins that have been modified by polyubiquitin chains. It is made up of two multi-subunit complexes: the 20S Proteasome chamber, which serves as the proteolytic core of the complex, and two 19S regulatory particles which recognize and unfold ubiquitinated proteins. The 20S Proteasome chamber contains α subunits (which are structural) and β subunits (which are predominantly catalytic). The outer two rings in the proteasome consist of seven α subunits each, and the inner two rings each consist of seven β subunits. PSMB11 (Proteasome subunit β type-11), also known as BETA5T (Proteasome subunit β -5t) is a 300 amino acid protein that plays an important role in CD8-positive T-cells and reduces chymotrypsin-like activity in proteasomes.

CHROMOSOMAL LOCATION

Genetic locus: PSMB11 (human) mapping to 14q11.2; Psmb11 (mouse) mapping to 14 C3.

SOURCE

PSMB11 (G-15) is an affinity purified goat polyclonal antibody raised against a peptide mapping within an internal region of PSMB11 of human origin.

PRODUCT

Each vial contains 200 μ g IgG in 1.0 ml of PBS with < 0.1% sodium azide and 0.1% gelatin.

Blocking peptide available for competition studies, sc-165306 P, (100 μ g peptide in 0.5 ml PBS containing < 0.1% sodium azide and 0.2% BSA).

RESEARCH USE

For research use only, not for use in diagnostic procedures.

APPLICATIONS

PSMB11 (G-15) is recommended for detection of PSMB11 of mouse, rat and human origin by Western Blotting (starting dilution 1:200, dilution range 1:100-1:1000), immunoprecipitation [1-2 μ g per 100-500 μ g of total protein (1 ml of cell lysate)], immunofluorescence (starting dilution 1:50, dilution range 1:50-1:500) and solid phase ELISA (starting dilution 1:30, dilution range 1:30-1:3000); non cross-reactive with other PSMB family members.

PSMB11 (G-15) is also recommended for detection of PSMB11 in additional species, including equine, bovine and porcine.

Suitable for use as control antibody for PSMB11 siRNA (h): sc-92455, PSMB11 siRNA (m): sc-152555, PSMB11 shRNA Plasmid (h): sc-92455-SH, PSMB11 shRNA Plasmid (m): sc-152555-SH, PSMB11 shRNA (h) Lentiviral Particles: sc-92455-V and PSMB11 shRNA (m) Lentiviral Particles: sc-152555-V.

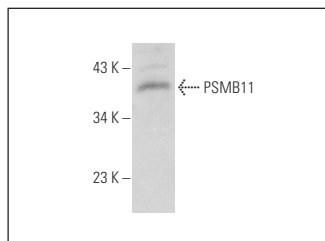
Molecular Weight of PSMB11: 33 kDa.

Positive Controls: MTE1D whole cell lysate: sc-364918.

RECOMMENDED SECONDARY REAGENTS

To ensure optimal results, the following support (secondary) reagents are recommended: 1) Western Blotting: use donkey anti-goat IgG-HRP: sc-2020 (dilution range: 1:2000-1:100,000) or Cruz Marker™ compatible donkey anti-goat IgG-HRP: sc-2033 (dilution range: 1:2000-1:5000), Cruz Marker™ Molecular Weight Standards: sc-2035, TBS Blotto A Blocking Reagent: sc-2333 and Western Blotting Luminol Reagent: sc-2048. 2) Immunoprecipitation: use Protein A/G PLUS-Agarose: sc-2003 (0.5 ml agarose/2.0 ml). 3) Immunofluorescence: use donkey anti-goat IgG-FITC: sc-2024 (dilution range: 1:100-1:400) or donkey anti-goat IgG-TR: sc-2783 (dilution range: 1:100-1:400) with UltraCruz™ Mounting Medium: sc-24941.

DATA



PSMB11 (G-15): sc-165306. Western blot analysis of PSMB11 expression in MTE1D whole cell lysate.

STORAGE

Store at 4° C, **DO NOT FREEZE**. Stable for one year from the date of shipment. Non-hazardous. No MSDS required.

PROTOCOLS

See our web site at www.scbt.com or our catalog for detailed protocols and support products.



Try **PSMB11 (H-1): sc-515132** or **PSMB11 (A-5): sc-514317**, our highly recommended monoclonal alternatives to PSMB11 (G-15).