

SPARCL1 (N-12): sc-165539

BACKGROUND

SPARC (secreted protein acidic and rich in cysteine) is a phosphorylated, acidic, glycine-rich glycoprotein that is secreted by endothelial cells and is present in large amounts in the parietal endoderm of mouse embryos and in human placenta. SPARC-like protein 1 (SPARCL1), also known as high endothelial venule protein (Hevin) or MAST9, is a 664 amino acid member of the SPARC family of proteins. Highly expressed in lymph node, heart, lung, brain, skeletal muscle, ovary, colon and small intestine, SPARCL1 is a secreted protein that contains one EF-hand domain, one follistatin-like domain and one Kazal-like domain. SPARCL1 is implicated to play a role in neuronal remodeling and tumor suppression. The gene encoding SPARCL1 maps to chromosome 4q22.1.

REFERENCES

1. Online Mendelian Inheritance in Man, OMIM™. 2001. Johns Hopkins University, Baltimore, MD. MIM Number: 606041. World Wide Web URL: <http://www.ncbi.nlm.nih.gov/omim/>
2. Lau, C.P., et al. 2006. SPARC and Hevin expression correlate with tumour angiogenesis in hepatocellular carcinoma. *J. Pathol.* 210: 459-468.
3. Lively, S., et al. 2007. Analysis of the extracellular matrix protein SC1 during reactive gliosis in the rat lithium-pilocarpine seizure model. *Brain Res.* 1163: 1-9.
4. Esposito, I., et al. 2007. Tumor-suppressor function of SPARC-like protein 1/Hevin in pancreatic cancer. *Neoplasia* 9: 8-17.
5. Weimer, J.M., et al. 2008. A BAC transgenic mouse model to analyze the function of astroglial SPARCL1 (SC1) in the central nervous system. *Glia* 56: 935-941.
6. Lively, S., et al. 2008. Extracellular matrix protein SC1/hevin in the hippocampus following pilocarpine-induced status epilepticus. *J. Neurochem.* 107: 1335-1346.
7. Lively, S., et al. 2008. The extracellular matrix protein SC1/hevin localizes to excitatory synapses following status epilepticus in the rat lithium-pilocarpine seizure model. *J. Neurosci. Res.* 86: 2895-2905.

CHROMOSOMAL LOCATION

Genetic locus: SPARCL1 (human) mapping to 4q22.1.

SOURCE

SPARCL1 (N-12) is an affinity purified goat polyclonal antibody raised against a peptide mapping near the N-terminus of SPARCL1 of human origin.

PRODUCT

Each vial contains 200 µg IgG in 1.0 ml of PBS with < 0.1% sodium azide and 0.1% gelatin.

Blocking peptide available for competition studies, sc-165539 P, (100 µg peptide in 0.5 ml PBS containing < 0.1% sodium azide and 0.2% BSA).

RESEARCH USE

For research use only, not for use in diagnostic procedures.

APPLICATIONS

SPARCL1 (N-12) is recommended for detection of SPARCL1 of human origin by Western Blotting (starting dilution 1:200, dilution range 1:100-1:1000), immunoprecipitation [1-2 µg per 100-500 µg of total protein (1 ml of cell lysate)], immunofluorescence (starting dilution 1:50, dilution range 1:50-1:500) and solid phase ELISA (starting dilution 1:30, dilution range 1:30-1:3000).

SPARCL1 (N-12) is also recommended for detection of SPARCL1 in additional species, including canine.

Suitable for use as control antibody for SPARCL1 siRNA (h): sc-89018, SPARCL1 shRNA Plasmid (h): sc-89018-SH and SPARCL1 shRNA (h) Lentiviral Particles: sc-89018-V.

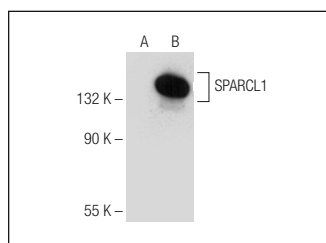
Molecular Weight of SPARCL1: 75 kDa.

Positive Controls: SPARCL1 (h): 293T Lysate: sc-114975.

RECOMMENDED SECONDARY REAGENTS

To ensure optimal results, the following support (secondary) reagents are recommended: 1) Western Blotting: use donkey anti-goat IgG-HRP: sc-2020 (dilution range: 1:2000-1:100,000) or Cruz Marker™ compatible donkey anti-goat IgG-HRP: sc-2033 (dilution range: 1:2000-1:5000), Cruz Marker™ Molecular Weight Standards: sc-2035, TBS Blotto A Blocking Reagent: sc-2333 and Western Blotting Luminol Reagent: sc-2048. 2) Immunoprecipitation: use Protein A/G PLUS-Agarose: sc-2003 (0.5 ml agarose/2.0 ml). 3) Immunofluorescence: use donkey anti-goat IgG-FITC: sc-2024 (dilution range: 1:100-1:400) or donkey anti-goat IgG-TR: sc-2783 (dilution range: 1:100-1:400) with UltraCruz™ Mounting Medium: sc-24941.

DATA



SPARCL1 (N-12): sc-165539. Western blot analysis of SPARCL1 expression in non-transfected: sc-117752 (A) and human SPARCL1 transfected: sc-114975 (B) 293T whole cell lysates.

STORAGE

Store at 4° C, **DO NOT FREEZE**. Stable for one year from the date of shipment. Non-hazardous. No MSDS required.



Try **SPARCL1 (G-5): sc-514275** or **SPARCL1 (F-8): sc-514262**, our highly recommended monoclonal alternatives to SPARCL1 (N-12).