

TMEM114 (V-14): sc-165733

BACKGROUND

TMEM114 is a 223 amino acid protein encoded by a gene that maps to human chromosome 16. Chromosome 16 encodes over 900 genes in approximately 90 million base pairs, makes up nearly 3% of human cellular DNA and is associated with a variety of genetic disorders. The GAN gene is located on chromosome 16 and, with mutation, may lead to giant axonal neuropathy, a nervous system disorder characterized by increasing malfunction with growth. The rare disorder Rubinstein-Taybi syndrome is also associated with chromosome 16, though through the CREBBP gene which encodes a critical CREB binding protein. Signs of Rubinstein-Taybi include mental retardation and predisposition to tumor growth and white blood cell neoplasias. Crohn's disease is a gastrointestinal inflammatory condition associated with chromosome 16 through the NOD2 gene. An association with systemic lupus erythematosus and a number of other autoimmune disorders with the pericentromeric region of chromosome 16 has led to the identification of SLC5A11 as a potential autoimmune modifier. The TMEM114 gene product has been provisionally designated TMEM114 pending further characterization.

REFERENCES

1. Ben Hamida, C., et al. 1997. Homozygosity mapping of giant axonal neuropathy gene to chromosome 16q24.1. *Neurogenetics* 1: 129-133.
2. Karlsson, J., et al. 2003. Novel quantitative trait loci controlling development of experimental autoimmune encephalomyelitis and proportion of lymphocyte subpopulations. *J. Immunol.* 170: 1019-1026.
3. Forabosco, P., et al. 2006. Meta-analysis of genome-wide linkage studies of systemic lupus erythematosus. *Genes Immun.* 7: 609-614.
4. Carneiro, L.A., et al. 2007. Nod-like receptors in innate immunity and inflammatory diseases. *Ann. Med.* 39: 581-593.
5. King, K., et al. 2007. Identification, evolution, and association study of a novel promoter and first exon of the human NOD2 (CARD15) gene. *Genomics* 90: 493-501.
6. Gervasini, C., et al. 2007. High frequency of mosaic CREBBP deletions in Rubinstein-Taybi syndrome patients and mapping of somatic and germline breakpoints. *Genomics* 90: 567-573.
7. Koop, O., et al. 2007. Genotype-phenotype analysis in patients with giant axonal neuropathy (GAN). *Neuromuscul. Disord.* 17: 624-630.
8. Tattoli, I., et al. 2007. The Nodosome: Nod1 and Nod2 control bacterial infections and inflammation. *Semin. Immunopathol.* 29: 289-301.

CHROMOSOMAL LOCATION

Genetic locus: TMEM114 (human) mapping to 16p13.2; Tmem114 (mouse) mapping to 16 A1.

SOURCE

TMEM114 (V-14) is an affinity purified goat polyclonal antibody raised against a peptide mapping within an internal region of TMEM114 of human origin.

RESEARCH USE

For research use only, not for use in diagnostic procedures.

PRODUCT

Each vial contains 200 µg IgG in 1.0 ml of PBS with < 0.1% sodium azide and 0.1% gelatin.

Blocking peptide available for competition studies, sc-165733 P, (100 µg peptide in 0.5 ml PBS containing < 0.1% sodium azide and 0.2% BSA).

APPLICATIONS

TMEM114 (V-14) is recommended for detection of TMEM114 of mouse, rat and human origin by Western Blotting (starting dilution 1:200, dilution range 1:100-1:1000), immunoprecipitation [1-2 µg per 100-500 µg of total protein (1 ml of cell lysate)], immunofluorescence (starting dilution 1:50, dilution range 1:50-1:500) and solid phase ELISA (starting dilution 1:30, dilution range 1:30-1:3000).

Suitable for use as control antibody for TMEM114 siRNA (h): sc-93049, TMEM114 siRNA (m): sc-140118, TMEM114 shRNA Plasmid (h): sc-93049-SH, TMEM114 shRNA Plasmid (m): sc-140118-SH, TMEM114 shRNA (h) Lentiviral Particles: sc-93049-V and TMEM114 shRNA (m) Lentiviral Particles: sc-140118-V.

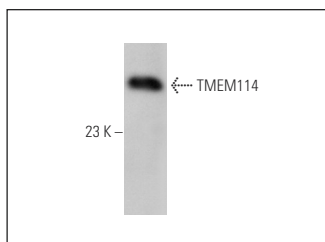
Molecular Weight of TMEM114: 24 kDa.

Positive Controls: Hs 181 Tes whole cell lysate: sc-364779.

RECOMMENDED SECONDARY REAGENTS

To ensure optimal results, the following support (secondary) reagents are recommended: 1) Western Blotting: use donkey anti-goat IgG-HRP: sc-2020 (dilution range: 1:2000-1:100,000) or Cruz Marker™ compatible donkey anti-goat IgG-HRP: sc-2033 (dilution range: 1:2000-1:5000), Cruz Marker™ Molecular Weight Standards: sc-2035, TBS Blotto A Blocking Reagent: sc-2333 and Western Blotting Luminol Reagent: sc-2048. 2) Immunoprecipitation: use Protein A/G PLUS-Agarose: sc-2003 (0.5 ml agarose/2.0 ml). 3) Immunofluorescence: use donkey anti-goat IgG-FITC: sc-2024 (dilution range: 1:100-1:400) or donkey anti-goat IgG-TR: sc-2783 (dilution range: 1:100-1:400) with UltraCruz™ Mounting Medium: sc-24941.

DATA



TMEM114 (V-14): sc-165733. Western blot analysis of TMEM114 expression in Hs 181 Tes whole cell lysate.

STORAGE

Store at 4° C, **DO NOT FREEZE**. Stable for one year from the date of shipment. Non-hazardous. No MSDS required.