

LRCH4 (H-10): sc-166009

BACKGROUND

Members of the leucine-rich repeat family include LRCH1, LRCH2, LRCH3 and LRCH4. All family members contain one calponin-homology domain and nine leucine-rich repeats. LRCH4 (leucine-rich repeats and calponin homology (CH) domain containing 4), also known as LRN, LRRN1, LRRN4 or SAP25, is a 683 amino acid protein that belongs to the leucine-rich repeat family. The carboxy-terminus of LRCH4 may act as a membrane anchor between cells, while the amino-terminus contains the leucine-rich domains is thought to be involved in ligand binding. The calponin homology (CH) domain is suggested to confer Actin binding to a variety of cytoskeletal and signaling molecules. The gene encoding LRCH4 maps to human chromosome 7, which houses over 1,000 genes and comprises nearly 5% of the human genome.

REFERENCES

1. Taguchi, A., et al. 1996. Molecular cloning of novel leucine-rich repeat proteins and their expression in the developing mouse nervous system. *Brain Res. Mol. Brain Res.* 35: 31-40.
2. Bañuelos, S., et al. 1998. Structural comparisons of calponin homology domains: implications for Actin binding. *Structure* 6: 1419-1431.
3. Liang, H., et al. 1998. Molecular anatomy of chromosome 7q deletions in myeloid neoplasms: evidence for multiple critical loci. *Proc. Natl. Acad. Sci. USA* 95: 3781-3785.
4. Gimona, M., et al. 2002. Functional plasticity of CH domains. *FEBS Lett.* 513: 98-106.
5. Hillier, L.W., et al. 2003. The DNA sequence of human chromosome 7. *Nature* 424: 157-164.
6. Spector, T.D., et al. 2006. Association between a variation in LRCH1 and knee osteoarthritis: a genome-wide single-nucleotide polymorphism association study using DNA pooling. *Arthritis Rheum.* 54: 524-532.

CHROMOSOMAL LOCATION

Genetic locus: LRCH4 (human) mapping to 7q22.1; Lrch4 (mouse) mapping to 5 G2.

SOURCE

LRCH4 (H-10) is a mouse monoclonal antibody specific for an epitope mapping between amino acids 145-178 near the N-terminus of LRCH4 of human origin.

PRODUCT

Each vial contains 200 µg IgG₁ kappa light chain in 1.0 ml of PBS with < 0.1% sodium azide and 0.1% gelatin.

Blocking peptide available for competition studies, sc-166009 P, (100 µg peptide in 0.5 ml PBS containing < 0.1% sodium azide and 0.2% stabilizer protein).

STORAGE

Store at 4° C, ****DO NOT FREEZE****. Stable for one year from the date of shipment. Non-hazardous. No MSDS required.

APPLICATIONS

LRCH4 (H-10) is recommended for detection of LRCH4 of mouse, rat and human origin by Western Blotting (starting dilution 1:100, dilution range 1:100-1:1000), immunoprecipitation [1-2 µg per 100-500 µg of total protein (1 ml of cell lysate)], immunofluorescence (starting dilution 1:50, dilution range 1:50-1:500), immunohistochemistry (including paraffin-embedded sections) (starting dilution 1:50, dilution range 1:50-1:500) and solid phase ELISA (starting dilution 1:30, dilution range 1:30-1:3000).

Suitable for use as control antibody for LRCH4 siRNA (h): sc-72376, LRCH4 siRNA (m): sc-72377, LRCH4 shRNA Plasmid (h): sc-72376-SH, LRCH4 shRNA Plasmid (m): sc-72377-SH, LRCH4 shRNA (h) Lentiviral Particles: sc-72376-V and LRCH4 shRNA (m) Lentiviral Particles: sc-72377-V.

Molecular Weight (predicted) of LRCH4: 73 kDa.

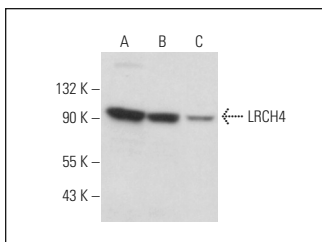
Molecular Weight (observed) of LRCH4: 83 kDa.

Positive Controls: TK-1 whole cell lysate: sc-364798, IMR-32 cell lysate: sc-2409 or HeLa whole cell lysate: sc-2200.

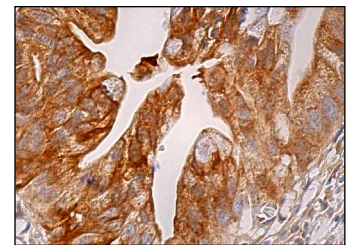
RECOMMENDED SUPPORT REAGENTS

To ensure optimal results, the following support reagents are recommended: 1) Western Blotting: use m-IgGκ BP-HRP: sc-516102 or m-IgGκ BP-HRP (Cruz Marker): sc-516102-CM (dilution range: 1:1000-1:10000), Cruz Marker™ Molecular Weight Standards: sc-2035, UltraCruz® Blocking Reagent: sc-516214 and Western Blotting Luminol Reagent: sc-2048. 2) Immunoprecipitation: use Protein A/G PLUS-Agarose: sc-2003 (0.5 ml agarose/2.0 ml). 3) Immunofluorescence: use m-IgGκ BP-FITC: sc-516140 or m-IgGκ BP-PE: sc-516141 (dilution range: 1:50-1:200) with UltraCruz® Mounting Medium: sc-24941 or UltraCruz® Hard-set Mounting Medium: sc-359850. 4) Immunohistochemistry: use m-IgGκ BP-HRP: sc-516102 with DAB, 50X: sc-24982 and Immunohistomount: sc-45086, or Organo/Limonene Mount: sc-45087.

DATA



LRCH4 (H-10): sc-166009. Western blot analysis of LRCH4 expression in HeLa (A), IMR-32 (B) and TK-1 (C) whole cell lysates.



LRCH4 (H-10): sc-166009. Immunoperoxidase staining of formalin fixed, paraffin-embedded human gall bladder tissue showing cytoplasmic and membrane staining of glandular cells.

RESEARCH USE

For research use only, not for use in diagnostic procedures.

PROTOCOLS

See our web site at www.scbt.com for detailed protocols and support products.