

# ADA3 (D-10): sc-166118

## BACKGROUND

TADA3L (transcriptional adapter 3-like), also known as ADA3, is a 432 amino acid nuclear protein that functions as a component of the PCAF (p300/CBP-associated factor) complex and belongs to the NGG1 family. The PCAF complex functions to acetylate histones in a nucleosomal context and is thought to have similar function to the yeast SAGA complex. TADA3L also functions as a component of the ATAC complex, which is a complex that has active acetyltransferase on histones H3 and H4. TADA3L is alternatively spliced into two isoforms and is encoded by a gene that maps to human chromosome 3. Chromosome 3 houses over 1,100 genes, including a chemokine receptor (CKR) gene cluster and a variety of human cancer-related gene loci. Key tumor suppressing genes on chromosome 3 include those that encode the apoptosis mediator RASSF1, the cell migration regulator HYAL1 and the angiogenesis suppressor SEMA3B. Marfan syndrome, porphyria, von Hippel-Lindau syndrome, osteogenesis imperfecta and Charcot-Marie-Tooth disease are a few of the numerous genetic diseases associated with chromosome 3.

## REFERENCES

1. De Jonghe, P., et al. 1997. Mutilating neuropathic ulcerations in a chromosome 3q13-q22 linked Charcot-Marie-Tooth disease type 2B family. *J. Neurol. Neurosurg. Psychiatr.* 62: 570-573.
2. Maho, A., et al. 1999. Mapping of the CCXCR1, CX3CR1, CCBP2 and CCR9 genes to the CCR cluster within the 3p21.3 region of the human genome. *Cytogenet. Cell Genet.* 87: 265-268.
3. Robinson, P.N. and Godfrey, M. 2000. The molecular genetics of Marfan syndrome and related microfibrilopathies. *J. Med. Genet.* 37: 9-25.
4. Braga, E.A., et al. 2003. New tumor suppressor genes in hot spots of human chromosome 3: new methods of identification. *Mol. Biol.* 37: 194-211.

## CHROMOSOMAL LOCATION

Genetic locus: TADA3 (human) mapping to 3p25.3; Tada3 (mouse) mapping to 6 E3.

## SOURCE

TADA3L (D-10) is a mouse monoclonal antibody raised against amino acids 1-286 mapping at the N-terminus of ADA3 of human origin.

## PRODUCT

Each vial contains 200 µg IgG<sub>1</sub> kappa light chain in 1.0 ml of PBS with < 0.1% sodium azide and 0.1% gelatin.

TADA3L (D-10) is available conjugated to agarose (sc-166118 AC), 500 µg/0.25 ml agarose in 1 ml, for IP; to HRP (sc-166118 HRP), 200 µg/ml, for WB, IHC(P) and ELISA; to either phycoerythrin (sc-166118 PE), fluorescein (sc-166118 FITC), Alexa Fluor® 488 (sc-166118 AF488), Alexa Fluor® 546 (sc-166118 AF546), Alexa Fluor® 594 (sc-166118 AF594) or Alexa Fluor® 647 (sc-166118 AF647), 200 µg/ml, for WB (RGB), IF, IHC(P) and FCM; and to either Alexa Fluor® 680 (sc-166118 AF680) or Alexa Fluor® 790 (sc-166118 AF790), 200 µg/ml, for Near-Infrared (NIR) WB, IF and FCM.

Alexa Fluor® is a trademark of Molecular Probes, Inc., Oregon, USA

## APPLICATIONS

TADA3L (D-10) is recommended for detection of TADA3L of mouse, rat and human origin by Western Blotting (starting dilution 1:100, dilution range 1:100-1:1000), immunoprecipitation [1-2 µg per 100-500 µg of total protein (1 ml of cell lysate)], immunofluorescence (starting dilution 1:50, dilution range 1:50-1:500) and solid phase ELISA (starting dilution 1:30, dilution range 1:30-1:3000).

Suitable for use as control antibody for TADA3L siRNA (h): sc-78466, TADA3L siRNA (m): sc-77411, TADA3L shRNA Plasmid (h): sc-78466-SH, TADA3L shRNA Plasmid (m): sc-77411-SH, TADA3L shRNA (h) Lentiviral Particles: sc-78466-V and TADA3L shRNA (m) Lentiviral Particles: sc-77411-V.

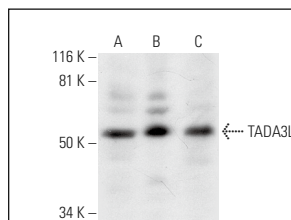
Molecular Weight of ADA3 isoforms: 49/41 kDa.

Positive Controls: HeLa whole cell lysate: sc-2200, NIH/3T3 whole cell lysate: sc-2210 or ADA3 (m4): 293T Lysate: sc-118236.

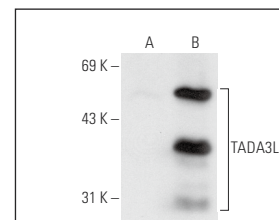
## RECOMMENDED SUPPORT REAGENTS

To ensure optimal results, the following support reagents are recommended: 1) Western Blotting: use m-IgGκ BP-HRP: sc-516102 or m-IgGκ BP-HRP (Cruz Marker): sc-516102-CM (dilution range: 1:1000-1:10000), Cruz Marker™ Molecular Weight Standards: sc-2035, UltraCruz® Blocking Reagent: sc-516214 and Western Blotting Luminol Reagent: sc-2048. 2) Immunoprecipitation: use Protein A/G PLUS-Agarose: sc-2003 (0.5 ml agarose/2.0 ml). 3) Immunofluorescence: use m-IgGκ BP-FITC: sc-516140 or m-IgGκ BP-PE: sc-516141 (dilution range: 1:50-1:200) with UltraCruz® Mounting Medium: sc-24941 or UltraCruz® Hard-set Mounting Medium: sc-359850.

## DATA



TADA3L (D-10): sc-166118. Western blot analysis of TADA3L expression in HeLa (A), NIH/3T3 (B) and OV-90 (C) whole cell lysates.



TADA3L (D-10): sc-166118. Western blot analysis of TADA3L expression in non-transfected: sc-117752 (A) and mouse TADA3L transfected: sc-118236 (B) 293T whole cell lysates.

## STORAGE

Store at 4° C, \*\*DO NOT FREEZE\*\*. Stable for one year from the date of shipment. Non-hazardous. No MSDS required.

## RESEARCH USE

For research use only, not for use in diagnostic procedures.

## PROTOCOLS

See our web site at [www.scbt.com](http://www.scbt.com) for detailed protocols and support products.