

SR-A (C-6): sc-166140

BACKGROUND

The macrophage class A scavenger receptor (SR-A) mediates the uptake of modified low density lipoprotein (LDL). The gene encoding human SR-A maps to chromosome 8 and gives rise to two alternatively spliced isoforms, type I and II (SR-AI and SR-AII), which were originally cloned from the phorbol ester-treated human monocytic cell line THP-1. Both isoforms contain six domains: cytoplasmic (I), membrane-spanning (II), spacer (III), α -helical coiled-coil (IV), collagen-like (V) and a type-specific C-terminal (VI). Domain IV is essential for the trimerization of SR-A, whereas domain V is essential for the wide range of ligand recognition. SR-A is expressed in liver, placenta and brain. Both SR-AI and SR-AII mediate the uptake of LDLs in atherosclerotic lesions. A third isoform, SR-AIII, is unable to uptake LDLs and acts as a dominant negative isoform to possibly protect cells found in advanced atherosclerotic lesions. SR-A plays a role not only in many macrophage-associated pathological processes, including atherosclerosis and Alzheimer's disease, but also in host defense and as an adhesion molecule.

REFERENCES

1. Matsumoto, A., et al. 1990. Human macrophage scavenger receptors: primary structure, expression, and localization in atherosclerotic lesions. *Proc. Natl. Acad. Sci. USA* 87: 9133-9137.
2. Liao, H.S., et al. 1996. Multiple function of macrophage scavenger receptors mediated by fibrous coiled coil domains. *Gerontology* 42: 37-47.
3. Gough, P.J., et al. 1998. A naturally occurring isoform of the human macrophage scavenger receptor (SR-A) gene generated by alternative splicing blocks modified LDL uptake. *J. Lipid Res.* 39: 531-543.
4. Yokota, T., et al. 1998. Scavenger receptors mediate adhesion of activated B lymphocytes. *Exp. Cell Res.* 239: 16-22.
5. Gough, P.J., et al. 1999. Analysis of macrophage scavenger receptor (SR-A) expression in human aortic atherosclerotic lesions. *Arterioscler. Thromb. Vasc. Biol.* 19: 461-471.
6. Hiltunen, T.P., et al. 2001. Rabbit atherosclerotic lesions express scavenger receptor AIII mRNA, a naturally occurring splice variant that encodes a non-functional, dominant negative form of the macrophage scavenger receptor. *Atherosclerosis* 154: 415-419.

CHROMOSOMAL LOCATION

Genetic locus: MSR1 (human) mapping to 8p22.

SOURCE

SR-A (C-6) is a mouse monoclonal antibody raised against amino acids 61-250 of SR-A of human origin.

PRODUCT

Each vial contains 200 μ g IgG_{2b} kappa light chain in 1.0 ml of PBS with < 0.1% sodium azide and 0.1% gelatin.

RESEARCH USE

For research use only, not for use in diagnostic procedures.

APPLICATIONS

SR-A (C-6) is recommended for detection of SR-A of human origin by Western Blotting (starting dilution 1:100, dilution range 1:100-1:1000), immunoprecipitation [1-2 μ g per 100-500 μ g of total protein (1 ml of cell lysate)], immunofluorescence (starting dilution 1:50, dilution range 1:50-1:500) and solid phase ELISA (starting dilution 1:30, dilution range 1:30-1:3000).

Suitable for use as control antibody for SR-A siRNA (h): sc-44116, SR-A shRNA Plasmid (h): sc-44116-SH and SR-A shRNA (h) Lentiviral Particles: sc-44116-V.

Molecular Weight of glycosylated SR-A: 75 kDa.

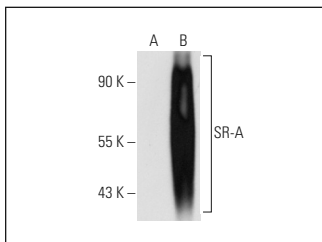
Molecular Weight of SR-A isoforms: 50/40/43 kDa.

Positive Controls: HeLa whole cell lysate: sc-2200, CCRF-CEM cell lysate: sc-2225 or SR-A (h2): 293T Lysate: sc-111501.

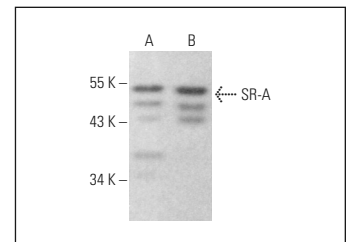
RECOMMENDED SUPPORT REAGENTS

To ensure optimal results, the following support reagents are recommended: 1) Western Blotting: use m-IgG κ BP-HRP: sc-516102 or m-IgG κ BP-HRP (Cruz Marker): sc-516102-CM (dilution range: 1:1000-1:10000), Cruz Marker™ Molecular Weight Standards: sc-2035, UltraCruz® Blocking Reagent: sc-516214 and Western Blotting Luminol Reagent: sc-2048. 2) Immunoprecipitation: use Protein A/G PLUS-Agarose: sc-2003 (0.5 ml agarose/2.0 ml). 3) Immunofluorescence: use m-IgG κ BP-FITC: sc-516140 or m-IgG κ BP-PE: sc-516141 (dilution range: 1:50-1:200) with UltraCruz® Mounting Medium: sc-24941 or UltraCruz® Hard-set Mounting Medium: sc-359850.

DATA



SR-A (C-6): sc-166140. Western blot analysis of SR-A expression in non-transfected: sc-117752 (A) and human SR-A transfected: sc-111501 (B) 293T whole cell lysates.



SR-A (C-6): sc-166140. Western blot analysis of SR-A expression in HeLa (A) and CCRF-CEM (B) whole cell lysates.

STORAGE

Store at 4° C, **DO NOT FREEZE**. Stable for one year from the date of shipment. Non-hazardous. No MSDS required.



See **SR-A (E-5): sc-166184** for SR-A antibody conjugates, including AC, HRP, FITC, PE, and Alexa Fluor® 488, 546, 594, 647, 680 and 790.