

Ini1 (F-4): sc-166164

BACKGROUND

The SWI-SNF complex is involved in the activation of transcription via the remodeling of nucleosome structure in an ATP-dependent manner. Brm (also designated SNF2 α) and Brg-1 (also designated SNF2 β) are the ATPase subunits of the mammalian SWI-SNF complex. Brm, Brg-1, Ini1 (integrator interactor 1, also designated SNF5), BAF155 (also designated SRG3) and BAF170 are thought to comprise the functional core of the SWI-SNF complex. Addition of Ini1, BAF155 and BAF170 to Brg-1 appears to increase remodeling activity. Other complex subunits are thought to play regulatory roles. hSNF2L and hSNF2H both appear to be homologs of *Drosophila* ISWI, a Brm related ATPase that is present in chromatin remodeling complexes other than SWI/SNF, including the NURF (nucleosome remodeling factor).

CHROMOSOMAL LOCATION

Genetic locus: SMARCB1 (human) mapping to 22q11.23; Smarcb1 (mouse) mapping to 10 C1.

SOURCE

Ini1 (F-4) is a mouse monoclonal antibody raised against amino acids 1-300 of Ini1 of human origin.

PRODUCT

Each vial contains 200 μ g IgG_{2a} kappa light chain in 1.0 ml of PBS with < 0.1% sodium azide and 0.1% gelatin. Also available as TransCruz reagent for Gel Supershift and ChIP applications, sc-166164 X, 200 μ g/0.1 ml.

STORAGE

Store at 4° C, **DO NOT FREEZE**. Stable for one year from the date of shipment. Non-hazardous. No MSDS required.

APPLICATIONS

Ini1 (F-4) is recommended for detection of Ini1 of mouse, rat and human origin by Western Blotting (starting dilution 1:100, dilution range 1:100-1:1000), immunoprecipitation [1-2 μ g per 100-500 μ g of total protein (1 ml of cell lysate)], immunofluorescence (starting dilution 1:50, dilution range 1:50-1:500), immunohistochemistry (including paraffin-embedded sections) (starting dilution 1:50, dilution range 1:50-1:500) and solid phase ELISA (starting dilution 1:30, dilution range 1:30-1:3000).

Suitable for use as control antibody for Ini1 siRNA (h): sc-35668, Ini1 siRNA (m): sc-35670, Ini1 shRNA Plasmid (h): sc-35668-SH, Ini1 shRNA Plasmid (m): sc-35670-SH, Ini1 shRNA (h) Lentiviral Particles: sc-35668-V and Ini1 shRNA (m) Lentiviral Particles: sc-35670-V.

Ini1 (F-4) X TransCruz antibody is recommended for Gel Supershift and ChIP applications.

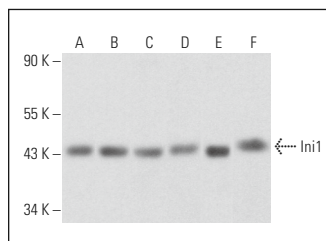
Molecular Weight of Ini1: 47 kDa.

Positive Controls: HeLa nuclear extract: sc-2120, Jurkat whole cell lysate: sc-2204 or K-562 whole cell lysate: sc-2203.

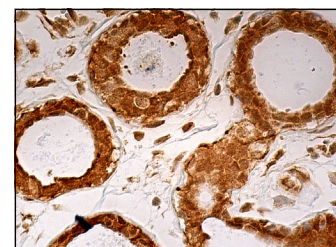
RECOMMENDED SUPPORT REAGENTS

To ensure optimal results, the following support reagents are recommended: 1) Western Blotting: use m-IgG κ BP-HRP: sc-516102 or m-IgG κ BP-HRP (Cruz Marker): sc-516102-CM (dilution range: 1:1000-1:10000), Cruz Marker™ Molecular Weight Standards: sc-2035, UltraCruz® Blocking Reagent: sc-516214 and Western Blotting Luminol Reagent: sc-2048. 2) Immunoprecipitation: use Protein A/G PLUS-Agarose: sc-2003 (0.5 ml agarose/2.0 ml). 3) Immunofluorescence: use m-IgG κ BP-FITC: sc-516140 or m-IgG κ BP-PE: sc-516141 (dilution range: 1:50-1:200) with UltraCruz® Mounting Medium: sc-24941 or UltraCruz® Hard-set Mounting Medium: sc-359850. 4) Immunohistochemistry: use m-IgG κ BP-HRP: sc-516102 with DAB, 50X: sc-24982 and Immunohistomount: sc-45086, or Organo/Limonene Mount: sc-45087.

DATA



Ini1 (F-4): sc-166164. Western blot analysis of Ini1 expression in Jurkat (A), K-562 (B), RAW 264.7 (C) and PC-12 (D) whole cell lysates and K-562 (E) and HeLa (F) nuclear extracts.



Ini1 (F-4): sc-166164. Immunoperoxidase staining of formalin fixed, paraffin-embedded human breast tissue showing nuclear and cytoplasmic staining of glandular cells.

SELECT PRODUCT CITATIONS

- Shi, H., et al. 2020. ARID1A loss in neuroblastoma promotes the adrenergic-to-mesenchymal transition by regulating enhancer-mediated gene expression. *Sci. Adv.* 6: eaaz3440.

RESEARCH USE

For research use only, not for use in diagnostic procedures.

PROTOCOLS

See our web site at www.scbt.com for detailed protocols and support products.



See **Ini1 (A-5): sc-166165** for Ini1 antibody conjugates, including AC, HRP, FITC, PE, and Alexa Fluor® 488, 546, 594, 647, 680 and 790.