

cathepsin E (C-11): sc-166286

BACKGROUND

The cathepsin family of proteolytic enzymes contains several diverse classes of proteases. The cysteine protease class comprises cathepsins B, L, H, K, S and O. The aspartyl protease class is composed of cathepsins D and E. Cathepsin G is in the serine protease class. Most cathepsins are lysosomal and each is involved in cellular metabolism, participating in various events such as peptide biosynthesis and protein degradation. Cathepsin E is a nonlysosomal, intracellular proteinase.

REFERENCES

1. Ishidoh, K., et al. 1987. Molecular cloning and sequencing of cDNA for rat cathepsin L. *FEBS Lett.* 223: 69-73.
2. Ishidoh, K., et al. 1987. Molecular cloning and sequencing of cDNA for rat cathepsin H. Homology in pro-peptide regions of cysteine proteases. *FEBS Lett.* 226: 33-37.
3. Redecker, B., et al. 1991. Molecular organization of the human cathepsin D gene. *DNA Cell Biol.* 10: 423-431.
4. Shi, G.P., et al. 1992. Molecular cloning and expression of human alveolar macrophage cathepsin S, an elastinolytic cysteine protease. *J. Biol. Chem.* 267: 7258-7262.
5. Heusel, J.W., et al. 1993. Molecular cloning, chromosomal location, and tissue-specific expression of the murine cathepsin G gene. *Blood* 81: 1614-1623.
6. Guenette, R.S., et al. 1994. Cathepsin B, a cysteine protease implicated in metastatic progression, is also expressed during regression of the rat prostate and mammary glands. *Eur. J. Biochem.* 226: 311-321.
7. Shi, G.P., et al. 1995. Molecular cloning of human cathepsin O, a novel endoproteinase and homologue of rabbit OC2. *FEBS Lett.* 357: 129-134.
8. Okamoto, K., et al. 1995. Isolation and sequencing of two cDNA clones encoding rat spleen cathepsin E and analysis of the activation of purified procathepsin E. *Arch. Biochem. Biophys.* 322: 103-111.
9. Rantakokko, J., et al. 1996. Mouse cathepsin K: cDNA cloning and predominant expression of the gene in osteoclasts, and in some hypertrophying chondrocytes during mouse development. *FEBS Lett.* 393: 307-313.

CHROMOSOMAL LOCATION

Genetic locus: CTSE (human) mapping to 1q32.1; Ctse (mouse) mapping to 1 E4.

SOURCE

cathepsin E (C-11) is a mouse monoclonal antibody raised against amino acids 141-180 mapping within an internal region of cathepsin E of human origin.

PRODUCT

Each vial contains 200 µg IgG_{2b} kappa light chain in 1.0 ml of PBS with < 0.1% sodium azide and 0.1% gelatin.

APPLICATIONS

cathepsin E (C-11) is recommended for detection of cathepsin E of mouse, rat and human origin by Western Blotting (starting dilution 1:100, dilution range 1:100-1:1000), immunoprecipitation [1-2 µg per 100-500 µg of total protein (1 ml of cell lysate)], immunofluorescence (starting dilution 1:50, dilution range 1:50-1:500), immunohistochemistry (including paraffin-embedded sections) (starting dilution 1:50, dilution range 1:50-1:500) and solid phase ELISA (starting dilution 1:30, dilution range 1:30-1:3000).

Suitable for use as control antibody for cathepsin E siRNA (h): sc-41473, cathepsin E siRNA (m): sc-41474, cathepsin E shRNA Plasmid (h): sc-41473-SH, cathepsin E shRNA Plasmid (m): sc-41474-SH, cathepsin E shRNA (h) Lentiviral Particles: sc-41473-V and cathepsin E shRNA (m) Lentiviral Particles: sc-41474-V.

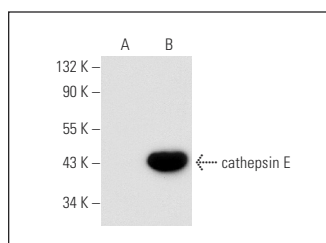
Molecular Weight of cathepsin E: 48 kDa.

Positive Controls: cathepsin E (h): 293T Lysate: sc-115648.

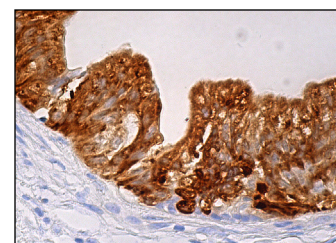
RECOMMENDED SUPPORT REAGENTS

To ensure optimal results, the following support reagents are recommended: 1) Western Blotting: use m-IgGκ BP-HRP: sc-516102 or m-IgGκ BP-HRP (Cruz Marker): sc-516102-CM (dilution range: 1:1000-1:10000), Cruz Marker™ Molecular Weight Standards: sc-2035, UltraCruz® Blocking Reagent: sc-516214 and Western Blotting Luminol Reagent: sc-2048. 2) Immunoprecipitation: use Protein A/G PLUS-Agarose: sc-2003 (0.5 ml agarose/2.0 ml). 3) Immunofluorescence: use m-IgGκ BP-FITC: sc-516140 or m-IgGκ BP-PE: sc-516141 (dilution range: 1:50-1:200) with UltraCruz® Mounting Medium: sc-24941 or UltraCruz® Hard-set Mounting Medium: sc-359850. 4) Immunohistochemistry: use m-IgGκ BP-HRP: sc-516102 with DAB, 50X: sc-24982 and Immunohistomount: sc-45086, or Organo/Limonene Mount: sc-45087.

DATA



cathepsin E (C-11): sc-166286. Western blot analysis of cathepsin E expression in non-transfected: sc-117752 (A) and human cathepsin E transfected: sc-115648 (B) 293T whole cell lysates.



cathepsin E (C-11): sc-166286. Immunoperoxidase staining of formalin fixed, paraffin-embedded human gall bladder tissue showing cytoplasmic staining of glandular cells.

STORAGE

Store at 4° C, **DO NOT FREEZE**. Stable for one year from the date of shipment. Non-hazardous. No MSDS required.

RESEARCH USE

For research use only, not for use in diagnostic procedures.