

TRIP6 (D-11): sc-166311



The Power to Question

BACKGROUND

Zyxin is a LIM domain-containing, zinc finger domain-containing, SH3 ligand-containing phosphoprotein that localizes to focal adhesion plaques and Actin filament bundles. Thyroid receptor interacting protein 6 (TRIP6) is a Zyxin-related protein. TRIP6 interacts with the ligand binding domain of the thyroid receptor and is predominantly expressed in kidney, liver and lung. It interacts with receptor-interacting protein 2 (RIP2) through LIM domains in a TNF- or IL-1-dependent manner. TRIP6 also interacts with TRAF2, a protein that is crucially involved in TNF signaling, as well as the IL-1 receptor, TLR2 and Nod1. Overexpression of TRIP6 facilitates NF κ B activation by TNF, IL-1, TLR2 or Nod1, whereas a dominant negative mutant or RNA-interference construct of TRIP6 inhibits NF κ B activation by TNF, IL-1, TLR2 or Nod1. Moreover, TRIP6 also potentiates RIP2- and Nod1-mediated ERK activation.

REFERENCES

- Xu, J., Lai, Y.J., Lin, W.C. and Lin, F.T. 2004. TRIP6 enhances lysophosphatidic acid-induced cell migration by interacting with the lysophosphatidic acid 2 receptor. *J. Biol. Chem.* 279: 10459-10468.
- Lai, Y.J., Chen, C.S., Lin, W.C. and Lin, F.T. 2005. c-Src-mediated phosphorylation of TRIP6 regulates its function in lysophosphatidic acid-induced cell migration. *Mol. Cell. Biol.* 25: 5859-5868.
- Li, L., Bin, L.H., Li, F., Liu, Y., Chen, D., Zhai, Z. and Shu, H.B. 2005. TRIP6 is a RIP2-associated common signaling component of multiple NF κ B activation pathways. *J. Cell Sci.* 118: 555-563.
- Petit, M.M., Crombez, K.R., Vervenne, H.B., Weyns, N. and Van de Ven, W.J. 2005. The tumor suppressor Scrib selectively interacts with specific members of the Zyxin family of proteins. *FEBS Lett.* 579: 5061-5068.
- Gur'ianova, O.A., Sablina, A.A., Chumakov, P.M. and Frolova, E.I. 2005. Downregulation of TRIP6 expression induces Actin cytoskeleton rearrangements in human carcinoma cell lines. *Mol. Biol.* 39: 905-909.

CHROMOSOMAL LOCATION

Genetic locus: TRIP6 (human) mapping to 7q22.1; Trip6 (mouse) mapping to 5 G2.

SOURCE

TRIP6 (D-11) is a mouse monoclonal antibody specific for an epitope mapping between amino acids 32-61 near the N-terminus of TRIP6 of human origin.

PRODUCT

Each vial contains 200 μ g IgG₃ lambda light chain in 1.0 ml of PBS with < 0.1% sodium azide and 0.1% gelatin.

Blocking peptide available for competition studies, sc-166311 P, (100 μ g peptide in 0.5 ml PBS containing < 0.1% sodium azide and 0.2% stabilizer protein).

STORAGE

Store at 4° C, ****DO NOT FREEZE****. Stable for one year from the date of shipment. Non-hazardous. No MSDS required.

APPLICATIONS

TRIP6 (D-11) is recommended for detection of TRIP6 of mouse, rat and human origin by Western Blotting (starting dilution 1:100, dilution range 1:100-1:1000), immunoprecipitation [1-2 μ g per 100-500 μ g of total protein (1 ml of cell lysate)], immunofluorescence (starting dilution 1:50, dilution range 1:50-1:500) and solid phase ELISA (starting dilution 1:30, dilution range 1:30-1:3000).

Suitable for use as control antibody for TRIP6 siRNA (h): sc-45561, TRIP6 siRNA (m): sc-45562, TRIP6 shRNA Plasmid (h): sc-45561-SH, TRIP6 shRNA Plasmid (m): sc-45562-SH, TRIP6 shRNA (h) Lentiviral Particles: sc-45561-V and TRIP6 shRNA (m) Lentiviral Particles: sc-45562-V.

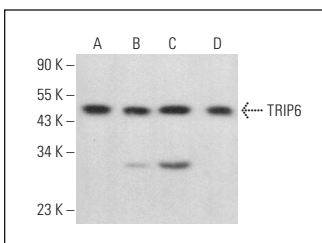
Molecular Weight of TRIP6: 50 kDa.

Positive Controls: TRIP6 (h): 293T Lysate: sc-114028, A-10 cell lysate: sc-3806 or A2058 whole cell lysate: sc-364178.

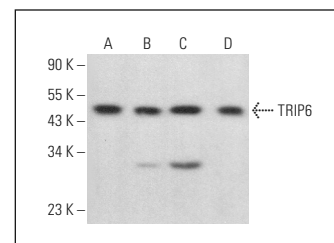
RECOMMENDED SUPPORT REAGENTS

To ensure optimal results, the following support reagents are recommended: 1) Western Blotting: use m-IgG λ BP-HRP: sc-516132 or m-IgG λ BP-HRP (Cruz Marker): sc-516132-CM (dilution range: 1:1000-1:10000), Cruz Marker™ Molecular Weight Standards: sc-2035, UltraCruz® Blocking Reagent: sc-516214 and Western Blotting Luminol Reagent: sc-2048. 2) Immunoprecipitation: use Protein A/G PLUS-Agarose: sc-2003 (0.5 ml agarose/2.0 ml). 3) Immunofluorescence: use m-IgG λ BP-FITC: sc-516185 or m-IgG λ BP-PE: sc-516186 (dilution range: 1:50-1:200) with UltraCruz® Mounting Medium: sc-24941 or UltraCruz® Hard-set Mounting Medium: sc-359850.

DATA



TRIP6 (D-11): sc-166311. Western blot analysis of TRIP6 expression in A-10 (A), A2058 (B), SJRH30 (C) and Sol8 (D) whole cell lysates.



TRIP6 (D-11): sc-166311. Western blot analysis of TRIP6 expression in A-10 (A), A2058 (B), SJRH30 (C) and Sol8 (D) whole cell lysates.

RESEARCH USE

For research use only, not for use in diagnostic procedures.

PROTOCOLS

See our web site at www.scbt.com for detailed protocols and support products.