

LARG (H-3): sc-166318

BACKGROUND

Leukemia-associated RhoGEF (LARG) is a 1,544 amino acid, guanine nucleotide exchange factor (GEF) that contains a PDZ domain, a LH/RGS domain and a Dbl homology/pleckstrin homology domain. LARG shares homology with other RhoGEFs, including such oncogenes as DBL, VAV1, TIAM and BCR. RhoGEFs containing RGS domains are capable of associating with activated G α subunits and can function as GTPase activating proteins (GAPs). LARG transcripts have been detected in human peripheral blood leukocytes, spleen, prostate, testis, ovary, small intestine, colon and thymus. The LARG protein may elicit signals through a G protein-coupled receptor (GPCR)-Rho-dependent signaling pathway. Genetic alterations that occur at human chromosome position 11q23.3, where LARG maps, are prevalent in acute leukemias.

REFERENCES

- Nagase, T., Ishikawa, K., Nakajima, D., Ohira, M., Seki, N., Miyajima, N., Tanaka, A., Kotani, H., Nomura, N. and Ohara, O. 1997. Prediction of the coding sequences of unidentified human genes. VII. The complete sequences of 100 new cDNA clones from brain which can code for large proteins *in vitro*. DNA Res. 4: 141-150.
- Kourlas, P.J., Strout, M.P., Becknell, B., Veronese, M.L., Croce, C.M., Theil, K.S., Krahe, R., Ruutu, T., Knuutila, S., Bloomfield, C.D. and Caligiuri, M.A. 2000. Identification of a gene at 11q23 encoding a guanine nucleotide exchange factor: evidence for its fusion with MLL in acute Myeloid leukemia. Proc. Natl. Acad. Sci. USA 97: 2145-2150.
- Fukuhara, S., Chikumi, H. and Gutkind, J.S. 2000. Leukemia-associated Rho guanine nucleotide exchange factor (LARG) links heterotrimeric G proteins of the G $_{12}$ family to Rho. FEBS Lett. 485: 183-188.
- Online Mendelian Inheritance in Man, OMIM™. 2000. Johns Hopkins University, Baltimore, MD. MIM Number: 604763. World Wide Web URL: <http://www.ncbi.nlm.nih.gov/omim/>
- Kozasa, T. 2001. Regulation of G protein-mediated signal transduction by RGS proteins. Life Sci. 68: 2309-2317.

CHROMOSOMAL LOCATION

Genetic locus: ARHGEF12 (human) mapping to 11q23.3; Arhgef12 (mouse) mapping to 9 A5.1.

SOURCE

LARG (H-3) is a mouse monoclonal antibody raised against amino acids 1-70 of LARG of human origin.

PRODUCT

Each vial contains 200 μ g IgM kappa light chain in 1.0 ml of PBS with < 0.1% sodium azide and 0.1% gelatin.

STORAGE

Store at 4° C, ****DO NOT FREEZE****. Stable for one year from the date of shipment. Non-hazardous. No MSDS required.

APPLICATIONS

LARG (H-3) is recommended for detection of LARG of mouse, rat and human origin by Western Blotting (starting dilution 1:100, dilution range 1:100-1:1000), immunoprecipitation [1-2 μ g per 100-500 μ g of total protein (1 ml of cell lysate)], immunofluorescence (starting dilution 1:50, dilution range 1:50-1:500), immunohistochemistry (including paraffin-embedded sections) (starting dilution 1:50, dilution range 1:50-1:500) and solid phase ELISA (starting dilution 1:30, dilution range 1:30-1:3000).

Suitable for use as control antibody for LARG siRNA (h): sc-41800, LARG siRNA (m): sc-41801, LARG shRNA Plasmid (h): sc-41800-SH, LARG shRNA Plasmid (m): sc-41801-SH, LARG shRNA (h) Lentiviral Particles: sc-41800-V and LARG shRNA (m) Lentiviral Particles: sc-41801-V.

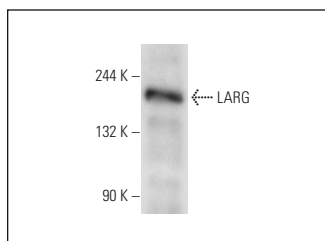
Molecular Weight of LARG: 220 kDa.

Positive Controls: HeLa whole cell lysate: sc-2200 or HL-60 whole cell lysate: sc-2209.

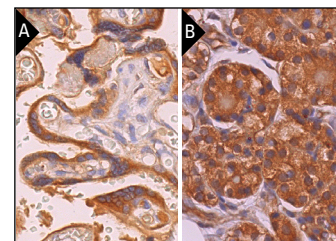
RECOMMENDED SUPPORT REAGENTS

To ensure optimal results, the following support reagents are recommended: 1) Western Blotting: use m-IgG κ BP-HRP: sc-516102 or m-IgG κ BP-HRP (Cruz Marker): sc-516102-CM (dilution range: 1:1000-1:10000), Cruz Marker™ Molecular Weight Standards: sc-2035, UltraCruz® Blocking Reagent: sc-516214 and Western Blotting Luminol Reagent: sc-2048. 2) Immunoprecipitation: use Protein L-Agarose: sc-2336 (0.5 ml agarose/2.0 ml). 3) Immunofluorescence: use m-IgG κ BP-FITC: sc-516140 or m-IgG κ BP-PE: sc-516141 (dilution range: 1:50-1:200) with UltraCruz® Mounting Medium: sc-24941 or UltraCruz® Hard-set Mounting Medium: sc-359850. 4) Immunohistochemistry: use m-IgG κ BP-HRP: sc-516102 with DAB, 50X: sc-24982 and Immunohisto-mount: sc-45086, or Organo/Limonene Mount: sc-45087.

DATA



LARG (H-3): sc-166318. Western blot analysis of LARG expression in HL-60 whole cell lysate.



LARG (H-3): sc-166318. Immunoperoxidase staining of formalin fixed, paraffin-embedded human placenta tissue showing cytoplasmic staining of trophoblastic cells (A). Immunoperoxidase staining of formalin fixed, paraffin-embedded human parathyroid tissue showing cytoplasmic staining of glandular cells (B).

RESEARCH USE

For research use only, not for use in diagnostic procedures.

PROTOCOLS

See our web site at www.scbt.com for detailed protocols and support products.