

PRAME (D-12): sc-166480

BACKGROUND

Several tumor-associated antigen families, such as MAGE, GAGE, PRAME and BAGE, are of particular interest in tumor immunology because their expression, with exception of testis and fetal tissues, seems to be restricted to tumor cells. The MAGE, BAGE and GAGE genes code for distinct antigens that are recognized by autologous cytolytic T lymphocytes. Many of these antigens represent suitable targets for tumor immunotherapy, since their expression in human melanoma cells is common and highly specific. PRAME (preferentially expressed antigen of melanoma) is a melanoma antigen recognized by cytotoxic T cells (CTLs) and is expressed in a variety of cancer cells, including leukemic cells. The PRAME gene is expressed at a high level in a very large fraction of tumors, such as melanomas, non small-cell lung carcinomas, sarcomas, head and neck tumors and renal carcinomas. Therefore, PRAME is a candidate for tumor immunotherapy, even though it is expressed at low levels in certain normal tissues.

REFERENCES

1. Li, J., et al. 1996. Expression of BAGE, GAGE, and MAGE genes in human gastric carcinoma. *Clin. Cancer Res.* 2: 1619-1625.
2. Dalerba, P., et al. 1998. High homogeneity of MAGE, BAGE, GAGE, tyrosinase and Melan-A/MART-1 gene expression in clusters of multiple simultaneous metastases of human melanoma: implications for protocol design of therapeutic antigen-specific vaccination strategies. *Int. J. Cancer* 77: 200-204.
3. van Baren, N., et al. 1998. PRAME, a gene encoding an antigen recognized on a human melanoma by cytolytic T cells, is expressed in acute leukaemia cells. *Br. J. Haematol.* 102: 1376-1379.
4. Pold, M., et al. 1999. Identification of a new, unorthodox member of the MAGE gene family. *Genomics* 59: 161-167.

CHROMOSOMAL LOCATION

Genetic locus: PRAME (human) mapping to 22q11.22.

SOURCE

PRAME (D-12) is a mouse monoclonal antibody raised against amino acids 126-205 mapping within an internal region of PRAME of human origin.

PRODUCT

Each vial contains 200 µg IgG_{2a} kappa light chain in 1.0 ml of PBS with < 0.1% sodium azide and 0.1% gelatin.

PRAME (D-12) is available conjugated to agarose (sc-166480 AC), 500 µg/0.25 ml agarose in 1 ml, for IP; to HRP (sc-166480 HRP), 200 µg/ml, for WB, IHC(P) and ELISA; to either phycoerythrin (sc-166480 PE), fluorescein (sc-166480 FITC), Alexa Fluor® 488 (sc-166480 AF488), Alexa Fluor® 546 (sc-166480 AF546), Alexa Fluor® 594 (sc-166480 AF594) or Alexa Fluor® 647 (sc-166480 AF647), 200 µg/ml, for WB (RGB), IF, IHC(P) and FCM; and to either Alexa Fluor® 680 (sc-166480 AF680) or Alexa Fluor® 790 (sc-166480 AF790), 200 µg/ml, for Near-Infrared (NIR) WB, IF and FCM.

Alexa Fluor® is a trademark of Molecular Probes, Inc., Oregon, USA

APPLICATIONS

PRAME (D-12) is recommended for detection of PRAME of human origin by Western Blotting (starting dilution 1:100, dilution range 1:100-1:1000), immunoprecipitation [1-2 µg per 100-500 µg of total protein (1 ml of cell lysate)], immunofluorescence (starting dilution 1:50, dilution range 1:50-1:500) and solid phase ELISA (starting dilution 1:30, dilution range 1:30-1:3000).

Suitable for use as control antibody for PRAME siRNA (h): sc-37322, PRAME shRNA Plasmid (h): sc-37322-SH and PRAME shRNA (h) Lentiviral Particles: sc-37322-V.

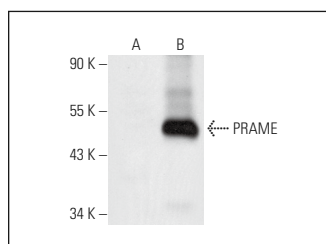
Molecular Weight of PRAME: 58 kDa.

Positive Controls: PRAME (h): 293T Lysate; sc-115478.

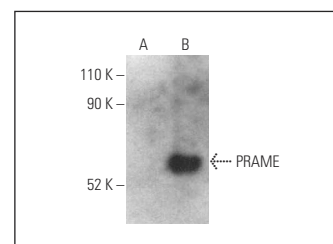
RECOMMENDED SUPPORT REAGENTS

To ensure optimal results, the following support reagents are recommended: 1) Western Blotting: use m-IgGκ BP-HRP: sc-516102 or m-IgGκ BP-HRP (Cruz Marker): sc-516102-CM (dilution range: 1:1000-1:10000), Cruz Marker™ Molecular Weight Standards: sc-2035, UltraCruz® Blocking Reagent: sc-516214 and Western Blotting Luminol Reagent: sc-2048. 2) Immunoprecipitation: use Protein A/G PLUS-Agarose: sc-2003 (0.5 ml agarose/2.0 ml). 3) Immunofluorescence: use m-IgGκ BP-FITC: sc-516140 or m-IgGκ BP-PE: sc-516141 (dilution range: 1:50-1:200) with UltraCruz® Mounting Medium: sc-24941 or UltraCruz® Hard-set Mounting Medium: sc-359850.

DATA



PRAME (D-12): sc-166480. Western blot analysis of PRAME expression in non-transfected: sc-117752 (A) and human PRAME transfected: sc-115478 (B) 293T whole cell lysates.



PRAME (D-12) HRP: sc-166480 HRP. Direct western blot analysis of PRAME expression in non-transfected: sc-117752 (A) and human PRAME transfected: sc-115478 (B) 293T whole cell lysates.

STORAGE

Store at 4° C, **DO NOT FREEZE**. Stable for one year from the date of shipment. Non-hazardous. No MSDS required.

RESEARCH USE

For research use only, not for use in diagnostic procedures.

PROTOCOLS

See our web site at www.scbt.com for detailed protocols and support products.