

# CD300LG (D-14): sc-167435

## BACKGROUND

CD300LG (CD300 antigen-like family member G), also known as CLM9 (CMRF35-like molecule 9) or TREM4 (triggering receptor expressed on myeloid cells 4), is a 332 amino acid single-pass type I membrane protein that belongs to the CD300 family and exists as 3 alternatively spliced isoforms. CD300LG contains one Ig-like V-type (immunoglobulin-like) domain, which mediates binding to lymphocytes. As a receptor which could act to mediate L-selectin-dependent lymphocyte rollings, CD300LG is highly expressed in heart, skeletal muscle and placenta. The gene that encodes CD300LG consists of approximately 16,482 bases and maps to human chromosome 17q21.31. Comprising over 2.5% of the human genome, chromosome 17 consists of about 81 million bases, encodes over 1,200 genes and has the highest gene density in the genome. Chromosome 17 is also enriched in segmental duplications, ranking third in density among the autosomes.

## REFERENCES

- Hall, J.M., et al. 1992. Closing in on a breast cancer gene on chromosome 17q. *Am. J. Hum. Genet.* 50: 1235-1242.
- Evans, S.C. and Lozano, G. 1997. The Li-Fraumeni syndrome: an inherited susceptibility to cancer. *Mol. Med. Today* 3: 390-395.
- Kersemaekers, A.M., et al. 1998. Loss of heterozygosity for defined regions on chromosomes 3, 11 and 17 in carcinomas of the uterine cervix. *Br. J. Cancer* 77: 192-200.
- Piura, B., et al. 2001. Three primary malignancies related to BRCA mutation successively occurring in a BRCA1 185delAG mutation carrier. *Eur. J. Obstet. Gynecol. Reprod. Biol.* 97: 241-244.
- Takatsu, H., et al. 2006. CD300 antigen like family member G: A novel Ig receptor like protein exclusively expressed on capillary endothelium. *Biochem. Biophys. Res. Commun.* 348: 183-191.
- Umemoto, E., et al. 2006. Nepmucin, a novel HEV sialomucin, mediates L-selectin-dependent lymphocyte rolling and promotes lymphocyte adhesion under flow. *J. Exp. Med.* 203: 1603-1614.
- Online Mendelian Inheritance in Man, OMIM™. 2006. Johns Hopkins University, Baltimore, MD. MIM Number: 610520. World Wide Web URL: <http://www.ncbi.nlm.nih.gov/omim/>

## CHROMOSOMAL LOCATION

Genetic locus: Cd300lg (mouse) mapping to 11 D.

## SOURCE

CD300LG (D-14) is an affinity purified goat polyclonal antibody raised against a peptide mapping within an extracellular domain of CD300LG of mouse origin.

## PRODUCT

Each vial contains 200 µg IgG in 1.0 ml of PBS with < 0.1% sodium azide and 0.1% gelatin.

Blocking peptide available for competition studies, sc-167435 P, (100 µg peptide in 0.5 ml PBS containing < 0.1% sodium azide and 0.2% BSA).

## APPLICATIONS

CD300LG (D-14) is recommended for detection of CD300LG of mouse and rat origin by Western Blotting (starting dilution 1:200, dilution range 1:100-1:1000), immunoprecipitation [1-2 µg per 100-500 µg of total protein (1 ml of cell lysate)], immunofluorescence (starting dilution 1:50, dilution range 1:50-1:500) and solid phase ELISA (starting dilution 1:30, dilution range 1:30-1:3000); non cross-reactive with other CD300 family members.

Suitable for use as control antibody for CD300LG siRNA (m): sc-142195, CD300LG shRNA Plasmid (m): sc-142195-SH and CD300LG shRNA (m) Lentiviral Particles: sc-142195-V.

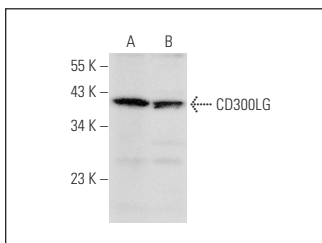
Molecular Weight of CD300LG isoforms: 36/26/25 kDa.

Positive Controls: mouse kidney extract: sc-2255.

## RECOMMENDED SECONDARY REAGENTS

To ensure optimal results, the following support (secondary) reagents are recommended: 1) Western Blotting: use donkey anti-goat IgG-HRP: sc-2020 (dilution range: 1:2000-1:100,000) or Cruz Marker™ compatible donkey anti-goat IgG-HRP: sc-2033 (dilution range: 1:2000-1:5000), Cruz Marker™ Molecular Weight Standards: sc-2035, TBS Blotto A Blocking Reagent: sc-2333 and Western Blotting Luminol Reagent: sc-2048. 2) Immunoprecipitation: use Protein A/G PLUS-Agarose: sc-2003 (0.5 ml agarose/2.0 ml). 3) Immunofluorescence: use donkey anti-goat IgG-FITC: sc-2024 (dilution range: 1:100-1:400) or donkey anti-goat IgG-TR: sc-2783 (dilution range: 1:100-1:400) with UltraCruz™ Mounting Medium: sc-24941.

## DATA



CD300LG (D-14): sc-167435. Western blot analysis of CD300LG expression in mouse kidney tissue extract (A) and THP-1 whole cell lysate (B).

## STORAGE

Store at 4° C, \*\*DO NOT FREEZE\*\*. Stable for one year from the date of shipment. Non-hazardous. No MSDS required.

## RESEARCH USE

For research use only, not for use in diagnostic procedures.

## PROTOCOLS

See our web site at [www.scbt.com](http://www.scbt.com) or our catalog for detailed protocols and support products.