

DYNC2L1 (D-13): sc-167703

BACKGROUND

Dyneins are multisubunit, high molecular weight ATPases that interact with microtubules to generate force by converting the chemical energy of ATP into the mechanical energy of movement. Cytoplasmic Dynein is an approximately 12 subunit complex of 2 heavy chains, 2 intermediate chains to anchor Dynein to its cargo, 4 smaller intermediate chains and several light chains. Cytoplasmic Dynein performs functions necessary for cell survival such as organelle transport and centrosome assembly. DYNC2L1 (dynein, cytoplasmic 2, light intermediate chain 1), also known as LIC3, D2LIC or CGI-60, is a 351 amino acid cytoplasmic protein belonging to the dynein light intermediate chain family. DYNC2L1 may function as a motor for intraflagellar retrograde transport and in cilia biogenesis. The cytoplasmic dynein complex 2 may be composed of a DYNC2H1 homodimer and a number of DYNC2L1 light intermediate chains. DYNC2L1 exists as five alternatively spliced isoforms.

REFERENCES

1. Grissom, P.M., et al. 2002. Identification of a novel light intermediate chain (D2LIC) for mammalian cytoplasmic dynein 2. *Mol. Biol. Cell* 13: 817-829.
2. Malikov, V., et al. 2004. Cytoplasmic dynein nucleates microtubules to organize them into radial arrays *in vivo*. *Mol. Biol. Cell* 15: 2742-2749.
3. Mallik, R., et al. 2004. Cytoplasmic dynein functions as a gear in response to load. *Nature* 427: 649-652.
4. Seetharam, R.N., et al. 2005. High speed sliding of axonemal microtubules produced by outer arm dynein. *Cell Motil. Cytoskeleton* 60: 96-103.
5. McGrath, J.L. 2005. Dynein motility: four heads are better than two. *Curr. Biol.* 15: R970-R972.
6. Lee, W.L., et al. 2005. The offloading model for dynein function: differential function of motor subunits. *J. Cell Biol.* 168: 201-207.
7. He, Y., et al. 2005. Role of cytoplasmic dynein in the axonal transport of microtubules and neurofilaments. *J. Cell Biol.* 168: 697-703.
8. Pfister, K.K., et al. 2005. Cytoplasmic dynein nomenclature. *J. Cell Biol.* 171: 411-413.
9. Pfister, K.K., et al. 2006. Genetic analysis of the cytoplasmic dynein subunit families. *PLoS Genet.* 2: e1.

CHROMOSOMAL LOCATION

Genetic locus: DYNC2L1 (human) mapping to 2p21; Dync2l1 (mouse) mapping to 17 E4.

SOURCE

DYNC2L1 (D-13) is an affinity purified goat polyclonal antibody raised against a peptide mapping within a cytoplasmic domain of DYNC2L1 of human origin.

PRODUCT

Each vial contains 200 µg IgG in 1.0 ml of PBS with < 0.1% sodium azide and 0.1% gelatin.

Blocking peptide available for competition studies, sc-167703 P, (100 µg peptide in 0.5 ml PBS containing < 0.1% sodium azide and 0.2% BSA).

APPLICATIONS

DYNC2L1 (D-13) is recommended for detection of DYNC2L1 of mouse, rat and human origin by Western Blotting (starting dilution 1:200, dilution range 1:100-1:1000), immunoprecipitation [1-2 µg per 100-500 µg of total protein (1 ml of cell lysate)], immunofluorescence (starting dilution 1:50, dilution range 1:50-1:500) and solid phase ELISA (starting dilution 1:30, dilution range 1:30-1:3000).

Suitable for use as control antibody for DYNC2L1 siRNA (h): sc-94258, DYNC2L1 siRNA (m): sc-143207, DYNC2L1 shRNA Plasmid (h): sc-94258-SH, DYNC2L1 shRNA Plasmid (m): sc-143207-SH, DYNC2L1 shRNA (h) Lentiviral Particles: sc-94258-V and DYNC2L1 shRNA (m) Lentiviral Particles: sc-143207-V.

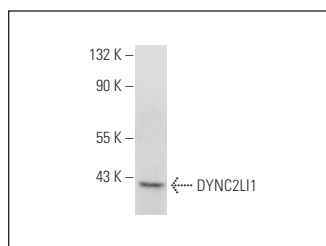
Molecular Weight of DYNC2L1: 40 kDa.

Positive Controls: mouse liver extract: sc-2256.

RECOMMENDED SECONDARY REAGENTS

To ensure optimal results, the following support (secondary) reagents are recommended: 1) Western Blotting: use donkey anti-goat IgG-HRP: sc-2020 (dilution range: 1:2000-1:100,000) or Cruz Marker™ compatible donkey anti-goat IgG-HRP: sc-2033 (dilution range: 1:2000-1:5000), Cruz Marker™ Molecular Weight Standards: sc-2035, TBS Blotto A Blocking Reagent: sc-2333 and Western Blotting Luminol Reagent: sc-2048. 2) Immunoprecipitation: use Protein A/G PLUS-Agarose: sc-2003 (0.5 ml agarose/2.0 ml). 3) Immunofluorescence: use donkey anti-goat IgG-FITC: sc-2024 (dilution range: 1:100-1:400) or donkey anti-goat IgG-TR: sc-2783 (dilution range: 1:100-1:400) with UltraCruz™ Mounting Medium: sc-24941.

DATA



DYNC2L1 (D-13): sc-167703. Western blot analysis of DYNC2L1 expression in mouse liver tissue extract.

STORAGE

Store at 4° C, **DO NOT FREEZE**. Stable for one year from the date of shipment. Non-hazardous. No MSDS required.

RESEARCH USE

For research use only, not for use in diagnostic procedures.

PROTOCOLS

See our web site at www.scbt.com or our catalog for detailed protocols and support products.