

GLIPR1L2 (E-16): sc-167989

BACKGROUND

The GLIPR1 (glioma pathogenesis-related 1) family consists of three core members, designated GLIPR1, GLIPR1L1 and GLIPR1L2 (GLIPR1-like protein 2), which form a distinct subgroup within the cysteine-rich secretory protein (CRISP), antigen 5 and pathogenesis-related 1 (CAP) superfamily. Each member of the CAP superfamily has a conserved N-terminal CAP domain and a distinct C-terminal extension. CAP superfamily proteins are hypothesized to have roles in immunity, cell adhesion, carcinogenesis and male fertility. GLIPR1L2 is a 344 amino acid single-pass membrane protein. Up-regulated by doxycycline, GLIPR1L2 is expressed in prostate, kidney, bladder, lung and bone marrow, with highest expression in testis. GLIPR1L2 exists as six isoforms produced by alternative splicing events.

REFERENCES

1. Online Mendelian Inheritance in Man, OMIM™. 2006. Johns Hopkins University, Baltimore, MD. MIM Number: 610394. World Wide Web URL: <http://www.ncbi.nlm.nih.gov/omim/610394>
2. Ren, C., et al. 2006. Identification and characterization of RTVP1/GLIPR1-like genes, a novel p53 target gene cluster. *Genomics* 88: 163-172.
3. Chilukamarri, L., et al. 2007. Hypomethylation and aberrant expression of the glioma pathogenesis-related 1 gene in Wilms tumors. *Neoplasia* 9: 970-978.
4. Li, L., et al. 2008. Glioma pathogenesis-related protein 1 exerts tumor suppressor activities through proapoptotic reactive oxygen species-c-Jun-NH₂ kinase signaling. *Cancer Res.* 68: 434-443.
5. Gibbs, G.M., et al. 2008. The CAP superfamily: cysteine-rich secretory proteins, antigen 5, and pathogenesis-related 1 proteins—roles in reproduction, cancer, and immune defense. *Endocr. Rev.* 29: 865-897.

CHROMOSOMAL LOCATION

Genetic locus: GLIPR1L2 (human) mapping to 12q21.2; Glipr1l2 (mouse) mapping to 10 D2.

SOURCE

GLIPR1L2 (E-16) is an affinity purified goat polyclonal antibody raised against a peptide mapping near the N-terminus of GLIPR1L2 of human origin.

PRODUCT

Each vial contains 200 µg IgG in 1.0 ml of PBS with < 0.1% sodium azide and 0.1% gelatin.

Blocking peptide available for competition studies, sc-167989 P, (100 µg peptide in 0.5 ml PBS containing < 0.1% sodium azide and 0.2% BSA).

STORAGE

Store at 4° C, **DO NOT FREEZE**. Stable for one year from the date of shipment. Non-hazardous. No MSDS required.

RESEARCH USE

For research use only, not for use in diagnostic procedures.

APPLICATIONS

GLIPR1L2 (E-16) is recommended for detection of GLIPR1L2 of mouse, rat and human origin by Western Blotting (starting dilution 1:200, dilution range 1:100-1:1000), immunoprecipitation [1-2 µg per 100-500 µg of total protein (1 ml of cell lysate)], immunofluorescence (starting dilution 1:50, dilution range 1:50-1:500) and solid phase ELISA (starting dilution 1:30, dilution range 1:30-1:3000); non cross-reactive with other GLIPR family members.

GLIPR1L2 (E-16) is also recommended for detection of GLIPR1L2 in additional species, including canine.

Suitable for use as control antibody for GLIPR1L2 siRNA (h): sc-95979, GLIPR1L2 siRNA (m): sc-145424, GLIPR1L2 shRNA Plasmid (h): sc-95979-SH, GLIPR1L2 shRNA Plasmid (m): sc-145424-SH, GLIPR1L2 shRNA (h) Lentiviral Particles: sc-95979-V and GLIPR1L2 shRNA (m) Lentiviral Particles: sc-145424-V.

Molecular Weight of GLIPR1L2 isoforms 1/2/3: 40/29/12 kDa.

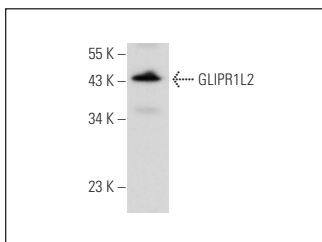
Molecular Weight of GLIPR1L2 isoforms 4/5/6: 19/28/33 kDa.

Positive Controls: WiDR cell lysate: sc-24779, IMR-32 cell lysate: sc-2409 or human prostate extract: sc-363774.

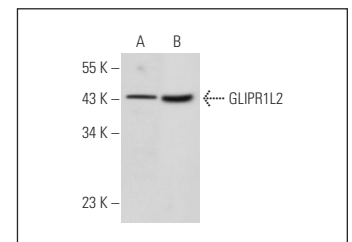
RECOMMENDED SECONDARY REAGENTS

To ensure optimal results, the following support (secondary) reagents are recommended: 1) Western Blotting: use donkey anti-goat IgG-HRP: sc-2020 (dilution range: 1:2000-1:100,000) or Cruz Marker™ compatible donkey anti-goat IgG-HRP: sc-2033 (dilution range: 1:2000-1:5000), Cruz Marker™ Molecular Weight Standards: sc-2035, TBS Blotto A Blocking Reagent: sc-2333 and Western Blotting Luminol Reagent: sc-2048. 2) Immunoprecipitation: use Protein A/G PLUS-Agarose: sc-2003 (0.5 ml agarose/2.0 ml). 3) Immunofluorescence: use donkey anti-goat IgG-FITC: sc-2024 (dilution range: 1:100-1:400) or donkey anti-goat IgG-TR: sc-2783 (dilution range: 1:100-1:400) with UltraCruz™ Mounting Medium: sc-24941.

DATA



GLIPR1L2 (E-16): sc-167989. Western blot analysis of GLIPR1L2 expression in human prostate tissue extract.



GLIPR1L2 (E-16): sc-167989. Western blot analysis of GLIPR1L2 expression in WiDR (A) and IMR-32 (B) whole cell lysates.

PROTOCOLS

See our web site at www.scbt.com or our catalog for detailed protocols and support products.