

c-Kit (C-19): sc-168

BACKGROUND

The c-Kit proto-oncogene is a member of the receptor tyrosine kinase family and, more specifically, is closely related to the platelet derived growth factor receptor (PDGFR). c-Kit, the normal cellular homolog of the HZ4-feline sarcoma virus transforming gene (v-Kit), encodes a transmembrane receptor. c-Kit regulates a variety of biological responses including chemotaxis, cell proliferation, apoptosis and adhesion. c-Kit is also identical with the product of the W locus in mice and, as such, is integral to the development of mast cells and hematopoiesis. The ligand for the c-Kit receptor (KL) has been identified and is encoded at the murine steel (Sl) locus. Kit is the human homolog of the proto-oncogene c-Kit. Mutations in Kit are integral for tumor growth and progression in various cancers.

CHROMOSOMAL LOCATION

Genetic locus: KIT (human) mapping to 4q12; Kit (mouse) mapping to 5 C3.3.

SOURCE

c-Kit (C-19) is available as either rabbit (sc-168) or goat (sc-168-G) affinity purified polyclonal antibody raised against a peptide mapping within the C-terminus of c-Kit of human origin.

PRODUCT

Each vial contains either 100 µg (sc-168) or 200 µg (sc-168-G) IgG in 1.0 ml of PBS with < 0.1% sodium azide and 0.1% gelatin.

Blocking peptide available for competition studies, sc-168 P, (100 µg peptide in 0.5 ml PBS containing < 0.1% sodium azide and 0.2% BSA).

Available as agarose conjugate for immunoprecipitation, sc-168 AC, 500 µg/0.25 ml agarose in 1 ml.

APPLICATIONS

c-Kit (C-19) is recommended for detection of c-Kit p145 of mouse, rat and human origin by Western Blotting (starting dilution 1:200, dilution range 1:100-1:1000), immunoprecipitation [1-2 µg per 100-500 µg of total protein (1 ml of cell lysate)], immunofluorescence (starting dilution 1:50, dilution range 1:50-1:500), immunohistochemistry (including paraffin-embedded sections) (starting dilution 1:50, dilution range 1:50-1:500) and solid phase ELISA (starting dilution 1:30, dilution range 1:30-1:3000).

c-Kit (C-19) is also recommended for detection of c-Kit p145 in additional species, including canine.

Suitable for use as control antibody for c-Kit siRNA (h): sc-29225, c-Kit siRNA (m): sc-29852, c-Kit shRNA Plasmid (h): sc-29225-SH, c-Kit shRNA Plasmid (m): sc-29852-SH, c-Kit shRNA (h) Lentiviral Particles: sc-29225-V, c-Kit shRNA (m) Lentiviral Particles: sc-29852-V.

Molecular Weight of c-Kit precursor: 120 kDa.

Molecular Weight of mature c-Kit: 145 kDa.

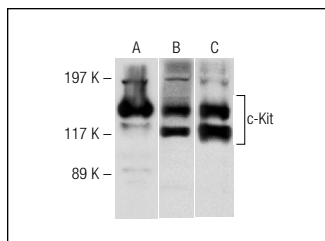
STORAGE

Store at 4° C, ****DO NOT FREEZE****. Stable for one year from the date of shipment. Non-hazardous. No MSDS required.

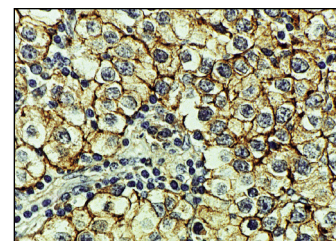
RESEARCH USE

For research use only, not for use in diagnostic procedures.

DATA



Western blot analysis of c-Kit expression in CCRF-HSB-2 whole cell lysates (**A-C**). Antibodies tested include c-Kit (C-19): sc-168 (**A**), c-Kit (C-14): sc-1493 (**B**) and c-Kit (M-14): sc-1494 (**C**).



c-Kit (C-19): sc-168. Immunoperoxidase staining of Bouin's-fixed, paraffin-embedded invasive testicular germ cell tumor tissue showing distinct membrane staining. Kindly provided by E. Rajpert-De Meyts.

SELECT PRODUCT CITATIONS

- Feng, G.S., et al. 1996. Grap is a novel SH3-SH2-SH3 adaptor protein that couples tyrosine kinases to the Ras pathway. *J. Biol. Chem.* 271: 12129-12132.
- Davis, D.R., et al. 2010. Isolation and expansion of functionally-competent cardiac progenitor cells directly from heart biopsies. *J. Mol. Cell. Cardiol.* 49: 312-321.
- Gassei, K., et al. 2010. Magnetic activated cell sorting allows isolation of spermatogonia from adult primate testes and reveals distinct GFRa1-positive subpopulations in men. *J. Med. Primatol.* 39: 83-91.
- Phillips, M.D., et al. 2011. Dkk1 and Dkk2 regulate epicardial specification during mouse heart development. *Int. J. Cardiol.* 150: 186-192.
- Jahnukainen, K., et al. 2011. Testicular recovery after irradiation differs in prepubertal and pubertal non-human primates, and can be enhanced by autologous germ cell transplantation. *Hum. Reprod.* 26: 1945-1954.
- Wang, W., et al. 2011. Statins enhance clonal growth of late outgrowth endothelial progenitors and increase myocardial capillary density in the chronically ischemic heart. *PLoS ONE* 6: e24868.
- Raucci, F., et al. 2011. Localization of c-kit and stem cell factor (SCF) in ovarian follicular epithelium of a lizard, *Podarcis s. sicula*. *Acta Histochem.* 113: 647-655.
- Pimenta, M.T., et al. 2015. Relaxin affects cell organization and early and late stages of spermatogenesis in a coculture of rat testicular cells. *Andrology* 3: 772-386.

MONOS
Satisfaction
Guaranteed

Try **c-Kit (E-3): sc-365504** or **c-Kit (Ab 81): sc-13508**, our highly recommended monoclonal alternatives to c-Kit (C-19). Also, for AC, HRP, FITC, PE, Alexa Fluor[®] 488 and Alexa Fluor[®] 647 conjugates, see **c-Kit (E-3): sc-365504**.