

## IL-1F10 (C-15): sc-168148

### BACKGROUND

IL-1 (interleukin-1) is a cytokine responsible for initiating a variety of activities through the activation of transcription factors, NF $\kappa$ B and AP-1, thereby promoting host response to injury or infection. The IL-1 superfamily is comprised of several ligands and receptors. IL-1F10 (interleukin-1 family member 10), also known as FIL1T, IL1HY2 or FKSG75, is a 152 amino acid secreted protein that belongs to the IL-1 family. Expressed in fetal skin, spleen and tonsil, IL-1F10 is most highly expressed in the basal epithelia of skin and proliferating B-cells of the tonsil. IL-1F10 binds soluble IL-1 receptor type 1, and is one of nine interleukin 1 families clustered on chromosome 2, where it is thought to participate in the regulation of adapted and innate immune responses. Existing as two alternatively spliced isoforms, IL-1F10 is encoded by a gene that maps to human chromosome 2q13 and mouse chromosome 2 A3.

### REFERENCES

- Lin, H., et al. 2001. Cloning and characterization of IL-1HY2, a novel interleukin-1 family member. *J. Biol. Chem.* 276: 20597-20602.
- Bensen, J.T., et al. 2001. Identification of a novel human cytokine gene in the interleukin gene cluster on chromosome 2q12-14. *J. Interferon Cytokine Res.* 21: 899-904.
- Nicklin, M.J., et al. 2002. A sequence-based map of the nine genes of the human interleukin-1 cluster. *Genomics* 79: 718-725.
- Taylor, S.L., et al. 2002. Genomic organization of the interleukin-1 locus. *Genomics* 79: 726-733.
- Rahman, P., et al. 2006. Association between the interleukin-1 family gene cluster and psoriatic arthritis. *Arthritis Rheum.* 54: 2321-2325.
- Sims, A.M., et al. 2008. Prospective meta-analysis of interleukin 1 gene complex polymorphisms confirms associations with ankylosing spondylitis. *Ann. Rheum. Dis.* 67: 1305-1309.
- Guo, Z.S., et al. 2010. Association of IL-1 gene complex members with ankylosing spondylitis in Chinese Han population. *Int. J. Immunogenet.* 37: 33-37.
- Jung, M.Y., et al. 2010. The interleukin-1 family gene polymorphisms in Korean patients with rheumatoid arthritis. *Scand. J. Rheumatol.* 39: 190-196.

### CHROMOSOMAL LOCATION

Genetic locus: IL1F10 (human) mapping to 2q13; Il1f10 (mouse) mapping to 2 A3.

### SOURCE

IL-1F10 (C-15) is an affinity purified goat polyclonal antibody raised against a peptide mapping near the C-terminus of IL-1F10 of human origin.

### STORAGE

Store at 4° C, \*\*DO NOT FREEZE\*\*. Stable for one year from the date of shipment. Non-hazardous. No MSDS required.

### PRODUCT

Each vial contains 200  $\mu$ g IgG in 1.0 ml of PBS with < 0.1% sodium azide and 0.1% gelatin.

Blocking peptide available for competition studies, sc-168148 P, (100  $\mu$ g peptide in 0.5 ml PBS containing < 0.1% sodium azide and 0.2% BSA).

### APPLICATIONS

IL-1F10 (C-15) is recommended for detection of IL-1F10 of mouse, rat and human origin by Western Blotting (starting dilution 1:200, dilution range 1:100-1:1000), immunoprecipitation [1-2  $\mu$ g per 100-500  $\mu$ g of total protein (1 ml of cell lysate)], immunofluorescence (starting dilution 1:50, dilution range 1:50-1:500) and solid phase ELISA (starting dilution 1:30, dilution range 1:30-1:3000); non cross-reactive with other IL-1F family members.

IL-1F10 (C-15) is also recommended for detection of IL-1F10 in additional species, including equine and bovine.

Suitable for use as control antibody for IL-1F10 siRNA (h): sc-94570, IL-1F10 siRNA (m): sc-146210, IL-1F10 shRNA Plasmid (h): sc-94570-SH, IL-1F10 shRNA Plasmid (m): sc-146210-SH, IL-1F10 shRNA (h) Lentiviral Particles: sc-94570-V and IL-1F10 shRNA (m) Lentiviral Particles: sc-146210-V.

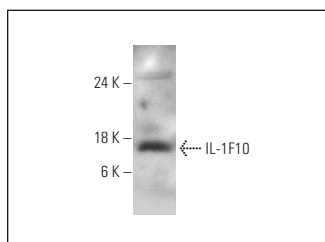
Molecular Weight of IL-1F10: 17 kDa.

Positive Controls: human liver extract: sc-363766.

### RECOMMENDED SECONDARY REAGENTS

To ensure optimal results, the following support (secondary) reagents are recommended: 1) Western Blotting: use donkey anti-goat IgG-HRP: sc-2020 (dilution range: 1:2000-1:100,000) or Cruz Marker™ compatible donkey anti-goat IgG-HRP: sc-2033 (dilution range: 1:2000-1:5000), Cruz Marker™ Molecular Weight Standards: sc-2035, TBS Blotto A Blocking Reagent: sc-2333 and Western Blotting Luminol Reagent: sc-2048. 2) Immunoprecipitation: use Protein A/G PLUS-Agarose: sc-2003 (0.5 ml agarose/2.0 ml). 3) Immunofluorescence: use donkey anti-goat IgG-FITC: sc-2024 (dilution range: 1:100-1:400) or donkey anti-goat IgG-TR: sc-2783 (dilution range: 1:100-1:400) with UltraCruz™ Mounting Medium: sc-24941.

### DATA



IL-1F10 (C-15): sc-168148. Western blot analysis of IL-1F10 expression in human liver tissue extract.

### RESEARCH USE

For research use only, not for use in diagnostic procedures.