

IL-22R α 1 (G-20): sc-168173

BACKGROUND

IL-22R α 1 (interleukin 22 receptor, α 1), whose alternative names include IL22R, cytokine receptor family 2 member 9, CRF2-9 or IL22R1, is a 574 amino acid single-pass type I membrane protein belonging to the type II cytokine receptor family. IL-22R α 1 is a component of IL20, IL22 and IL24 receptors, and exists as a heterodimer with IL-10R β and IL-20R β . Expressed in lung, liver kidney, colon and pancreas, IL-22R α 1 is also found in keratinocytes of normal skin and psoriatic skin lesions, normal blood brain barrier endothelial cells, and is strongly expressed in infiltrated multiple sclerosis lesions of central nervous system vessels. IL-22R α 1 increases the innate immune responses in inflammatory diseases, and IL-22R α 1 defects are associated with severe chronic rhinosinusitis. Containing two fibronectin type-III domains, IL-22R α 1 is encoded by a gene which maps to human chromosome 1p36.11.

REFERENCES

- Xie, M.H., Aggarwal, S., Ho, W.H., Foster, J., Zhang, Z., Stinson, J., Wood, W.I., Goddard, A.D. and Gurney, A.L. 2000. Interleukin (IL)-22, a novel human cytokine that signals through the interferon receptor-related proteins CRF2-4 and IL-22R. *J. Biol. Chem.* 275: 31335-31339.
- Kotenko, S.V., Izotova, L.S., Mirochnitchenko, O.V., Esterova, E., Dickensheets, H., Donnelly, R.P. and Pestka, S. 2001. Identification of the functional interleukin-22 (IL-22) receptor complex: the IL-10R2 chain (IL-10R β) is a common chain of both the IL-10 and IL-22 (IL-10-related T cell-derived inducible factor, IL-TIF) receptor complexes. *J. Biol. Chem.* 276: 2725-2732.
- Wolk, K., Kunz, S., Witte, E., Friedrich, M., Asadullah, K. and Sabat, R. 2004. IL-22 increases the innate immunity of tissues. *Immunity* 21: 241-254.
- Online Mendelian Inheritance in Man, OMIM™. 2006. Johns Hopkins University, Baltimore, MD. MIM Number: 605457. World Wide Web URL: <http://www.ncbi.nlm.nih.gov/omim/>

CHROMOSOMAL LOCATION

Genetic locus: IL22RA1 (human) mapping to 1p36.11.

SOURCE

IL-22R α 1 (G-20) is an affinity purified goat polyclonal antibody raised against a peptide mapping within a cytoplasmic domain of IL-22R α 1 of human origin.

PRODUCT

Each vial contains 200 μ g IgG in 1.0 ml of PBS with < 0.1% sodium azide and 0.1% gelatin.

Blocking peptide available for competition studies, sc-168173 P, (100 μ g peptide in 0.5 ml PBS containing < 0.1% sodium azide and 0.2% BSA).

STORAGE

Store at 4° C, ****DO NOT FREEZE****. Stable for one year from the date of shipment. Non-hazardous. No MSDS required.

APPLICATIONS

L-22R α 1 (G-20) is recommended for detection of IL-22R α 1 of human origin by Western Blotting (starting dilution 1:200, dilution range 1:100-1:1000), immunoprecipitation [1-2 μ g per 100-500 μ g of total protein (1 ml of cell lysate)], immunofluorescence (starting dilution 1:50, dilution range 1:50-1:500) and solid phase ELISA (starting dilution 1:30, dilution range 1:30-1:3000); non cross-reactive with IL-22R α 2.

Suitable for use as control antibody for IL-22R α 1 siRNA (h): sc-88174, IL-22R α 1 shRNA Plasmid (h): sc-88174-SH and IL-22R α 1 shRNA (h) Lentiviral Particles: sc-88174-V.

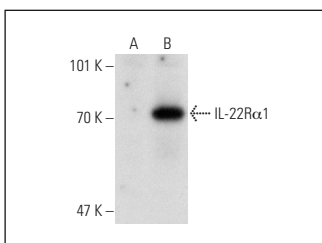
Molecular Weight of IL-22R α 1: 63 kDa.

Positive Controls: IL-22R α 1 (h): 293T Lysate: sc-114543.

RECOMMENDED SECONDARY REAGENTS

To ensure optimal results, the following support (secondary) reagents are recommended: 1) Western Blotting: use donkey anti-goat IgG-HRP: sc-2020 (dilution range: 1:2000-1:100,000) or Cruz Marker™ compatible donkey anti-goat IgG-HRP: sc-2033 (dilution range: 1:2000-1:5000), Cruz Marker™ Molecular Weight Standards: sc-2035, TBS Blotto A Blocking Reagent: sc-2333 and Western Blotting Luminol Reagent: sc-2048. 2) Immunoprecipitation: use Protein A/G PLUS-Agarose: sc-2003 (0.5 ml agarose/2.0 ml). 3) Immunofluorescence: use donkey anti-goat IgG-FITC: sc-2024 (dilution range: 1:100-1:400) or donkey anti-goat IgG-TR: sc-2783 (dilution range: 1:100-1:400) with UltraCruz™ Mounting Medium: sc-24941.

DATA



IL-22R α 1 (G-20): sc-168173. Western blot analysis of IL-22R α 1 expression in non-transfected: sc-117752 (A) and human IL-22R α 1 transfected: sc-114543 (B) 293T whole cell lysates.

RESEARCH USE

For research use only, not for use in diagnostic procedures.

MONOS
Satisfaction
Guaranteed

Try **IL-22R α 1 (3-RE40): sc-134366**, our highly recommended monoclonal alternative to IL-22R α 1 (G-20).