

IL-26 (T-12): sc-168179

BACKGROUND

The interleukins (ILs) are a broad family of well characterized cytokines, primarily of hematopoietic cell origin. They are secreted by immune cells (mainly macrophages, B cells or T cells) that regulate a wide range of immune system functions. The specific functions of different interleukins vary from the regulation of inflammatory and immune responses to the regulation of other interleukins. IL-26, also known as AK155, is a member of the IL-10 family of cytokines that is generated by memory cells and expressed on T cells. Similar to IL-10, IL-26 can form stable homodimers. IL-26 signals through IL-26R, the heterodimeric receptor composed of IL-20R1 and IL-10R2. It activates the JAK/Stat pathway and predominantly stimulates Stat3 but it can also signal through Stat1. IL-26 also plays a role in the transformed phenotype of T cells after infection by herpes virus.

REFERENCES

1. Wolk, K., et al. 2002. Cutting edge: immune cells as sources and targets of the IL-10 family members? *J. Immunol.* 168: 5397-5402.
2. Conti, P., et al. 2003. IL-10 subfamily members: IL-19, IL-20, IL-22, IL-24 and IL-26. *Immunol. Lett.* 88: 171-174.
3. Hör, S., et al. 2004. The T cell lymphokine Interleukin-26 targets epithelial cells through the Interleukin-20 receptor 1 and Interleukin-10 receptor 2 chains. *J. Biol. Chem.* 279: 33343-33351.
4. Fickenscher, H. and Pirzer, H. 2004. Interleukin-26. *Int. Immunopharmacol.* 4: 609-613.
5. Sheikh, F., et al. 2004. Cutting edge: IL-26 signals through a novel receptor complex composed of IL-20 receptor 1 and IL-10 receptor 2. *J. Immunol.* 172: 2006-2010.
6. Liao, S.C., et al. 2004. IL-19 induced Th2 cytokines and was upregulated in asthma patients. *J. Immunol.* 173: 6712-6718.
7. Donnelly, R.P., et al. 2004. The expanded family of class II cytokines that share the IL-10 receptor-2 (IL-10R2) chain. *J. Leukoc. Biol.* 76: 314-321.

CHROMOSOMAL LOCATION

Genetic locus: IL26 (human) mapping to 12q15.

SOURCE

IL-26 (T-12) is an affinity purified goat polyclonal antibody raised against a peptide mapping within an internal region of IL-26 of human origin.

PRODUCT

Each vial contains 200 µg IgG in 1.0 ml of PBS with < 0.1% sodium azide and 0.1% gelatin.

Blocking peptide available for competition studies, sc-168179 P, (100 µg peptide in 0.5 ml PBS containing < 0.1% sodium azide and 0.2% BSA).

STORAGE

Store at 4° C, ****DO NOT FREEZE****. Stable for one year from the date of shipment. Non-hazardous. No MSDS required.

APPLICATIONS

IL-26 (T-12) is recommended for detection of IL-26 of human origin by Western Blotting (starting dilution 1:200, dilution range 1:100-1:1000), immunoprecipitation [1-2 µg per 100-500 µg of total protein (1 ml of cell lysate)], immunofluorescence (starting dilution 1:50, dilution range 1:50-1:500) and solid phase ELISA (starting dilution 1:30, dilution range 1:30-1:3000); non cross-reactive with other IL family members.

IL-26 (T-12) is also recommended for detection of IL-26 in additional species, including canine and bovine.

Suitable for use as control antibody for IL-26 siRNA (h): sc-72398, IL-26 shRNA Plasmid (h): sc-72398-SH and IL-26 shRNA (h) Lentiviral Particles: sc-72398-V.

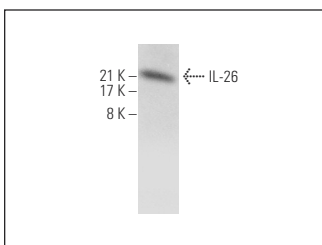
Molecular Weight of IL-26: 19 kDa.

Positive Controls: HeLa whole cell lysate: sc-2200.

RECOMMENDED SECONDARY REAGENTS

To ensure optimal results, the following support (secondary) reagents are recommended: 1) Western Blotting: use donkey anti-goat IgG-HRP: sc-2020 (dilution range: 1:2000-1:100,000) or Cruz Marker™ compatible donkey anti-goat IgG-HRP: sc-2033 (dilution range: 1:2000-1:5000), Cruz Marker™ Molecular Weight Standards: sc-2035, TBS Blotto A Blocking Reagent: sc-2333 and Western Blotting Luminol Reagent: sc-2048. 2) Immunoprecipitation: use Protein A/G PLUS-Agarose: sc-2003 (0.5 ml agarose/2.0 ml). 3) Immunofluorescence: use donkey anti-goat IgG-FITC: sc-2024 (dilution range: 1:100-1:400) or donkey anti-goat IgG-TR: sc-2783 (dilution range: 1:100-1:400) with UltraCruz™ Mounting Medium: sc-24941.

DATA



IL-26 (T-12): sc-168179. Western blot analysis of IL-26 expression in HeLa whole cell lysate.

RESEARCH USE

For research use only, not for use in diagnostic procedures.

MONOS
Satisfaction
Guaranteed

Try **IL-26 (LL07): sc-80523**, our highly recommended monoclonal alternative to IL-26 (T-12).