

KLHDC3 (C-20): sc-168367

BACKGROUND

The BTB (broad-complex, tramtrack and bric a brac) domain, also known as the POZ (poxvirus and zinc finger) domain, is an N-terminal homodimerization domain that contains multiple copies of kelch repeats and/or C₂H₂-type zinc fingers. Proteins that contain BTB domains are thought to be involved in transcriptional regulation via control of chromatin structure and function. The Kelch domain-containing protein 3 (KLHDC3), also designated PEAS, contains 5 Kelch repeats and may be involved in meiotic recombination process. The gene encoding KLHDC3 maps to chromosome 6, which contains around 1,200 genes within 170 million base pairs of sequence. Deletion of a portion of the q arm of chromosome 6 is associated with early onset intestinal cancer suggesting the presence of a cancer susceptibility locus. Porphyria cutanea tarda, Parkinson's disease, Stickler syndrome, 21-hydroxylase deficiency and maple syrup urine disease are also associated with genes on chromosome 6.

REFERENCES

1. Bardwell, V.J. and Treisman, R. 1994. The POZ domain: a conserved protein-protein interaction motif. *Genes Dev.* 8: 1664-1677.
2. Zollman, S., et al. 1994. The BTB domain, found primarily in zinc finger proteins, defines an evolutionarily conserved family that includes several developmentally regulated genes in *Drosophila*. *Proc. Natl. Acad. Sci. USA* 91: 10717-10721.
3. Ahmad, K.F., et al. 1998. Crystal structure of the BTB domain from PLZF. *Proc. Natl. Acad. Sci. USA* 95: 12123-12128.
4. Ohinata, Y., et al. 2003. A novel testis-specific RAG2-like protein, Peas: its expression in pachytene spermatocyte cytoplasm and meiotic chromatin. *FEBS Lett.* 537: 1-5.
5. Mungall, A.J., et al. 2003. The DNA sequence and analysis of human chromosome 6. *Nature* 425: 805-811.
6. Vuoristo, M.M., et al. 2004. A stop codon mutation in COL11A2 induces exon skipping and leads to non-ocular Stickler syndrome. *Am. J. Med. Genet. A* 130A: 160-164.
7. McQueen, M.B., et al. 2005. Combined analysis from eleven linkage studies of bipolar disorder provides strong evidence of susceptibility loci on chromosomes 6q and 8q. *Am. J. Hum. Genet.* 77: 582-595.

CHROMOSOMAL LOCATION

Genetic locus: KLHDC3 (human) mapping to 6p21.1; Klhdc3 (mouse) mapping to 17 C.

SOURCE

KLHDC3 (C-20) is an affinity purified goat polyclonal antibody raised against a peptide mapping at the C-terminus of KLHDC3 of human origin.

PRODUCT

Each vial contains 200 µg IgG in 1.0 ml of PBS with < 0.1% sodium azide and 0.1% gelatin.

Blocking peptide available for competition studies, sc-168367 P, (100 µg peptide in 0.5 ml PBS containing < 0.1% sodium azide and 0.2% BSA).

APPLICATIONS

KLHDC3 (C-20) is recommended for detection of KLHDC3 of mouse, rat and human origin by Western Blotting (starting dilution 1:200, dilution range 1:100-1:1000), immunoprecipitation [1-2 µg per 100-500 µg of total protein (1 ml of cell lysate)], immunofluorescence (starting dilution 1:50, dilution range 1:50-1:500) and solid phase ELISA (starting dilution 1:30, dilution range 1:30-1:3000); non cross-reactive with other KLHDC family members.

KLHDC3 (C-20) is also recommended for detection of KLHDC3 in additional species, including canine, bovine and porcine.

Suitable for use as control antibody for KLHDC3 siRNA (h): sc-95168, KLHDC3 siRNA (m): sc-146502, KLHDC3 shRNA Plasmid (h): sc-95168-SH, KLHDC3 shRNA Plasmid (m): sc-146502-SH, KLHDC3 shRNA (h) Lentiviral Particles: sc-95168-V and KLHDC3 shRNA (m) Lentiviral Particles: sc-146502-V.

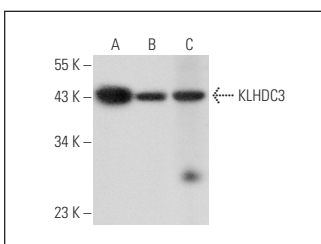
Molecular Weight of KLHDC3: 43 kDa.

Positive Controls: Raji whole cell lysate: sc-364236, Ramos nuclear extract: sc-2153 or human tonsil tissue extract: sc-364263.

RECOMMENDED SECONDARY REAGENTS

To ensure optimal results, the following support (secondary) reagents are recommended: 1) Western Blotting: use donkey anti-goat IgG-HRP: sc-2020 (dilution range: 1:2000-1:100,000) or Cruz Marker™ compatible donkey anti-goat IgG-HRP: sc-2033 (dilution range: 1:2000-1:5000), Cruz Marker™ Molecular Weight Standards: sc-2035, TBS Blotto A Blocking Reagent: sc-2333 and Western Blotting Luminol Reagent: sc-2048. 2) Immunoprecipitation: use Protein A/G PLUS-Agarose: sc-2003 (0.5 ml agarose/2.0 ml). 3) Immunofluorescence: use donkey anti-goat IgG-FITC: sc-2024 (dilution range: 1:100-1:400) or donkey anti-goat IgG-TR: sc-2783 (dilution range: 1:100-1:400) with UltraCruz™ Mounting Medium: sc-24941.

DATA



KLHDC3 (C-20): sc-168367. Western blot analysis of KLHDC3 expression in Raji whole cell lysate (A), Ramos nuclear extract (B) and human tonsil tissue extract (C).

STORAGE

Store at 4° C, **DO NOT FREEZE**. Stable for one year from the date of shipment. Non-hazardous. No MSDS required.

RESEARCH USE

For research use only, not for use in diagnostic procedures.