

# FGF-22 (N-20): sc-16847

## BACKGROUND

Fibroblast growth factor-1 (FGF-1), also designated acidic FGF, and fibroblast growth factor-2 (FGF-2), also designated basic FGF, are members of a family of growth factors that stimulate proliferation of cells of mesenchymal, epithelial and neuroectodermal origin. Additional members of the FGF family include the oncogenes FGF-3 (Int2) and FGF-4 (hst/kaposi), FGF-5, FGF-6, FGF-7 (KGF), FGF-8 (AIGF), FGF-9 (GAF) and FGF-10–FGF-23. Members of the FGF family share 30-55% amino acid sequence identity and similar gene structure, and are capable of transforming cultured cells when overexpressed in transfected cells. Cellular receptors for FGFs are members of a second multigene family including four tyrosine kinases, designated Flg (FGFR-1), Bek (FGFR-L), TKF and FGFR-3.

## REFERENCES

- Rifkin, D.B., et al. 1989. Recent developments in the cell biology of fibroblast growth factor. *J. Cell Biol.* 109: 1-6.
- Dionne, C.A., et al. 1990. Cloning and expression of two distinct high-affinity receptors cross-reacting with acidic and basic fibroblast growth factors. *EMBO J.* 9:2685-2692.
- Mansukhani, A., et al. 1992. Characterization of the murine BEK fibroblast growth factor (FGF) receptor: activation by three members of the FGF family and requirement for heparin. *Proc. Natl. Acad. Sci. USA* 89: 3305-3309.
- Nakatake, Y., et al. 2001. Identification of a novel fibroblast growth factor, FGF-22, preferentially expressed in the inner root sheath of the hair follicle. *Biochim. Biophys. Acta* 1517:460-463
- SWISS-PROT/TrEMBL (Q9HCT0). World Wide Web URL: <http://www.expasy.ch/sprot/sprot-top.html>

## CHROMOSOMAL LOCATION

Genetic locus: FGF22 (human) mapping to 19p13.3; Fgf22 (mouse) mapping to 10 C1.

## SOURCE

FGF-22 (N-20) is an affinity purified goat polyclonal antibody raised against a peptide mapping within an internal region of FGF-22 of human origin.

## PRODUCT

Each vial contains 200 µg IgG in 1.0 ml of PBS with < 0.1% sodium azide and 0.1% gelatin.

Blocking peptide available for competition studies, sc-16847 P, (100 µg peptide in 0.5 ml PBS containing < 0.1% sodium azide and 0.2% BSA).

## STORAGE

Store at 4° C, **\*\*DO NOT FREEZE\*\***. Stable for one year from the date of shipment. Non-hazardous. No MSDS required.

## PROTOCOLS

See our web site at [www.scbt.com](http://www.scbt.com) or our catalog for detailed protocols and support products.

## APPLICATIONS

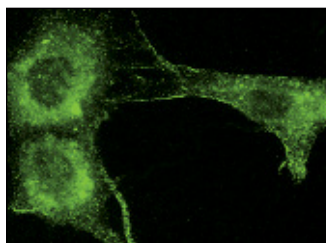
FGF-22 (N-20) is recommended for detection of precursor and mature FGF-22 of mouse, rat and human origin by Western Blotting (starting dilution 1:200, dilution range 1:100-1:1000), immunofluorescence (starting dilution 1:50, dilution range 1:50-1:500) and solid phase ELISA (starting dilution 1:30, dilution range 1:30-1:3000).

Suitable for use as control antibody for FGF-22 siRNA (h): sc-39675, FGF-22 siRNA (m): sc-39676, FGF-22 shRNA Plasmid (h): sc-39675-SH, FGF-22 shRNA Plasmid (m): sc-39676-SH, FGF-22 shRNA (h) Lentiviral Particles: sc-39675-V and FGF-22 shRNA (m) Lentiviral Particles: sc-39676-V.

## RECOMMENDED SECONDARY REAGENTS

To ensure optimal results, the following support (secondary) reagents are recommended: 1) Western Blotting: use donkey anti-goat IgG-HRP: sc-2020 (dilution range: 1:2000-1:100,000) or Cruz Marker™ compatible donkey anti-goat IgG-HRP: sc-2033 (dilution range: 1:2000-1:5000), Cruz Marker™ Molecular Weight Standards: sc-2035, TBS Blotto A Blocking Reagent: sc-2333 and Western Blotting Luminol Reagent: sc-2048. 2) Immunofluorescence: use donkey anti-goat IgG-FITC: sc-2024 (dilution range: 1:100-1:400) or donkey anti-goat IgG-TR: sc-2783 (dilution range: 1:100-1:400) with UltraCruz™ Mounting Medium: sc-24941.

## DATA



FGF-22 (N-20): sc-16847. Immunofluorescence staining of methanol-fixed BC<sub>3</sub>H1 cells showing cytoplasmic and cell surface localization.

## RESEARCH USE

For research use only, not for use in diagnostic procedures.