

Ly6G5b (E-13): sc-168490

BACKGROUND

Members of the lymphocyte antigen 6 superfamily are cysteine-rich and are usually GPI-anchored cell surface proteins having immunologic roles. Most hematopoietic cells express one or more members of the Ly-6 superfamily. Well-studied members of this family include CD59, an inhibitor of the complement cascade, uPAR, which is involved in proteolysis of extracellular matrix proteins, and Lynx-1, a modulator of nictonic acetylcholine receptors. Ly6G5b (lymphocyte antigen 6 complex locus protein G5b) is a 201 amino acid secreted protein that contains one UPAR/Ly6 domain, which is about 80 proteins long and has a conserved pattern of 8 to 10 cysteine residues. The gene encoding Ly6G5b maps within the human major histocompatibility complex class III region on chromosome 6p21.33. There are two isoforms of Ly6G5b that are produced as a result of alternative splicing events.

REFERENCES

1. Albertella, M.R., et al. 1996. Localization of eight additional genes in the human major histocompatibility complex, including the gene encoding the casein kinase II β subunit (CSNK2B). *Genomics* 36: 240-251.
2. Mallya, M., et al. 2002. Transcriptional analysis of a novel cluster of LY-6 family members in the human and mouse major histocompatibility complex: five genes with many splice forms. *Genomics* 80: 113-123.
3. Xie, T., et al. 2003. Analysis of the gene-dense major histocompatibility complex class III region and its comparison to mouse. *Genome Res.* 13: 2621-2636.
4. Mallya, M., et al. 2006. Characterization of the five novel Ly-6 superfamily members encoded in the MHC, and detection of cells expressing their potential ligands. *Protein Sci.* 15: 2244-2256.
5. Online Mendelian Inheritance in Man, OMIM[™]. 2006. Johns Hopkins University, Baltimore, MD. MIM Number: 610433. World Wide Web URL: <http://www.ncbi.nlm.nih.gov/omim/>
6. Calvanese, V., et al. 2008. Regulation of expression of two LY-6 family genes by intron retention and transcription induced chimerism. *BMC Mol. Biol.* 9: 81.

CHROMOSOMAL LOCATION

Genetic locus: LY6G5B (human) mapping to 6p21.33; Ly6g5b (mouse) mapping to 17 B1.

SOURCE

Ly6G5b (E-13) is an affinity purified goat polyclonal antibody raised against a peptide mapping near the N-terminus of Ly6G5b of human origin.

STORAGE

Store at 4° C, ****DO NOT FREEZE****. Stable for one year from the date of shipment. Non-hazardous. No MSDS required.

PROTOCOLS

See our web site at www.scbt.com or our catalog for detailed protocols and support products.

PRODUCT

Each vial contains 200 μ g IgG in 1.0 ml of PBS with < 0.1% sodium azide and 0.1% gelatin.

Blocking peptide available for competition studies, sc-168490 P, (100 μ g peptide in 0.5 ml PBS containing < 0.1% sodium azide and 0.2% BSA).

APPLICATIONS

Ly6G5b (E-13) is recommended for detection of Ly6G5b of mouse, rat and human origin by Western Blotting (starting dilution 1:200, dilution range 1:100-1:1000), immunoprecipitation [1-2 μ g per 100-500 μ g of total protein (1 ml of cell lysate)], immunofluorescence (starting dilution 1:50, dilution range 1:50-1:500) and solid phase ELISA (starting dilution 1:30, dilution range 1:30-1:3000); non cross-reactive with Ly6G5c.

Ly6G5b (E-13) is also recommended for detection of Ly6G5b in additional species, including equine, canine and porcine.

Suitable for use as control antibody for Ly6G5b siRNA (h): sc-95597, Ly6G5b siRNA (m): sc-149164, Ly6G5b shRNA Plasmid (h): sc-95597-SH, Ly6G5b shRNA Plasmid (m): sc-149164-SH, Ly6G5b shRNA (h) Lentiviral Particles: sc-95597-V and Ly6G5b shRNA (m) Lentiviral Particles: sc-149164-V.

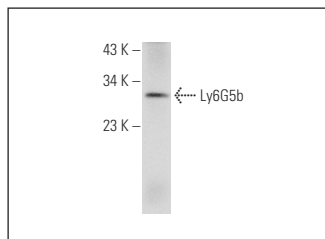
Molecular Weight of Ly6G5b isoform 1/2: 23/17 kDa.

Positive Controls: human lung extract: sc-363767.

RECOMMENDED SECONDARY REAGENTS

To ensure optimal results, the following support (secondary) reagents are recommended: 1) Western Blotting: use donkey anti-goat IgG-HRP: sc-2020 (dilution range: 1:2000-1:100,000) or Cruz Marker[™] compatible donkey anti-goat IgG-HRP: sc-2033 (dilution range: 1:2000-1:5000), Cruz Marker[™] Molecular Weight Standards: sc-2035, TBS Blotto A Blocking Reagent: sc-2333 and Western Blotting Luminol Reagent: sc-2048. 2) Immunoprecipitation: use Protein A/G PLUS-Agarose: sc-2003 (0.5 ml agarose/2.0 ml). 3) Immunofluorescence: use donkey anti-goat IgG-FITC: sc-2024 (dilution range: 1:100-1:400) or donkey anti-goat IgG-TR: sc-2783 (dilution range: 1:100-1:400) with UltraCruz[™] Mounting Medium: sc-24941.

DATA



Ly6G5b (E-13): sc-168490. Western blot analysis of Ly6G5b expression in human lung tissue extract.

RESEARCH USE

For research use only, not for use in diagnostic procedures.