

PSRC2 (L-15): sc-169062

BACKGROUND

PSRC2 (proline/serine-rich coiled-coil protein 2), also known as CCDC131 (coiled-coil domain-containing protein 131) or ZFC3H1 (zinc finger C₃H₁ domain-containing protein), is a 1,989 amino acid protein that exists as 3 alternatively spliced isoforms. PSRC2 is subject to post-translational phosphorylation, most likely by either ATR or Atm, and contains one C₃H₁-type zinc finger, six HAT repeats and five TPR repeats. The gene encoding PSRC2 maps to human chromosome 12, which encodes over 1,100 genes and comprises approximately 4.5% of the human genome. Chromosome 12 is associated with a variety of diseases and afflictions, including hypochondrogenesis, achondrogenesis, Kniest dysplasia, Noonan syndrome and trisomy 12p, which causes facial developmental defects and seizure disorders.

REFERENCES

- Allen, T.L., et al. 1996. Cytogenetic and molecular analysis in trisomy 12p. *Am. J. Med. Genet.* 63: 250-256.
- Delgado Carrasco, J., et al. 2001. Achondrogenesis type II-hypochondrogenesis: radiological features. *An. Esp. Pediatr.* 55: 553-557.
- Yokoyama, T., et al. 2003. A case of Kniest dysplasia with retinal detachment and the mutation analysis. *Am. J. Ophthalmol.* 136: 1186-1188.
- Forzano, F., et al. 2007. A familial case of achondrogenesis type II caused by a dominant COL2A1 mutation and "patchy" expression in the mosaic father. *Am. J. Med. Genet. A* 143A: 2815-2820.
- Matsuoka, S., et al. 2007. ATM and ATR substrate analysis reveals extensive protein networks responsive to DNA damage. *Science* 316: 1160-1166.
- Wainwright, H. and Beighton, P. 2008. Visceral manifestations of hypochondrogenesis. *Virchows Arch.* 453: 203-207.
- Lo, F.S., et al. 2009. High resolution melting analysis for mutation detection for PTPN11 gene: applications of this method for diagnosis of Noonan syndrome. *Clin. Chim. Acta* 409: 75-77.

CHROMOSOMAL LOCATION

Genetic locus: ZFC3H1 (human) mapping to 12q21.1; Zfc3h1 (mouse) mapping to 10 D2.

SOURCE

PSRC2 (L-15) is an affinity purified goat polyclonal antibody raised against a peptide mapping near the N-terminus of PSRC2 of human origin.

PRODUCT

Each vial contains 200 µg IgG in 1.0 ml of PBS with < 0.1% sodium azide and 0.1% gelatin.

Blocking peptide available for competition studies, sc-169062 P, (100 µg peptide in 0.5 ml PBS containing < 0.1% sodium azide and 0.2% BSA).

STORAGE

Store at 4° C, **DO NOT FREEZE**. Stable for one year from the date of shipment. Non-hazardous. No MSDS required.

APPLICATIONS

PSRC2 (L-15) is recommended for detection of PSRC2 of mouse, rat and human origin by Western Blotting (starting dilution 1:200, dilution range 1:100-1:1000), immunoprecipitation [1-2 µg per 100-500 µg of total protein (1 ml of cell lysate)], immunofluorescence (starting dilution 1:50, dilution range 1:50-1:500) and solid phase ELISA (starting dilution 1:30, dilution range 1:30-1:3000).

Suitable for use as control antibody for PSRC2 siRNA (h): sc-96003, PSRC2 siRNA (m): sc-152567, PSRC2 shRNA Plasmid (h): sc-96003-SH, PSRC2 shRNA Plasmid (m): sc-152567-SH, PSRC2 shRNA (h) Lentiviral Particles: sc-96003-V and PSRC2 shRNA (m) Lentiviral Particles: sc-152567-V.

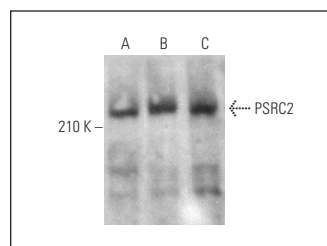
Molecular Weight of PSRC2 isoforms: 226/217/38 kDa.

Positive Controls: PSRC2 (h3): 293T Lysate: sc-172999, MDA-MB-231 cell lysate: sc-2232 or K-562 whole cell lysate: sc-2203.

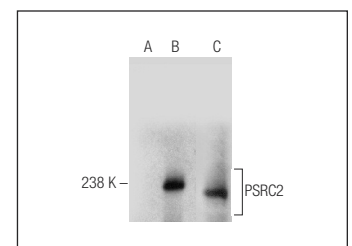
RECOMMENDED SECONDARY REAGENTS

To ensure optimal results, the following support (secondary) reagents are recommended: 1) Western Blotting: use donkey anti-goat IgG-HRP: sc-2020 (dilution range: 1:2000-1:100,000) or Cruz Marker™ compatible donkey anti-goat IgG-HRP: sc-2033 (dilution range: 1:2000-1:5000), Cruz Marker™ Molecular Weight Standards: sc-2035, TBS Blotto A Blocking Reagent: sc-2333 and Western Blotting Luminol Reagent: sc-2048. 2) Immunoprecipitation: use Protein A/G PLUS-Agarose: sc-2003 (0.5 ml agarose/2.0 ml). 3) Immunofluorescence: use donkey anti-goat IgG-FITC: sc-2024 (dilution range: 1:100-1:400) or donkey anti-goat IgG-TR: sc-2783 (dilution range: 1:100-1:400) with UltraCruz™ Mounting Medium: sc-24941.

DATA



PSRC2 (L-15): sc-169062. Western blot analysis of PSRC2 expression in MDA-MB-231 (A), K-562 (B) and Ramos (C) whole cell lysates.



PSRC2 (L-15): sc-169062. Western blot analysis of PSRC2 expression in non-transfected 293T: sc-117752 (A), human PSRC2 transfected 293T: sc-172999 (B) and HEL 92.1.7 (C) whole cell lysates.

RESEARCH USE

For research use only, not for use in diagnostic procedures.

PROTOCOLS

See our web site at www.scbt.com or our catalog for detailed protocols and support products.