

# RHOXF2/2B (D-14): sc-169149

## BACKGROUND

RHOXF2 (rhoX homeobox family, member 2), also known as THG1, CT107 or paired-like homeobox protein PEPP-2, is a 288 amino acid nuclear protein expressed in testis. A similar protein, RHOXF2B (rhoX homeobox family, member 2B), also contains 288 amino acids. Both RHOXF2 and RHOXF2B contain one homeobox DNA-binding domain and belong to the paired-like homeobox family and PEPP subfamily. Both proteins are encoded by genes that map to human chromosome X, which consists of about 153 million base pairs and nearly 1,000 genes. Color blindness, hemophilia and Duchenne muscular dystrophy are well known X chromosome-linked conditions which affect males more frequently, as males carry a single X chromosome.

## REFERENCES

- Lin, T.P., Labosky, P.A., Grabel, L.B., Kozak, C.A., Pitman, J.L., Kleeman, J. and MacLeod, C.L. 1994. The Pem homeobox gene is X-linked and exclusively expressed in extraembryonic tissues during early murine development. *Dev. Biol.* 166: 170-179.
- Maiti, S., Doskow, J., Sutton, K., Nhim, R.P., Lawlor, D.A., Levan, K., Lindsey, J.S. and Wilkinson, M.F. 1996. The Pem homeobox gene: rapid evolution of the homeodomain, X chromosomal localization, and expression in reproductive tissue. *Genomics* 34: 304-316.
- Sutton, K.A. and Wilkinson, M.F. 1997. The rapidly evolving Pem homeobox gene and Agtr2, Ant2, and Lamp2 are closely linked in the proximal region of the mouse X chromosome. *Genomics* 45: 447-450.
- Wayne, C.M., MacLean, J.A., Cornwall, G. and Wilkinson, M.F. 2002. Two novel human X-linked homeobox genes, hPEPP1 and hPEPP2, selectively expressed in the testis. *Gene* 301: 1-11.
- Maclean, J.A., Chen, M.A., Wayne, C.M., Bruce, S.R., Rao, M., Meistrich, M.L., Macleod, C. and Wilkinson, M.F. 2005. Rhox: a new homeobox gene cluster. *Cell* 120: 369-382.
- Deeb, S.S. 2005. The molecular basis of variation in human color vision. *Clin. Genet.* 67: 369-377.
- Online Mendelian Inheritance in Man, OMIM<sup>™</sup>. 2005. Johns Hopkins University, Baltimore, MD. MIM Number: 300447. World Wide Web URL: <http://www.ncbi.nlm.nih.gov/omim/>
- Helderman-van den Enden, A.T., de Jong, R., den Dunnen, J.T., Houwing-Duistermaat, J.J., Kneppers, A.L., Ginjaar, H.B., Breuning, M.H. and Bakker, E. 2009. Recurrence risk due to germ line mosaicism: Duchenne and Becker muscular dystrophy. *Clin. Genet.* 75: 465-472.

## CHROMOSOMAL LOCATION

Genetic locus: RHOXF2/RHOXF2B (human) mapping to Xq24.

## SOURCE

RHOXF2/2B (D-14) is an affinity purified goat polyclonal antibody raised against a peptide mapping near the N-terminus of RHOXF2 of human origin.

## RESEARCH USE

For research use only, not for use in diagnostic procedures.

## PRODUCT

Each vial contains 200 µg IgG in 1.0 ml of PBS with < 0.1% sodium azide and 0.1% gelatin.

Blocking peptide available for competition studies, sc-169149 P, (100 µg peptide in 0.5 ml PBS containing < 0.1% sodium azide and 0.2% BSA).

## APPLICATIONS

RHOXF2/2B (D-14) is recommended for detection of RHOXF2 and RHOXF2B of human origin by Western Blotting (starting dilution 1:200, dilution range 1:100-1:1000), immunoprecipitation [1-2 µg per 100-500 µg of total protein (1 ml of cell lysate)], immunofluorescence (starting dilution 1:50, dilution range 1:50-1:500) and solid phase ELISA (starting dilution 1:30, dilution range 1:30-1:3000); non cross-reactive with RHOXF1.

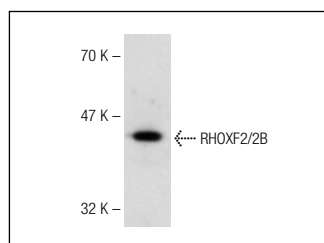
Molecular Weight of RHOXF2/2B: 31 kDa.

Positive Controls: K-562 whole cell lysate: sc-2203.

## RECOMMENDED SECONDARY REAGENTS

To ensure optimal results, the following support (secondary) reagents are recommended: 1) Western Blotting: use donkey anti-goat IgG-HRP: sc-2020 (dilution range: 1:2000-1:100,000) or Cruz Marker<sup>™</sup> compatible donkey anti-goat IgG-HRP: sc-2033 (dilution range: 1:2000-1:5000), Cruz Marker<sup>™</sup> Molecular Weight Standards: sc-2035, TBS Blotto A Blocking Reagent: sc-2333 and Western Blotting Luminol Reagent: sc-2048. 2) Immunoprecipitation: use Protein A/G PLUS-Agarose: sc-2003 (0.5 ml agarose/2.0 ml). 3) Immunofluorescence: use donkey anti-goat IgG-FITC: sc-2024 (dilution range: 1:100-1:400) or donkey anti-goat IgG-TR: sc-2783 (dilution range: 1:100-1:400) with UltraCruz<sup>™</sup> Mounting Medium: sc-24941.

## DATA



RHOXF2/2B (D-14): sc-169149. Western blot analysis of RHOXF2/2B expression in K-562 whole cell lysate.

## STORAGE

Store at 4° C, **\*\*DO NOT FREEZE\*\***. Stable for one year from the date of shipment. Non-hazardous. No MSDS required.

## PROTOCOLS

See our web site at [www.scbt.com](http://www.scbt.com) or our catalog for detailed protocols and support products.