

# SDCCAG3 (E-16): sc-169266

## BACKGROUND

SDCCAG3 (serologically defined colon cancer antigen 3) is a 435 amino acid protein that belongs to the SDCCAG3 family. Localizing to cytoplasm, the SDCCAG3 protein may be involved in modulation of TNF response, as well as in presentation of TNFRSF1A on the cell surface. The SDCCAG3 protein contains a region similar to the coiled-coil domain of the myosin tail. The same domain is present in the proteins related to the organelles/proteins trafficking, such as kinesin, Golgin-160 and dynein. Existing as four alternatively spliced isoforms, the SDCCAG3 gene is conserved in chimpanzee, bovine, mouse, rat, chicken and zebrafish, and maps to human chromosome 9q34.3. Chromosome 9 consists of about 145 million bases and 4% of the human genome and encodes nearly 900 genes. Hereditary hemorrhagic telangiectasia, which is characterized by harmful vascular defects, is associated with the chromosome 9 gene encoding endoglin protein, ENG. Familial dysautonomia is also associated with chromosome 9 through the gene IKBKAP. Chromosome 9 is partnered with chromosome 22 in the translocation leading to the aberrant production of BCR-ABL fusion protein often found in leukemias.

## CHROMOSOMAL LOCATION

Genetic locus: SDCCAG3 (human) mapping to 9q34.3; Sdccag3 (mouse) mapping to 2 A3.

## SOURCE

SDCCAG3 (E-16) is an affinity purified goat polyclonal antibody raised against a peptide mapping near the N-terminus of SDCCAG3 of human origin.

## PRODUCT

Each vial contains 200 µg IgG in 1.0 ml of PBS with < 0.1% sodium azide and 0.1% gelatin.

Blocking peptide available for competition studies, sc-169266 P, (100 µg peptide in 0.5 ml PBS containing < 0.1% sodium azide and 0.2% BSA).

## APPLICATIONS

SDCCAG3 (E-16) is recommended for detection of SDCCAG3 of mouse, rat and human origin by Western Blotting (starting dilution 1:200, dilution range 1:100-1:1000), immunoprecipitation [1-2 µg per 100-500 µg of total protein (1 ml of cell lysate)], immunofluorescence (starting dilution 1:50, dilution range 1:50-1:500) and solid phase ELISA (starting dilution 1:30, dilution range 1:30-1:3000); non cross-reactive with other SDCCAG family members.

SDCCAG3 (E-16) is also recommended for detection of SDCCAG3 in additional species, including equine, canine and porcine.

Suitable for use as control antibody for SDCCAG3 siRNA (h): sc-92784, SDCCAG3 siRNA (m): sc-153284, SDCCAG3 shRNA Plasmid (h): sc-92784-SH, SDCCAG3 shRNA Plasmid (m): sc-153284-SH, SDCCAG3 shRNA (h) Lentiviral Particles: sc-92784-V and SDCCAG3 shRNA (m) Lentiviral Particles: sc-153284-V.

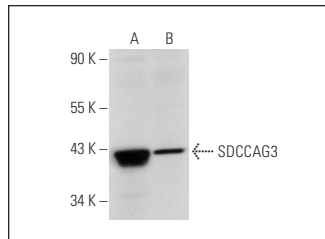
Molecular Weight of SDCCAG3 isoforms 1/2/3/4: 48/46/41/40 kDa.

Positive Controls: human pancreas extract: sc-363770, A549 cell lysate: sc-2413 or HEK293 whole cell lysate: sc-45136.

## RECOMMENDED SECONDARY REAGENTS

To ensure optimal results, the following support (secondary) reagents are recommended: 1) Western Blotting: use donkey anti-goat IgG-HRP: sc-2020 (dilution range: 1:2000-1:100,000) or Cruz Marker™ compatible donkey anti-goat IgG-HRP: sc-2033 (dilution range: 1:2000-1:5000), Cruz Marker™ Molecular Weight Standards: sc-2035, TBS Blotto A Blocking Reagent: sc-2333 and Western Blotting Luminol Reagent: sc-2048. 2) Immunoprecipitation: use Protein A/G PLUS-Agarose: sc-2003 (0.5 ml agarose/2.0 ml). 3) Immunofluorescence: use donkey anti-goat IgG-FITC: sc-2024 (dilution range: 1:100-1:400) or donkey anti-goat IgG-TR: sc-2783 (dilution range: 1:100-1:400) with UltraCruz™ Mounting Medium: sc-24941.

## DATA



SDCCAG3 (E-16): sc-169266. Western blot analysis of SDCCAG3 expression in A549 (A) and HEK293 (B) whole cell lysates.

## STORAGE

Store at 4° C, **\*\*DO NOT FREEZE\*\***. Stable for one year from the date of shipment. Non-hazardous. No MSDS required.

## RESEARCH USE

For research use only, not for use in diagnostic procedures.

## PROTOCOLS

See our web site at [www.scbt.com](http://www.scbt.com) or our catalog for detailed protocols and support products.

**MONOS**  
Satisfaction  
Guaranteed

Try **SDCCAG3 (E-2): sc-398909**, our highly recommended monoclonal alternative to SDCCAG3 (E-16).