

p-Tau (Thr 548): sc-16934

BACKGROUND

Tau can be phosphorylated by several protein kinases. Phosphorylation by Tau protein kinase II at Serine 404 is primarily responsible for the functional loss of Tau-mediated tubulin polymerization. In addition, phosphorylation of microtubule-associated Tau results in the dissociation of Tau from the microtubules and tubulin depolymerization. Serine 412 of Tau is modified by Tau protein kinase I/glycogen synthase kinase-3 beta (TPKI/GSK-3 β) to disrupt neuronal metabolism in anatomical areas vulnerable to Alzheimer's disease. TPKI/GSK-3 β is expressed primarily in neurons and especially in neurites early in development, whereafter the distribution is concentrated mostly in the cell soma and the proximal neurite region.

CHROMOSOMAL LOCATION

Genetic locus: MAPT (human) mapping to 17q21.31; Mapt (mouse) mapping to 11 E1.

SOURCE

p-Tau (Thr 548) is available as either goat (sc-16934) or rabbit (sc-16934-R) polyclonal affinity purified antibody raised against a short amino acid sequence containing phosphorylated Thr 548 of Tau of human origin.

PRODUCT

Each vial contains 200 μ g IgG in 1.0 ml of PBS with < 0.1% sodium azide and 0.1% gelatin.

Blocking peptide available for competition studies, sc-16934 P, (100 μ g peptide in 0.5 ml PBS containing < 0.1% sodium azide and 0.2% BSA).

STORAGE

Store at 4° C, ****DO NOT FREEZE****. Stable for one year from the date of shipment. Non-hazardous. No MSDS required.

APPLICATIONS

p-Tau (Thr 548) is recommended for detection of Thr 548 phosphorylated Tau of mouse, rat and human origin by Western Blotting (starting dilution 1:200, dilution range 1:100-1:1000), immunofluorescence (starting dilution 1:50, dilution range 1:50-1:500), immunohistochemistry (including paraffin-embedded sections) (starting dilution 1:50, dilution range 1:50-1:500) and solid phase ELISA (starting dilution 1:30, dilution range 1:30-1:3000).

p-Tau (Ser 739) is also recommended for detection of correspondingly phosphorylated Tau in additional species, including equine, canine, bovine, porcine and avian.

Suitable for use as control antibody for Tau siRNA (h): sc-36614, Tau siRNA (m): sc-36615, Tau siRNA (r): sc-61900, Tau shRNA Plasmid (h): sc-36614-SH, Tau shRNA Plasmid (m): sc-36615-SH, Tau shRNA Plasmid (r): sc-61900-SH, Tau shRNA (h) Lentiviral Particles: sc-36614-V, Tau shRNA (m) Lentiviral Particles: sc-36615-V and Tau shRNA (r) Lentiviral Particles: sc-61900-V.

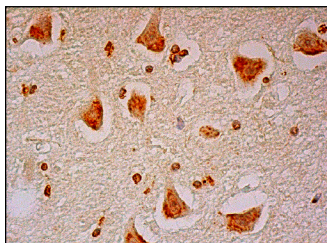
Molecular Weight of p-Tau: 46-80 kDa.

Positive Controls: mouse brain extract: sc-2253, rat brain extract: sc-2392 or SK-N-SH cell lysate: sc-2410.

RECOMMENDED SECONDARY REAGENTS

To ensure optimal results, the following support (secondary) reagents are recommended: 1) Western Blotting: for goat primary antibody (sc-16934): use donkey anti-goat IgG-HRP: sc-2020 (dilution range: 1:2000-1:100,000) or Cruz Marker™ compatible donkey anti-goat IgG-HRP: sc-2033 (dilution range: 1:2000-1:5000), for rabbit primary antibody (sc-16934-R): use goat anti-rabbit IgG-HRP: sc-2004 (dilution range: 1:2000-1:100,000) or Cruz Marker™ compatible goat anti-rabbit IgG-HRP: sc-2030 (dilution range: 1:2000-1:5000), Cruz Marker™ Molecular Weight Standards: sc-2035, TBS Blotto B Blocking Reagent: sc-2335 (use 50 mM NaF, sc-24988, as diluent), Western Blotting Luminol Reagent: sc-2048 and Lambda Phosphatase: sc-200312A. 2) Immunofluorescence: for goat primary antibody (sc-16934): use donkey anti-goat IgG-FITC: sc-2024 (dilution range: 1:100-1:400) or donkey anti-goat IgG-TR: sc-2783 (dilution range: 1:100-1:400) with UltraCruz™ Mounting Medium: sc-24941, for rabbit primary antibody (sc-16934-R): use goat anti-rabbit IgG-FITC: sc-2012 (dilution range: 1:100-1:400) or goat anti-rabbit IgG-TR: sc-2780 (dilution range: 1:100-1:400) with UltraCruz™ Mounting Medium: sc-24941. 3) Immunohistochemistry: for goat primary antibody (sc-16934): use ImmunoCruz™: sc-2053 or ABC: sc-2023 goat IgG Staining Systems, for rabbit primary antibody (sc-16934-R): use ImmunoCruz™: sc-2051 or ABC: sc-2018 rabbit IgG Staining Systems.

DATA



p-Tau (Thr 548): sc-16934. Immunoperoxidase staining of formalin fixed, paraffin-embedded human hippocampus tissue showing nuclear and cytoplasmic staining of neuronal cells and nuclear staining of glial cells.

RESEARCH USE

For research use only, not for use in diagnostic procedures.

PROTOCOLS

See our web site at www.scbt.com or our catalog for detailed protocols and support products.