

# p-Tau (Ser 641): sc-16942

## BACKGROUND

Tau, also known as MAPT (microtubule-associated protein tau), MAPTL, MTBT1 or TAU, is a 758 amino acid protein that localizes to the cytoplasm, as well as to the cytoskeleton and the cell membrane, and contains 4 Tau/MAPT repeats. Expressed in neuronal tissue and existing as multiple alternatively spliced isoforms, Tau functions to promote microtubule assembly and stability and is thought to be involved in the maintenance of neuronal polarity. Tau may also link microtubules with neural plasma membrane components and, in addition to its role in microtubule stability, is also necessary for cytoskeletal plasticity. Tau is highly subject to a variety of post-translational modifications, including phosphorylation on serine and threonine residues, polyubiquitination (and subsequent proteasomal degradation) and glycation of specific Tau isoforms. Defects in the gene encoding Tau are associated with Alzheimers disease, pallido-ponto-nigral degeneration (PPND), corticobasal degeneration (CBD) and progressive supranuclear palsy (PSP).

## CHROMOSOMAL LOCATION

Genetic locus: MAPT (human) mapping to 17q21.31; Mapt (mouse) mapping to 11 E1.

## SOURCE

p-Tau (Ser 641) is available as either goat (sc-16942) or rabbit (sc-16942-R) polyclonal antibody raised against a short amino acid sequence containing Ser 641 phosphorylated Tau of human origin.

## PRODUCT

Each vial contains 200 µg IgG in 1.0 ml of PBS with < 0.1% sodium azide and 0.1% gelatin.

Blocking peptide available for competition studies, sc-16942 P, (100 µg peptide in 0.5 ml PBS containing < 0.1% sodium azide and 0.2% BSA).

## APPLICATIONS

p-Tau (Ser 641) is recommended for detection of Ser 641 phosphorylated Tau of mouse, rat and human origin by Western Blotting (starting dilution 1:200, dilution range 1:100-1:1000), immunofluorescence (starting dilution 1:50, dilution range 1:50-1:500), immunohistochemistry (including paraffin-embedded sections) (starting dilution 1:50, dilution range 1:50-1:500) and solid phase ELISA (starting dilution 1:30, dilution range 1:30-1:3000).

p-Tau (Ser 641) is also recommended for detection of correspondingly phosphorylated Tau in additional species, including equine, canine, bovine, porcine and avian.

Suitable for use as control antibody for Tau siRNA (h): sc-36614, Tau siRNA (m): sc-36615, Tau siRNA (r): sc-61900, Tau shRNA Plasmid (h): sc-36614-SH, Tau shRNA Plasmid (m): sc-36615-SH, Tau shRNA Plasmid (r): sc-61900-SH, Tau shRNA (h) Lentiviral Particles: sc-36614-V, Tau shRNA (m) Lentiviral Particles: sc-36615-V and Tau shRNA (r) Lentiviral Particles: sc-61900-V.

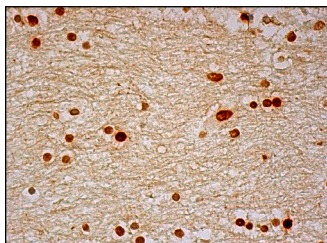
Molecular Weight of p-Tau: 46-80 kDa.

Positive Controls: mouse brain extract: sc-2253, SK-N-SH cell lysate: sc-2410 or rat brain extract: sc-2392.

## RECOMMENDED SECONDARY REAGENTS

To ensure optimal results, the following support (secondary) reagents are recommended: 1) Western Blotting: for goat primary antibody (sc-16942): use donkey anti-goat IgG-HRP: sc-2020 (dilution range: 1:2000-1:100,000) or Cruz Marker™ compatible donkey anti-goat IgG-HRP: sc-2033 (dilution range: 1:2000-1:5000), for rabbit primary antibody (sc-16942-R): use goat anti-rabbit IgG-HRP: sc-2004 (dilution range: 1:2000-1:100,000) or Cruz Marker™ compatible goat anti-rabbit IgG-HRP: sc-2030 (dilution range: 1:2000-1:5000), Cruz Marker™ Molecular Weight Standards: sc-2035, TBS Blotto B Blocking Reagent: sc-2335 (use 50 mM NaF, sc-24988, as diluent), Western Blotting Luminol Reagent: sc-2048 and Lambda Phosphatase: sc-200312A. 2) Immunofluorescence: for goat primary antibody (sc-16942): use donkey anti-goat IgG-FITC: sc-2024 (dilution range: 1:100-1:400) or donkey anti-goat IgG-TR: sc-2783 (dilution range: 1:100-1:400) with UltraCruz™ Mounting Medium: sc-24941, for rabbit primary antibody (sc-16942-R): use goat anti-rabbit IgG-FITC: sc-2012 (dilution range: 1:100-1:400) or goat anti-rabbit IgG-TR: sc-2780 (dilution range: 1:100-1:400) with UltraCruz™ Mounting Medium: sc-24941 3) Immunohistochemistry: for goat primary antibody (sc-16942): use ImmunoCruz™: sc-2053 or ABC: sc-2023 goat IgG Staining Systems, for rabbit primary antibody (sc-16942-R): use ImmunoCruz™: sc-2051 or ABC: sc-2018 rabbit IgG Staining Systems.

## DATA



p-Tau (Ser 641): sc-16942. Immunoperoxidase staining of formalin fixed, paraffin-embedded human lateral ventricle tissue showing nuclear staining of neuronal cells and glial cells.

## STORAGE

Store at 4° C, **\*\*DO NOT FREEZE\*\***. Stable for one year from the date of shipment. Non-hazardous. No MSDS required.

## RESEARCH USE

For research use only, not for use in diagnostic procedures.

## PROTOCOLS

See our web site at [www.scbt.com](http://www.scbt.com) or our catalog for detailed protocols and support products.