

Tctex5 (E-15): sc-169544

BACKGROUND

Tctex5, also known as PPP1R11 (protein phosphatase 1, regulatory (inhibitor subunit 11), HCGV or TCTE5, is a 126 amino acid protein that is expressed in a variety of both adult and fetal tissues. Tctex5 functions as an inhibitor of PP1 (protein phosphatase 1), specifically exhibiting a sensitivity toward the metal-independent and metal-dependent forms of PP1. Sharing 87% sequence similarity with its mouse counterpart, Tctex5 is thought to be evolutionarily conserved throughout animal evolution, particularly between rat, bovine, canine, rabbit and human. The gene encoding Tctex5 maps to human chromosome 6, which contains 170 million base pairs and comprises nearly 6% of the human genome. Deletion of a portion of the q arm of chromosome 6 is associated with early onset intestinal cancer, suggesting the presence of a cancer susceptibility locus. Additionally, Porphyria cutanea tarda, Parkinson's disease, Stickler syndrome and a susceptibility to bipolar disorder are all associated with genes that map to chromosome 6.

REFERENCES

1. Amadou, C., Ribouchon, M.T., Mattei, M.G., Jenkins, N.A., Gilbert, D.J., Copeland, N.G., Avoustin, P. and Pontarotti, P. 1995. Localization of new genes and markers to the distal part of the human major histocompatibility complex (MHC) region and comparison with the mouse: new insights into the evolution of mammalian genomes. *Genomics* 26: 9-20.
2. Lepourcelet, M., Andrieux, N., Giffon, T., Pichon, L., Hampe, A., Galibert, F. and Mosser, J. 1996. Systematic sequencing of the human HLA-A/HLA-F region: establishment of a cosmid contig and identification of a new gene cluster within 37 kb of sequence. *Genomics* 37: 316-326.
3. Giffon, T., Lepourcelet, M., Pichon, L., Jezequel, P., Bouric, P., Carn, G., Pontarotti, P., Gall, J.Y. and David, V. 1996. Cloning of a human homologue of the mouse Tctex-5 gene within the MHC class I region. *Immunogenetics* 44: 331-339.
4. Zhang, J., Zhang, L., Zhao, S. and Lee, E.Y. 1998. Identification and characterization of the human HCG V gene product as a novel inhibitor of protein phosphatase-1. *Biochemistry* 37: 16728-16734.

CHROMOSOMAL LOCATION

Genetic locus: PPP1R11 (human) mapping to 6p22.1; Ppp1r11 (mouse) mapping to 17 B1.

SOURCE

Tctex5 (E-15) is an affinity purified goat polyclonal antibody raised against a peptide mapping within an internal region of Tctex5 of human origin.

PRODUCT

Each vial contains 200 µg IgG in 1.0 ml of PBS with < 0.1% sodium azide and 0.1% gelatin.

Blocking peptide available for competition studies, sc-169544 P, (100 µg peptide in 0.5 ml PBS containing < 0.1% sodium azide and 0.2% BSA).

RESEARCH USE

For research use only, not for use in diagnostic procedures.

APPLICATIONS

Tctex5 (E-15) is recommended for detection of Tctex5 of mouse, rat and human origin by Western Blotting (starting dilution 1:200, dilution range 1:100-1:1000), immunoprecipitation [1-2 µg per 100-500 µg of total protein (1 ml of cell lysate)], immunofluorescence (starting dilution 1:50, dilution range 1:50-1:500) and solid phase ELISA (starting dilution 1:30, dilution range 1:30-1:3000); non cross-reactive with other Tctex family members.

Tctex5 (E-15) is also recommended for detection of Tctex5 in additional species, including equine, canine, bovine and porcine.

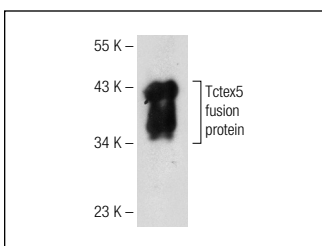
Suitable for use as control antibody for Tctex5 siRNA (h): sc-95416, Tctex5 siRNA (m): sc-154152, Tctex5 shRNA Plasmid (h): sc-95416-SH, Tctex5 shRNA Plasmid (m): sc-154152-SH, Tctex5 shRNA (h) Lentiviral Particles: sc-95416-V and Tctex5 shRNA (m) Lentiviral Particles: sc-154152-V.

Molecular Weight of Tctex5: 23 kDa.

RECOMMENDED SECONDARY REAGENTS

To ensure optimal results, the following support (secondary) reagents are recommended: 1) Western Blotting: use donkey anti-goat IgG-HRP: sc-2020 (dilution range: 1:2000-1:100,000) or Cruz Marker™ compatible donkey anti-goat IgG-HRP: sc-2033 (dilution range: 1:2000-1:5000), Cruz Marker™ Molecular Weight Standards: sc-2035, TBS Blotto A Blocking Reagent: sc-2333 and Western Blotting Luminol Reagent: sc-2048. 2) Immunoprecipitation: use Protein A/G PLUS-Agarose: sc-2003 (0.5 ml agarose/2.0 ml). 3) Immunofluorescence: use donkey anti-goat IgG-FITC: sc-2024 (dilution range: 1:100-1:400) or donkey anti-goat IgG-TR: sc-2783 (dilution range: 1:100-1:400) with UltraCruz™ Mounting Medium: sc-24941.

DATA



Tctex5 (E-15): sc-169544. Western blot analysis of human recombinant Tctex5 fusion protein.

STORAGE

Store at 4° C, ****DO NOT FREEZE****. Stable for one year from the date of shipment. Non-hazardous. No MSDS required.



Try **Tctex5 (D-9): sc-376034**, our highly recommended monoclonal alternative to Tctex5 (E-15).