

TRB-2 (G-12): sc-169663

BACKGROUND

TRB-2 (tribbles homolog 2), also known as TRIB2, C5FW or GS3955, is a cytoplasmic pro-apoptotic protein that belongs to the Tribbles subfamily of the serine/threonine protein kinase family. Members of the Tribbles subfamily, namely TRB-1, TRB-2 and TRB-3, contain a protein kinase-like or TRB domain that lacks the active site lysine and does not appear to display kinase activity. TRB proteins are induced by mitogens and interact with and are stabilized by MAPKs. TRB proteins play an important function in the MAP kinase pathway, as is demonstrated by the inhibition of MAPK signaling in response to both over- and underexpression of TRB proteins. TRB-1 is widely expressed with highest levels found in bone marrow, pancreas, skeletal muscle, peripheral blood leukocytes and thyroid gland; TRB-2 is predominantly expressed in peripheral blood leukocytes; and TRB-3 is found at highest levels in pancreas, bone marrow and peripheral blood leukocytes.

CHROMOSOMAL LOCATION

Genetic locus: TRIB2 (human) mapping to 2p24.3; Trib2 (mouse) mapping to 12 A1.1.

SOURCE

TRB-2 (G-12) is an affinity purified goat polyclonal antibody raised against a peptide mapping within an internal region of TRB-2 of human origin.

PRODUCT

Each vial contains 200 µg IgG in 1.0 ml of PBS with < 0.1% sodium azide and 0.1% gelatin.

Blocking peptide available for competition studies, sc-169663 P, (100 µg peptide in 0.5 ml PBS containing < 0.1% sodium azide and 0.2% BSA).

STORAGE

Store at 4° C, ****DO NOT FREEZE****. Stable for one year from the date of shipment. Non-hazardous. No MSDS required.

APPLICATIONS

TRB-2 (G-12) is recommended for detection of TRB-2 of mouse, rat and human origin by Western Blotting (starting dilution 1:200, dilution range 1:100-1:1000), immunoprecipitation [1-2 µg per 100-500 µg of total protein (1 ml of cell lysate)], immunofluorescence (starting dilution 1:50, dilution range 1:50-1:500) and solid phase ELISA (starting dilution 1:30, dilution range 1:30-1:3000); non cross-reactive with TRB-1 or TRB-3.

TRB-2 (G-12) is also recommended for detection of TRB-2 in additional species, including equine, canine, bovine and porcine.

Suitable for use as control antibody for TRB-2 siRNA (h): sc-94644, TRB-2 siRNA (m): sc-154621, TRB-2 shRNA Plasmid (h): sc-94644-SH, TRB-2 shRNA Plasmid (m): sc-154621-SH, TRB-2 shRNA (h) Lentiviral Particles: sc-94644-V and TRB-2 shRNA (m) Lentiviral Particles: sc-154621-V.

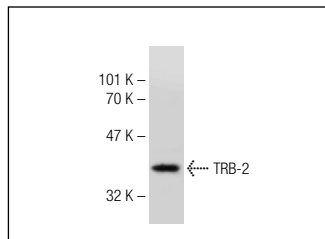
Molecular Weight of TRB-2: 37 kDa.

Positive Controls: Jurkat whole cell lysate: sc-2204 or WEHI-3 cell lysate: sc-3815.

RECOMMENDED SECONDARY REAGENTS

To ensure optimal results, the following support (secondary) reagents are recommended: 1) Western Blotting: use donkey anti-goat IgG-HRP: sc-2020 (dilution range: 1:2000-1:100,000) or Cruz Marker™ compatible donkey anti-goat IgG-HRP: sc-2033 (dilution range: 1:2000-1:5000), Cruz Marker™ Molecular Weight Standards: sc-2035, TBS Blotto A Blocking Reagent: sc-2333 and Western Blotting Luminol Reagent: sc-2048. 2) Immunoprecipitation: use Protein A/G PLUS-Agarose: sc-2003 (0.5 ml agarose/2.0 ml). 3) Immunofluorescence: use donkey anti-goat IgG-FITC: sc-2024 (dilution range: 1:100-1:400) or donkey anti-goat IgG-TR: sc-2783 (dilution range: 1:100-1:400) with UltraCruz™ Mounting Medium: sc-24941.

DATA



TRB-2 (G-12): sc-169663. Western blot analysis of TRB-2 expression in WEHI-3 whole cell lysate.

RESEARCH USE

For research use only, not for use in diagnostic procedures.

PROTOCOLS

See our web site at www.scbt.com or our catalog for detailed protocols and support products.

MONOS
Satisfaction
Guaranteed

Try **TRB-2 (F-5): sc-376776** or **TRB-2 (B-06): sc-100878**, our highly recommended monoclonal alternatives to TRB-2 (G-12).