

# XAGE-3 (K-13): sc-169823

## BACKGROUND

XAGE-3 (X antigen family, member 3), also known as PLAC6 (placenta-specific gene 6 protein), GAGED4 (G antigen family D member 4), CT12.3a (cancer/testis antigen 12.3), CT12.3b or pp9012, is a 111 amino acid protein that belongs to the GAGE family and XAGE subfamily. XAGE-3 is thought to play a role in inhibition of cancer cell growth and is expressed primarily in placenta and fetal liver and spleen. The gene encoding XAGE-3 maps to human chromosome X, which consists of about 153 million base pairs and nearly 1,000 genes. The combination of a X and Y chromosome lead to normal male development while two copies of X lead to normal female development. There are a number of conditions related to an unusual number and combination of sex chromosomes being inherited, including Turner's syndrome, Klinefelter's syndrome and Triple X syndrome. Color blindness, hemophilia, and Duchenne muscular dystrophy are well known X chromosome-linked conditions which affect males more frequently as males carry a single X chromosome.

## REFERENCES

1. Risco, J., Pardo, C., Figuera, E., Pellicer, F. and Año, T. 1992. Jugular phlebotasia. Apropos a case. *Acta Otorrinolaringol. Esp.* 43: 67-69.
2. Brinkmann, U., Vasmatzis, G., Lee, B. and Pastan, I. 1999. Novel genes in the PAGE and GAGE family of tumor antigens found by homology walking in the dbEST database. *Cancer Res.* 59: 1445-1448.
3. Gianfrancesco, F., Sanges, R., Esposito, T., Tempesta, S., Rao, E., Rappold, G., Archidiacono, N., Graves, J.A., Forabosco, A. and D'Urso, M. 2001. Differential divergence of three human pseudoautosomal genes and their mouse homologs: implications for sex chromosome evolution. *Genome Res.* 11: 2095-2100.
4. Bernardino-Sgherri, J., Flagiello, D. and Dutrillaux, B. 2002. Overall DNA methylation and chromatin structure of normal and abnormal X chromosomes. *Cytogenet. Genome Res.* 99: 85-91.
5. Zendman, A.J., Van Kraats, A.A., Weidle, U.H., Ruiter, D.J. and Van Muijen, G.N. 2002. The XAGE family of cancer/testis-associated genes: alignment and expression profile in normal tissues, melanoma lesions and Ewing's sarcoma. *Int. J. Cancer* 99: 361-369.
6. Bojesen, A., Kristensen, K., Birkebaek, N.H., Fedder, J., Mosekilde, L., Bennett, P., Laurberg, P., Frystyk, J., Flyvbjerg, A., Christiansen, J.S. and Gravholt, C.H. 2006. The metabolic syndrome is frequent in Klinefelter's syndrome and is associated with abdominal obesity and hypogonadism. *Diabetes Care* 29: 1591-1598.
7. Maggio, M.C., Liotta, A., De Grazia, E., Cimador, M., Di Pace, R. and Corsello, G. 2007. Polycystic ovary and gonadoblastoma in Turner's syndrome. *Minerva Pediatr.* 59: 397-401.

## CHROMOSOMAL LOCATION

Genetic locus: XAGE3 (human) mapping to Xp11.22.

## STORAGE

Store at 4° C, **\*\*DO NOT FREEZE\*\***. Stable for one year from the date of shipment. Non-hazardous. No MSDS required.

## SOURCE

XAGE-3 (K-13) is an affinity purified goat polyclonal antibody raised against a peptide mapping within an internal region of XAGE-3 of human origin.

## PRODUCT

Each vial contains 200 µg IgG in 1.0 ml of PBS with < 0.1% sodium azide and 0.1% gelatin.

Blocking peptide available for competition studies, sc-169823 P, (100 µg peptide in 0.5 ml PBS containing < 0.1% sodium azide and 0.2% BSA).

## APPLICATIONS

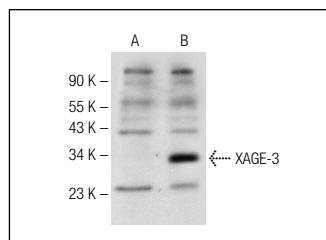
XAGE-3 (K-13) is recommended for detection of XAGE-3 of human origin by Western Blotting (starting dilution 1:200, dilution range 1:100-1:1000), immunoprecipitation [1-2 µg per 100-500 µg of total protein (1 ml of cell lysate)], immunofluorescence (starting dilution 1:50, dilution range 1:50-1:500) and solid phase ELISA (starting dilution 1:30, dilution range 1:30-1:3000); non cross-reactive with other XAGE family members.

Suitable for use as control antibody for XAGE-3 siRNA (h): sc-90960, XAGE-3 shRNA Plasmid (h): sc-90960-SH and XAGE-3 shRNA (h) Lentiviral Particles: sc-90960-V.

Molecular Weight of XAGE-3: 12 kDa.

Positive Controls: XAGE-3 (h): 293T Lysate: sc-370723.

## DATA



XAGE-3 (K-13): sc-169823. Western blot analysis of XAGE-3 expression in non-transfected: sc-117752 (A) and human XAGE-3 transfected: sc-370723 (B) 293T whole cell lysates.

## RESEARCH USE

For research use only, not for use in diagnostic procedures.

## PROTOCOLS

See our web site at [www.scbt.com](http://www.scbt.com) or our catalog for detailed protocols and support products.