

ASXL2 (V-17): sc-169972

BACKGROUND

ASXL2 (additional sex combs-like protein 2) is a 1,435 amino acid protein belonging to the Asx family. ASXL2 contains one PHD-type zinc finger and two Leu-Xaa-Xaa-Leu-Leu (LXXLL) motifs, which may be required for an association with nuclear receptors. ASXL2 is believed to be a Polycomb group (PcG) protein. PcG proteins act by forming multiprotein complexes, which are required to maintain the transcriptionally repressive state of homeotic genes throughout development. PcG proteins are not required to initiate repression, but to maintain it during later stages of development. They probably act via methylation of histones, rendering chromatin heritably changed in its expressibility. ASXL2 is localized to the nucleus and is expressed as two isoforms produced by alternative splicing.

REFERENCES

1. Fisher, C.L., Berger, J., Randazzo, F. and Brock, H.W. 2003. A human homolog of additional sex combs, additional sex combs-like 1, maps to chromosome 20q11. *Gene* 306: 115-126.
2. Katoh, M. and Katoh, M. 2003. Identification and characterization of ASXL2 gene in silico. *Int. J. Oncol.* 23: 845-850.
3. Katoh, M. and Katoh, M. 2004. Identification and characterization of ASXL3 gene in silico. *Int. J. Oncol.* 24: 1617-1622.
4. Katoh, M. and Katoh, M. 2004. Identification and characterization of human CXXC10 gene in silico. *Int. J. Oncol.* 25: 1193-1199.
5. Fisher, C.L., Randazzo, F., Humphries, R.K. and Brock, H.W. 2006. Characterization of Asxl1, a murine homolog of additional sex combs, and analysis of the Asx-like gene family. *Gene* 369: 109-118.
6. Cho, Y.S., Kim, E.J., Park, U.H., Sin, H.S. and Um, S.J. 2006. Additional sex comb-like 1 (ASXL1), in cooperation with SRC-1, acts as a ligand-dependent coactivator for retinoic acid receptor. *J. Biol. Chem.* 281: 17588-17598.

CHROMOSOMAL LOCATION

Genetic locus: ASXL2 (human) mapping to 2p23.3; Asxl2 (mouse) mapping to 12 A1.1.

SOURCE

ASXL2 (V-17) is an affinity purified goat polyclonal antibody raised against a peptide mapping within an internal region of ASXL2 of human origin.

PRODUCT

Each vial contains 200 µg IgG in 1.0 ml of PBS with < 0.1% sodium azide and 0.1% gelatin.

Blocking peptide available for competition studies, sc-169972 P, (100 µg peptide in 0.5 ml PBS containing < 0.1% sodium azide and 0.2% BSA).

STORAGE

Store at 4° C, ****DO NOT FREEZE****. Stable for one year from the date of shipment. Non-hazardous. No MSDS required.

APPLICATIONS

ASXL2 (V-17) is recommended for detection of ASXL2 of mouse, rat and human origin by Western Blotting (starting dilution 1:200, dilution range 1:100-1:1000), immunoprecipitation [1-2 µg per 100-500 µg of total protein (1 ml of cell lysate)], immunofluorescence (starting dilution 1:50, dilution range 1:50-1:500) and solid phase ELISA (starting dilution 1:30, dilution range 1:30-1:3000); non cross-reactive with ASXL1 or ASXL3.

ASXL2 (V-17) is also recommended for detection of ASXL2 in additional species, including equine, bovine and porcine.

Suitable for use as control antibody for ASXL2 siRNA (h): sc-94416, ASXL2 siRNA (m): sc-141311, ASXL2 shRNA Plasmid (h): sc-94416-SH, ASXL2 shRNA Plasmid (m): sc-141311-SH, ASXL2 shRNA (h) Lentiviral Particles: sc-94416-V and ASXL2 shRNA (m) Lentiviral Particles: sc-141311-V.

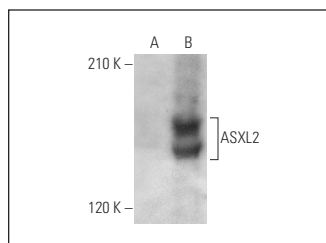
Molecular Weight of ASXL2: 154 kDa.

Positive Controls: ASXL2 (h): 293T Lysate: sc-374684 or Jurkat nuclear extract: sc-2132.

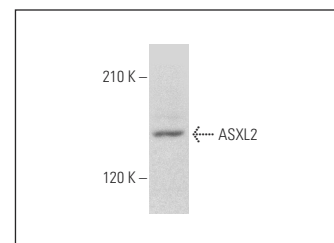
RECOMMENDED SECONDARY REAGENTS

To ensure optimal results, the following support (secondary) reagents are recommended: 1) Western Blotting: use donkey anti-goat IgG-HRP: sc-2020 (dilution range: 1:2000-1:100,000) or Cruz Marker™ compatible donkey anti-goat IgG-HRP: sc-2033 (dilution range: 1:2000-1:5000), Cruz Marker™ Molecular Weight Standards: sc-2035, TBS Blotto A Blocking Reagent: sc-2333 and Western Blotting Luminol Reagent: sc-2048. 2) Immunoprecipitation: use Protein A/G PLUS-Agarose: sc-2003 (0.5 ml agarose/2.0 ml). 3) Immunofluorescence: use donkey anti-goat IgG-FITC: sc-2024 (dilution range: 1:100-1:400) or donkey anti-goat IgG-TR: sc-2783 (dilution range: 1:100-1:400) with UltraCruz™ Mounting Medium: sc-24941.

DATA



ASXL2 (V-17): sc-169972. Western blot analysis of ASXL2 expression in non-transfected: sc-117752 (A) and human ASXL2 transfected: sc-374684 (B) 293T whole cell lysates.



ASXL2 (V-17): sc-169972. Western blot analysis of ASXL2 expression in Jurkat nuclear extract.

RESEARCH USE

For research use only, not for use in diagnostic procedures.

PROTOCOLS

See our web site at www.scbt.com or our catalog for detailed protocols and support products.