

BAT2L (C-14): sc-169981

BACKGROUND

BAT2L (BAT2-like 1), also known as HLA-B-associated transcript 2-like 1 or KIAA0515, is a 1,535 amino acid protein expressed as 4 isoforms produced by alternative splicing events. The gene that encodes BAT2L maps to human chromosome 9, which consists of about 145 million bases and 4% of the human genome, encoding nearly 900 genes. Considered to play a role in gender determination, deletion of the distal portion of 9p can lead to development of male to female sex reversal, the phenotype of a female with a male X,Y genotype. Hereditary hemorrhagic telangiectasia, which is characterized by harmful vascular defects, is associated with the chromosome 9 gene encoding endoglin protein, ENG. Familial dysautonomia is also associated with chromosome 9 through the gene IKBKAP. Notably, chromosome 9 encompasses the largest interferon family gene cluster. Chromosome 9 is partnered with chromosome 22 in the translocation leading to the aberrant production of Bcr-Abl fusion protein often found in leukemias.

REFERENCES

1. Humphray, S.J., et al. 2004. DNA sequence and analysis of human chromosome 9. *Nature* 429: 369-374.
2. Coppo, P., et al. 2006. Bcr-Abl activates Stat3 via JAK and MEK pathways in human cells. *Br. J. Haematol.* 134: 171-179.
3. Zheng, X., et al. 2006. Bcr and its mutants, the reciprocal t(9;22)-associated Abl/Bcr fusion proteins, differentially regulate the cytoskeleton and cell motility. *BMC Cancer* 7: 262.
4. Burmeister, T., et al. 2007. Atypical Bcr-Abl mRNA transcripts in adult acute lymphoblastic leukemia. *Haematologica* 92: 1699-1702.
5. Cottin, V., et al. 2007. Pulmonary vascular manifestations of hereditary hemorrhagic telangiectasia (Rendu-Osler disease). *Respiration* 74: 361-378.
6. Fernandez-L, A., et al. 2007. Gene expression fingerprinting for human hereditary hemorrhagic telangiectasia. *Hum. Mol. Genet.* 16: 1515-1533.

CHROMOSOMAL LOCATION

Genetic locus: BAT2L1 (human) mapping to 9q34.11; Bat2l (mouse) mapping to 2 B.

SOURCE

BAT2L (C-14) is an affinity purified goat polyclonal antibody raised against a peptide mapping within an internal region of BAT2L of human origin.

PRODUCT

Each vial contains 200 µg IgG in 1.0 ml of PBS with < 0.1% sodium azide and 0.1% gelatin.

Blocking peptide available for competition studies, sc-169981 P, (100 µg peptide in 0.5 ml PBS containing < 0.1% sodium azide and 0.2% BSA).

RESEARCH USE

For research use only, not for use in diagnostic procedures.

APPLICATIONS

BAT2L (C-14) is recommended for detection of BAT2L of mouse, rat and human origin by Western Blotting (starting dilution 1:200, dilution range 1:100-1:1000), immunoprecipitation [1-2 µg per 100-500 µg of total protein (1 ml of cell lysate)], immunofluorescence (starting dilution 1:50, dilution range 1:50-1:500) and solid phase ELISA (starting dilution 1:30, dilution range 1:30-1:3000); non cross-reactive with BAT2.

Suitable for use as control antibody for BAT2L siRNA (h): sc-106875, BAT2L siRNA (m): sc-140410, BAT2L shRNA Plasmid (h): sc-106875-SH, BAT2L shRNA Plasmid (m): sc-140410-SH, BAT2L shRNA (h) Lentiviral Particles: sc-106875-V and BAT2L shRNA (m) Lentiviral Particles: sc-140410-V.

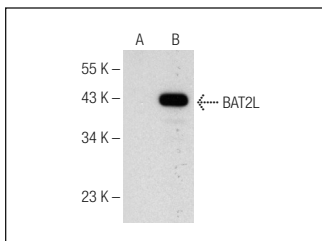
Molecular Weight of BAT2L: 166 kDa.

Positive Controls: BAT2L (h): 293T Lysate: sc-113073.

RECOMMENDED SECONDARY REAGENTS

To ensure optimal results, the following support (secondary) reagents are recommended: 1) Western Blotting: use donkey anti-goat IgG-HRP: sc-2020 (dilution range: 1:2000-1:100,000) or Cruz Marker™ compatible donkey anti-goat IgG-HRP: sc-2033 (dilution range: 1:2000-1:5000), Cruz Marker™ Molecular Weight Standards: sc-2035, TBS Blotto A Blocking Reagent: sc-2333 and Western Blotting Luminol Reagent: sc-2048. 2) Immunoprecipitation: use Protein A/G PLUS-Agarose: sc-2003 (0.5 ml agarose/2.0 ml). 3) Immunofluorescence: use donkey anti-goat IgG-FITC: sc-2024 (dilution range: 1:100-1:400) or donkey anti-goat IgG-TR: sc-2783 (dilution range: 1:100-1:400) with UltraCruz™ Mounting Medium: sc-24941.

DATA



BAT2L (C-14): sc-169981. Western blot analysis of BAT2L expression in non-transfected: sc-117752 (A) and human BAT2L transfected: sc-113073 (B) 293T whole cell lysates.

STORAGE

Store at 4° C, **DO NOT FREEZE**. Stable for one year from the date of shipment. Non-hazardous. No MSDS required.

MONOS
Satisfaction
Guaranteed

Try **BAT2L (D-2): sc-393604**, our highly recommended monoclonal alternative to BAT2L (C-14).