

BCL2L12 (E-13): sc-169990

BACKGROUND

Apoptosis is defined as a set of cascades which, when initiated, programs the cell to undergo lethal changes such as membrane blebbing, mitochondrial break down and DNA fragmentation. Bcl-2 is one among many key regulators of apoptosis, which are essential for proper development, tissue homeostasis and protection against foreign pathogens. Human Bcl-2 is an anti-apoptotic, membrane-associated oncoprotein that can promote cell survival through protein-protein interactions with other Bcl-2 related family members, such as the death suppressors Bcl-x_L, Mcl-1, Bcl-w and A1 or the death agonists Bax, Bak, Bik, Bad and Bid. Bcl-2 protein family members form hetero- or homodimers that act as apoptotic regulators that are involved in a variety of cellular activities. BCL2L12, also known as BPR, is a 334 amino acid protein belonging to the Bcl-2 family. Expressed as two isoforms produced by alternative splicing, BCL2L12 is present in prostate, breast, small intestine, pancreas, thymus, colon and spinal chord.

REFERENCES

- Scorilas, A., et al. 2001. Molecular cloning, physical mapping, and expression analysis of a novel gene, BCL2L12, encoding a proline-rich protein with a highly conserved BH2 domain of the Bcl-2 family. *Genomics* 72: 217-221.
- Hammond, P.W., et al. 2001. *In vitro* selection and characterization of Bcl-x_L-binding proteins from a mix of tissue-specific mRNA display libraries. *J. Biol. Chem.* 276: 20898-20906.
- Talieri, M., et al. 2003. Expression of BCL2L12, a new member of apoptosis-related genes, in breast tumors. *Thromb. Haemost.* 89: 1081-1088.
- Mathioudaki, K., et al. 2004. Expression analysis of BCL2L12, a new member of apoptosis-related genes, in colon cancer. *Biol. Chem.* 385: 779-783.
- Hong, Y., et al. 2008. Knockdown of BCL2L12 leads to cisplatin resistance in MDA-MB-231 breast cancer cells. *Biochim. Biophys. Acta* 1782: 649-657.

CHROMOSOMAL LOCATION

Genetic locus: BCL2L12 (human) mapping to 19q13.33; Bcl2l12 (mouse) mapping to 7 B4.

SOURCE

BCL2L12 (E-13) is an affinity purified goat polyclonal antibody raised against a peptide mapping near the C-terminus of BCL2L12 of human origin.

PRODUCT

Each vial contains 200 µg IgG in 1.0 ml of PBS with < 0.1% sodium azide and 0.1% gelatin.

Blocking peptide available for competition studies, sc-169990 P, (100 µg peptide in 0.5 ml PBS containing < 0.1% sodium azide and 0.2% BSA).

STORAGE

Store at 4° C, ****DO NOT FREEZE****. Stable for one year from the date of shipment. Non-hazardous. No MSDS required.

APPLICATIONS

BCL2L12 (E-13) is recommended for detection of BCL2L12 of mouse, rat and human origin by Western Blotting (starting dilution 1:200, dilution range 1:100-1:1000), immunoprecipitation [1-2 µg per 100-500 µg of total protein (1 ml of cell lysate)], immunofluorescence (starting dilution 1:50, dilution range 1:50-1:500) and solid phase ELISA (starting dilution 1:30, dilution range 1:30-1:3000).

BCL2L12 (E-13) is also recommended for detection of BCL2L12 in additional species, including bovine.

Suitable for use as control antibody for BCL2L12 siRNA (h): sc-97620, BCL2L12 siRNA (m): sc-141674, BCL2L12 shRNA Plasmid (h): sc-97620-SH, BCL2L12 shRNA Plasmid (m): sc-141674-SH, BCL2L12 shRNA (h) Lentiviral Particles: sc-97620-V and BCL2L12 shRNA (m) Lentiviral Particles: sc-141674-V.

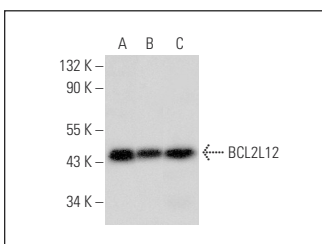
Molecular Weight of BCL2L12: 37 kDa.

Positive Controls: MCF7 whole cell lysate: sc-2206, PC-3 cell lysate: sc-2220 or RT-4 whole cell lysate: sc-364257.

RECOMMENDED SECONDARY REAGENTS

To ensure optimal results, the following support (secondary) reagents are recommended: 1) Western Blotting: use donkey anti-goat IgG-HRP: sc-2020 (dilution range: 1:2000-1:100,000) or Cruz Marker™ compatible donkey anti-goat IgG-HRP: sc-2033 (dilution range: 1:2000-1:5000), Cruz Marker™ Molecular Weight Standards: sc-2035, TBS Blotto A Blocking Reagent: sc-2333 and Western Blotting Luminol Reagent: sc-2048. 2) Immunoprecipitation: use Protein A/G PLUS-Agarose: sc-2003 (0.5 ml agarose/2.0 ml). 3) Immunofluorescence: use donkey anti-goat IgG-FITC: sc-2024 (dilution range: 1:100-1:400) or donkey anti-goat IgG-TR: sc-2783 (dilution range: 1:100-1:400) with UltraCruz™ Mounting Medium: sc-24941.

DATA



BCL2L12 (E-13): sc-169990. Western blot analysis of BCL2L12 expression in MCF7 (A), PC-3 (B) and RT-4 (C) whole cell lysates.

RESEARCH USE

For research use only, not for use in diagnostic procedures.

PROTOCOLS

See our web site at www.scbt.com or our catalog for detailed protocols and support products.