

LMP7A (L-20): sc-17069

BACKGROUND

The eukaryotic multi-catalytic proteinase complex, otherwise known as the proteasome, is present in both the nucleus and cytoplasm of cells and contains at least 15 nonidentical subunits, which form a highly ordered ring-shaped structure. The proteasome is involved in an ATP/Ubiquitin-dependent proteolytic pathway and expresses at least five distinct proteolytic activities, including the cleavage of peptides after branched-chain amino acids or bulky hydrophobic amino acids. Two components of the proteasome are the low molecular mass proteins LMP2 and LMP7, which are thought to connect the proteasome to the MHC class-I antigen-processing pathway. Upon stimulation with IFN- γ , LMP2 and LMP7 displace housekeeping subunits in the proteasome and activate cytotoxic T cells (CTLs). LMP2 and LMP7 are produced as precursor proteins, which are processed to subunits that have the ability to complex with the proteasome. LMP2 is expressed as two alternatively spliced forms, LMP2.l and LMP2.s, in lymphoblastoid cell lines and in fibroblasts after IFN- γ stimulation. LMP7 is also expressed as two forms, LMP7A and LMP7B, also designated LMP7-E1 and E2, in several tissues.

CHROMOSOMAL LOCATION

Genetic locus: PSMB8 (human) mapping to 6p21.32.

SOURCE

LMP7A (L-20) is an affinity purified goat polyclonal antibody raised against a peptide mapping at the N-terminus of LMP7A of human origin.

PRODUCT

Each vial contains 200 μ g IgG in 1.0 ml of PBS with < 0.1% sodium azide and 0.1% gelatin.

Blocking peptide available for competition studies, sc-17069 P, (100 μ g peptide in 0.5 ml PBS containing < 0.1% sodium azide and 0.2% BSA).

APPLICATIONS

LMP7A (L-20) is recommended for detection of LMP7A of human origin by Western Blotting (starting dilution 1:200, dilution range 1:100-1:1000), immunofluorescence (starting dilution 1:50, dilution range 1:50-1:500), immunohistochemistry (including paraffin-embedded sections) (starting dilution 1:50, dilution range 1:50-1:500) and solid phase ELISA (starting dilution 1:30, dilution range 1:30-1:3000).

Suitable for use as control antibody for LMP7A siRNA (h): sc-42898, LMP7A shRNA Plasmid (h): sc-42898-SH and LMP7A shRNA (h) Lentiviral Particles: sc-42898-V.

Molecular Weight (predicted) of mature LMP7A: 23 kDa.

Molecular Weight (predicted) of LMP7A precursor: 30 kDa.

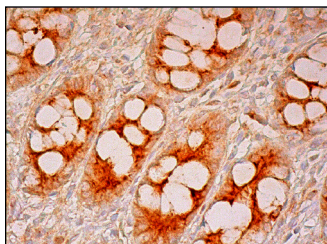
Molecular Weight (observed) of LMP7A: 43 kDa.

Positive Controls: CCRF-CEM cell lysate: sc-2225, HuT 78 whole cell lysate: sc-2208 or MOLT-4 cell lysate: sc-2233.

RECOMMENDED SECONDARY REAGENTS

To ensure optimal results, the following support (secondary) reagents are recommended: 1) Western Blotting: use donkey anti-goat IgG-HRP: sc-2020 (dilution range: 1:2000-1:100,000) or Cruz Marker™ compatible donkey anti-goat IgG-HRP: sc-2033 (dilution range: 1:2000-1:5000), Cruz Marker™ Molecular Weight Standards: sc-2035, TBS Blotto A Blocking Reagent: sc-2333 and Western Blotting Luminol Reagent: sc-2048. 2) Immunofluorescence: use donkey anti-goat IgG-FITC: sc-2024 (dilution range: 1:100-1:400) or donkey anti-goat IgG-TR: sc-2783 (dilution range: 1:100-1:400) with UltraCruz™ Mounting Medium: sc-24941. 3) Immunohistochemistry: use ImmunoCruz™: sc-2053 or ABC: sc-2023 goat IgG Staining Systems.

DATA



LMP7A (L-20): sc17069. Immunoperoxidase staining of formalin fixed, paraffin-embedded human rectum tissue showing cytoplasmic staining of glandular cells.

STORAGE

Store at 4° C, ****DO NOT FREEZE****. Stable for one year from the date of shipment. Non-hazardous. No MSDS required.

RESEARCH USE

For research use only, not for use in diagnostic procedures.

PROTOCOLS

See our web site at www.scbt.com or our catalog for detailed protocols and support products.



Try **LMP7 (A-12): sc-365699**, our highly recommended monoclonal alternative to LMP7A (L-20).