

BSEP (P-18): sc-17294

BACKGROUND

ATP-binding cassette (ABC) transporters are an evolutionary conserved family of proteins that catalyze the transport of molecules across extra- and intra-cellular membranes through the energy of ATP hydrolysis. ABC genes comprise seven subfamilies, designated ABC1, MDR/TAP, MRP, ALD, OABP, GCN20, and White. The secretion of bile salt molecules from blood into bile is a major driving force for bile formation. Bile salt export pump (BSEP) is a member of the MDR/TAP subfamily of ABC transporters that mediates the transport of bile acids across the hepatocyte canalicular membrane and regulates bile acid-dependent bile secretion. BSEP contains putative phosphorylation sites for protein kinase A, protein kinase C (PKC) and Ca²⁺-calmodulin dependent kinase II, whose regulation may be dependent on bile salt concentration.

CHROMOSOMAL LOCATION

Genetic locus: ABCB11 (human) mapping to 2q31.1; Abcb11 (mouse) mapping to 2 C2.

SOURCE

BSEP (P-18) is an affinity purified goat polyclonal antibody raised against a peptide mapping within an internal region of BSEP of mouse origin.

PRODUCT

Each vial contains 100 µg IgG in 1.0 ml of PBS with < 0.1% sodium azide and 0.1% gelatin.

Blocking peptide available for competition studies, sc-17294 P, (100 µg peptide in 0.5 ml PBS containing < 0.1% sodium azide and 0.2% BSA).

STORAGE

Store at 4° C, ****DO NOT FREEZE****. Stable for one year from the date of shipment. Non-hazardous. No MSDS required.

APPLICATIONS

BSEP (P-18) is recommended for detection of BSEP of mouse, rat and, to a lesser extent, human origin by Western Blotting (starting dilution 1:200, dilution range 1:100-1:1000), immunoprecipitation [1-2 µg per 100-500 µg of total protein (1 ml of cell lysate)], immunofluorescence (starting dilution 1:50, dilution range 1:50-1:500) and solid phase ELISA (starting dilution 1:30, dilution range 1:30-1:3000).

BSEP (P-18) is also recommended for detection of BSEP in additional species, including equine and canine.

Suitable for use as control antibody for BSEP siRNA (h): sc-41157, BSEP siRNA (m): sc-41158, BSEP shRNA Plasmid (h): sc-41157-SH, BSEP shRNA Plasmid (m): sc-41158-SH, BSEP shRNA (h) Lentiviral Particles: sc-41157-V and BSEP shRNA (m) Lentiviral Particles: sc-41158-V.

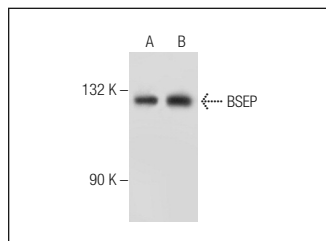
Molecular Weight of BSEP: 160-190 kDa.

Positive Controls: rat liver extract: sc-2395 or C3H/10T1/2 cell lysate: sc-3801.

RECOMMENDED SECONDARY REAGENTS

To ensure optimal results, the following support (secondary) reagents are recommended: 1) Western Blotting: use donkey anti-goat IgG-HRP: sc-2020 (dilution range: 1:2000-1:100,000) or Cruz Marker™ compatible donkey anti-goat IgG-HRP: sc-2033 (dilution range: 1:2000-1:5000), Cruz Marker™ Molecular Weight Standards: sc-2035, TBS Blotto A Blocking Reagent: sc-2333 and Western Blotting Luminol Reagent: sc-2048. 2) Immunoprecipitation: use Protein A/G PLUS-Agarose: sc-2003 (0.5 ml agarose/2.0 ml). 3) Immunofluorescence: use donkey anti-goat IgG-FITC: sc-2024 (dilution range: 1:100-1:400) or donkey anti-goat IgG-TR: sc-2783 (dilution range: 1:100-1:400) with UltraCruz™ Mounting Medium: sc-24941.

DATA



BSEP (P-18): sc-17294. Western blot analysis of BSEP expression in K-562 (A) and U266 (B) whole cell lysates.

SELECT PRODUCT CITATIONS

1. Ruiz, M.L., et al. 2005. Mechanisms involved in spironolactone-induced cholestasis in the rat. Role of multidrug resistance-associated protein 2. *Biochem. Pharmacol.* 69: 531-539.
2. Kong, J., et al. 2014. Enhancement of interaction of BSEP and HAX-1 on the canalicular membrane of hepatocytes in a mouse model of cholesterol cholelithiasis. *Int. J. Clin. Exp. Pathol.* 7: 1644-1650.

RESEARCH USE

For research use only, not for use in diagnostic procedures.

PROTOCOLS

See our web site at www.scbt.com or our catalog for detailed protocols and support products.

MONOS
Satisfaction
Guaranteed

Try **BSEP (F-6): sc-74500**, our highly recommended monoclonal alternative to BSEP (P-18). Also, for AC, HRP, FITC, PE, Alexa Fluor® 488 and Alexa Fluor® 647 conjugates, see **BSEP (F-6): sc-74500**.