

Sox-13 (L-19): sc-17350

BACKGROUND

Sox genes comprise a family of genes that are related to the mammalian sex determining gene SRY. These genes similarly contain sequences that encode for the HMG-box domain, which is responsible for the sequence-specific DNA-binding activity. Sox genes encode putative transcriptional regulators implicated in the decision of cell fates during development and the control of diverse developmental processes. The highly complex group of Sox genes cluster at a minimum of 40 different loci that rapidly diverged in various animal lineages. At present 30 Sox genes have been identified, and members of this family have been shown to be conserved during evolution and to play key roles during animal development. Some are involved in human diseases, including sex reversal.

CHROMOSOMAL LOCATION

Genetic locus: SOX13 (human) mapping to 1q32.1; Sox13 (mouse) mapping to 1 E4.

SOURCE

Sox-13 (L-19) is an affinity purified goat polyclonal antibody raised against a peptide mapping within an internal region of Sox-13 of human origin.

PRODUCT

Each vial contains 200 µg IgG in 1.0 ml of PBS with < 0.1% sodium azide and 0.1% gelatin. Also available as TransCruz reagent for Gel Supershift and ChIP applications, sc-17350 X, 200 µg/0.1 ml.

Blocking peptide available for competition studies, sc-17350 P, (100 µg peptide in 0.5 ml PBS containing < 0.1% sodium azide and 0.2% BSA).

STORAGE

Store at 4° C, ****DO NOT FREEZE****. Stable for one year from the date of shipment. Non-hazardous. No MSDS required.

APPLICATIONS

Sox-13 (L-19) is recommended for detection of Sox-13 of mouse, rat and human origin by Western Blotting (starting dilution 1:200, dilution range 1:100-1:1000), immunofluorescence (starting dilution 1:50, dilution range 1:50-1:500), immunohistochemistry (including paraffin-embedded sections) (starting dilution 1:50, dilution range 1:50-1:500) and solid phase ELISA (starting dilution 1:30, dilution range 1:30-1:3000).

Suitable for use as control antibody for Sox-13 siRNA (h): sc-38424, Sox-13 siRNA (m): sc-38425, Sox-13 shRNA Plasmid (h): sc-38424-SH, Sox-13 shRNA Plasmid (m): sc-38425-SH, Sox-13 shRNA (h) Lentiviral Particles: sc-38424-V and Sox-13 shRNA (m) Lentiviral Particles: sc-38425-V.

Sox-13 (L-19) X TransCruz antibody is recommended for Gel Supershift and ChIP applications.

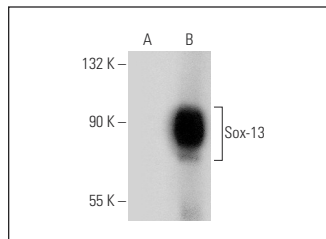
Molecular Weight of Sox-13: 111 kDa.

Positive Controls: Sox-13 (h): 293T Lysate: sc-111779, A-10 nuclear extract: sc-24959 or Jurkat whole cell lysate: sc-2204.

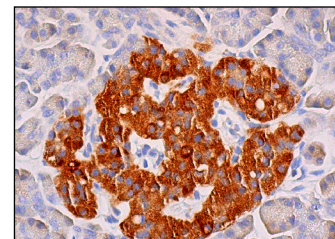
RECOMMENDED SECONDARY REAGENTS

To ensure optimal results, the following support (secondary) reagents are recommended: 1) Western Blotting: use donkey anti-goat IgG-HRP: sc-2020 (dilution range: 1:2000-1:100,000) or Cruz Marker™ compatible donkey anti-goat IgG-HRP: sc-2033 (dilution range: 1:2000-1:5000), Cruz Marker™ Molecular Weight Standards: sc-2035, TBS Blotto A Blocking Reagent: sc-2333 and Western Blotting Luminol Reagent: sc-2048. 2) Immunofluorescence: use donkey anti-goat IgG-FITC: sc-2024 (dilution range: 1:100-1:400) or donkey anti-goat IgG-TR: sc-2783 (dilution range: 1:100-1:400) with UltraCruz™ Mounting Medium: sc-24941. 3) Immunohistochemistry: use ImmunoCruz™: sc-2053 or ABC: sc-2023 goat IgG Staining Systems.

DATA



Sox-13 (L-19): sc-17350. Western blot analysis of Sox-13 expression in non-transfected: sc-117750 (A) and human Sox-13 transfected: sc-111779 (B) whole cell lysates.



Sox-13 (L-19): sc-17350. Immunoperoxidase staining of formalin fixed, paraffin-embedded human pancreas tissue showing cytoplasmic staining of islets of Langerhans.

RESEARCH USE

For research use only, not for use in diagnostic procedures.

PROTOCOLS

See our web site at www.scbt.com or our catalog for detailed protocols and support products.



Try **Sox-13 (B-5): sc-515107** or **Sox-13 (C-16): sc-101156**, our highly recommended monoclonal alternatives to Sox-13 (L-19).