

RPA135 (H-15): sc-17914

BACKGROUND

RNA polymerases transcribe nuclear genes for ribosomal RNA, thus representing ribosomal biogenesis. RNA polymerase I (Pol I) is located in the nucleolus and transcribes class I genes, which code for large ribosomal RNA. Different subunits of the Pol I transcription machinery are targets of various physiological stimuli, which suggests that multiple signaling pathways are involved in carrying out Pol I transcription. RPA16, RPA40 and RPA135 are subunits of Pol I that associate with each other at an early stage of RNA Pol I assembly. RPA40 is essential for the function and integrity of the complex and is also an essential subunit of RNA polymerase III (Pol III).

REFERENCES

1. Nogi, Y., et al. 1991. An approach for isolation of mutants defective in 35S ribosomal RNA synthesis in *Saccharomyces cerevisiae*. Proc. Natl. Acad. Sci. USA 16: 7026-7030.
2. Yao, Y., et al. 1996. Mouse RNA polymerase I 16 kDa subunit able to associate with 40 kDa subunit is a homolog of yeast AC19 subunit of RNA polymerases I and III. J. Biol. Chem. 51: 32881-32885.

SOURCE

RPA135 (H-15) is an affinity purified goat polyclonal antibody raised against a peptide mapping near the N-terminus of RPA135 of human origin.

PRODUCT

Each vial contains 200 µg IgG in 1.0 ml of PBS with < 0.1% sodium azide and 0.1% gelatin.

Blocking peptide available for competition studies, sc-17914 P, (100 µg peptide in 0.5 ml PBS containing < 0.1% sodium azide and 0.2% BSA).

STORAGE

Store at 4° C, ****DO NOT FREEZE****. Stable for one year from the date of shipment. Non-hazardous. No MSDS required.

APPLICATIONS

RPA135 (H-15) is recommended for detection of RPA135 of mouse, rat and human origin by Western Blotting (starting dilution 1:200, dilution range 1:100-1:1000), immunoprecipitation [1-2 µg per 100-500 µg of total protein (1 ml of cell lysate)], immunofluorescence (starting dilution 1:50, dilution range 1:50-1:500) and solid phase ELISA (starting dilution 1:30, dilution range 1:30-1:3000).

RPA135 (H-15) is also recommended for detection of RPA135 in additional species, including equine and bovine.

Suitable for use as control antibody for RPA135 siRNA (h): sc-36436, RPA135 siRNA (m): sc-36437, RPA135 shRNA Plasmid (h): sc-36436-SH, RPA135 shRNA Plasmid (m): sc-36437-SH, RPA135 shRNA (h) Lentiviral Particles: sc-36436-V and RPA135 shRNA (m) Lentiviral Particles: sc-36437-V.

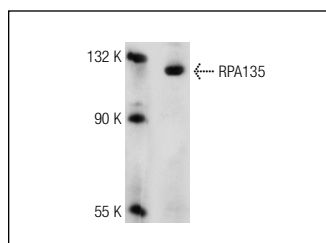
Molecular Weight of RPA135: 128 kDa.

Positive Controls: HeLa nuclear extract: sc-2120, K-562 whole cell lysate: sc-2203 or NIH/3T3 whole cell lysate: sc-2210.

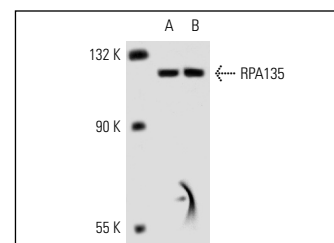
RECOMMENDED SECONDARY REAGENTS

To ensure optimal results, the following support (secondary) reagents are recommended: 1) Western Blotting: use donkey anti-goat IgG-HRP: sc-2020 (dilution range: 1:2000-1:100,000) or Cruz Marker™ compatible donkey anti-goat IgG-HRP: sc-2033 (dilution range: 1:2000-1:5000), Cruz Marker™ Molecular Weight Standards: sc-2035, TBS Blotto A Blocking Reagent: sc-2333 and Western Blotting Luminol Reagent: sc-2048. 2) Immunoprecipitation: use Protein A/G PLUS-Agarose: sc-2003 (0.5 ml agarose/2.0 ml). 3) Immunofluorescence: use donkey anti-goat IgG-FITC: sc-2024 (dilution range: 1:100-1:400) or donkey anti-goat IgG-TR: sc-2783 (dilution range: 1:100-1:400) with UltraCruz™ Mounting Medium: sc-24941.

DATA



RPA135 (H-15): sc-17914. Western blot analysis of RPA135 expression in HeLa nuclear extract.



RPA135 (H-15): sc-17914. Western blot analysis of RPA135 expression in K-562 (A) and NIH/3T3 (B) nuclear extracts.

RESEARCH USE

For research use only, not for use in diagnostic procedures.

PROTOCOLS

See our web site at www.scbt.com or our catalog for detailed protocols and support products.

MONOS
Satisfaction
Guaranteed

Try **RPA135 (4H6): sc-293272**, our highly recommended monoclonal alternative to RPA135 (H-15).