

LSP1 (N-20): sc-17938

BACKGROUND

pp52 (human) or LSP1 (murine) is a hematopoietic-expressed gene that encodes an F-Actin-binding, leukocyte-specific (including B and T lymphocytes, granulocytes and macrophages), 52 kDa phosphoprotein. However, mRNA splice variants that do not encode the 52 kDa lympho-specific protein are expressed from this gene in nonlymphoid cell lines (myocytes, stromal cells and fibroblasts) as well, suggesting that pp52 has a divergent role in signal transduction. The pp52 (LSP1) locus maps to human chromosome 11p15.5, which is implicated in tumor-related chromosomal translocations found in chronic lymphocytic leukemia. The pp52 promoter contains key elements that control transcriptional activity including an initiator specifying the unique 5' terminus of pp52 mRNA, tandem pairs of Ets and SP1 motifs, and a single C/EBP motif. LSP1 binds the cytoskeleton and has been implicated in affecting cytoskeletal remodeling in a variety of leukocyte functions, including cell motility and chemotaxis.

CHROMOSOMAL LOCATION

Genetic locus: LSP1 (human) mapping to 11p15.5.

SOURCE

LSP1 (N-20) is an affinity purified goat polyclonal antibody raised against a peptide mapping at the N-terminus of LSP1 of human origin.

PRODUCT

Each vial contains 200 µg IgG in 1.0 ml of PBS with < 0.1% sodium azide and 0.1% gelatin.

Blocking peptide available for competition studies, sc-17938 P, (100 µg peptide in 0.5 ml PBS containing < 0.1% sodium azide and 0.2% BSA).

STORAGE

Store at 4° C, ****DO NOT FREEZE****. Stable for one year from the date of shipment. Non-hazardous. No MSDS required.

RESEARCH USE

For research use only, not for use in diagnostic procedures.

APPLICATIONS

LSP1 (N-20) is recommended for detection of LSP1 of human origin by Western Blotting (starting dilution 1:200, dilution range 1:100-1:1000), immunoprecipitation [1-2 µg per 100-500 µg of total protein (1 ml of cell lysate)], immunofluorescence (starting dilution 1:50, dilution range 1:50-1:500) and solid phase ELISA (starting dilution 1:50, dilution range 1:50-1:500).

Suitable for use as control antibody for LSP1 siRNA (h): sc-42899, LSP1 shRNA Plasmid (h): sc-42899-SH and LSP1 shRNA (h) Lentiviral Particles: sc-42899-V.

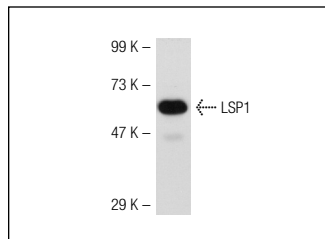
Molecular Weight of LSP1: 52 kDa.

Positive Controls: MOLT-4 cell lysate: sc-2233, Ramos cell lysate: sc-2216 or HuT 78 whole cell lysate: sc-2208.

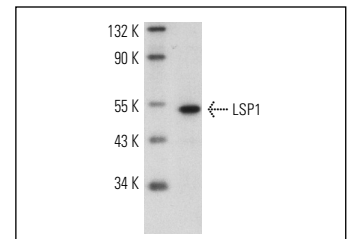
RECOMMENDED SECONDARY REAGENTS

To ensure optimal results, the following support (secondary) reagents are recommended: 1) Western Blotting: use donkey anti-goat IgG-HRP: sc-2020 (dilution range: 1:2000-1:100,000) or Cruz Marker™ compatible donkey anti-goat IgG-HRP: sc-2033 (dilution range: 1:2000-1:5000), Cruz Marker™ Molecular Weight Standards: sc-2035, TBS Blotto A Blocking Reagent: sc-2333 and Western Blotting Luminol Reagent: sc-2048. 2) Immunoprecipitation: use Protein A/G PLUS-Agarose: sc-2003 (0.5 ml agarose/2.0 ml). 3) Immunofluorescence: use donkey anti-goat IgG-FITC: sc-2024 (dilution range: 1:100-1:400) or donkey anti-goat IgG-TR: sc-2783 (dilution range: 1:100-1:400) with UltraCruz™ Mounting Medium: sc-24941.

DATA



LSP1 (N-20): sc-17938. Western blot analysis of LSP1 expression in Ramos whole cell lysate.



LSP1 (N-20): sc-17938. Western blot analysis of LSP1 expression in NCI-H929 whole cell lysate.

SELECT PRODUCT CITATIONS

- Ohira, T., et al. 2004. A stable aspirin-triggered lipoxin A4 analog blocks phosphorylation of leukocyte-specific protein 1 in human neutrophils. *J. Immunol.* 173: 2091-2098.
- McLaughlin, N.J.D., et al. 2006. Platelet-activating factor-induced clathrin-mediated endocytosis requires β-Arrestin-1 recruitment and activation of the p38 MAPK signalosome at the plasma membrane for Actin bundle formation. *J. Immunol.* 176: 7039-7050.

PROTOCOLS

See our web site at www.scbt.com or our catalog for detailed protocols and support products.

MONOS
Satisfaction
Guaranteed

Try **LSP1 (TDP153): sc-53363** or **LSP1 (16): sc-135976**, our highly recommended monoclonal alternatives to LSP1 (N-20).