

DSC1 (L-15): sc-18115



The Power to Question

BACKGROUND

The desmosomal cadherin desmocollin DSC1 is expressed in upper epidermis where strong adhesion is required. DSC1 is a type I membrane protein required for strong adhesion and barrier maintenance in epidermis and contributes to epidermal differentiation. DSC3 is also a type I membrane protein and is expressed in all living epidermal layers, as well as in glandular ducts and in basal matrix cells, and the outer root sheath of hair follicles. DSC3, but not DSC1, is also present in desmosomes of the basal and suprabasal cell layers of other stratified epithelia such as cervix, tongue and esophagus as well as in cells of the basal layer of bladder urothelium and the complex epithelium of trachea. The DSC1 gene comprises 17 exons spanning approximately 33 kb on 18q12.1, and the DSC3 gene comprises 17 exons spanning approximately 49 kb on 18q12.1. Alternative splicing gives rise to two DSC1 and DSC3 isoforms, designated 1A and 1B, and 3A and 3B, respectively, which differ in their carboxy-termini. DSC1 and DSC3 may contribute to epidermal cell positioning by mediating differential adhesiveness between cells that express different isoforms.

CHROMOSOMAL LOCATION

Genetic locus: DSC1 (human) mapping to 18q12.1; Dsc1 (mouse) mapping to 18 A2.

SOURCE

DSC1 (L-15) is an affinity purified goat polyclonal antibody raised against a peptide mapping within an extracellular domain of DSC1 of human origin.

PRODUCT

Each vial contains 200 µg IgG in 1.0 ml of PBS with < 0.1% sodium azide and 0.1% gelatin.

Blocking peptide available for competition studies, sc-18115 P, (100 µg peptide in 0.5 ml PBS containing < 0.1% sodium azide and 0.2% BSA).

RESEARCH USE

For research use only, not for use in diagnostic procedures.

APPLICATIONS

DSC1 (L-15) is recommended for detection of DSC1A and DCS1B of mouse, rat and human origin by Western Blotting (starting dilution 1:200, dilution range 1:100-1:1000), immunoprecipitation [1-2 µg per 100-500 µg of total protein (1 ml of cell lysate)], immunofluorescence (starting dilution 1:50, dilution range 1:50-1:500), immunohistochemistry (including paraffin-embedded sections) (starting dilution 1:50, dilution range 1:50-1:500) and solid phase ELISA (starting dilution 1:30, dilution range 1:30-1:3000).

DSC1 (L-15) is also recommended for detection of DSC1A and DCS1B in additional species, including equine, canine and porcine.

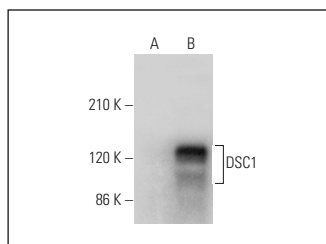
Suitable for use as control antibody for DSC1 siRNA (h): sc-43733, DSC1 siRNA (m): sc-43108, DSC1 shRNA Plasmid (h): sc-43733-SH, DSC1 shRNA Plasmid (m): sc-43108-SH, DSC1 shRNA (h) Lentiviral Particles: sc-43733-V and DSC1 shRNA (m) Lentiviral Particles: sc-43108-V.

Positive Controls: DSC1 (h): 293T Lysate: sc-128492.

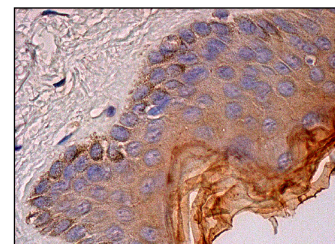
RECOMMENDED SECONDARY REAGENTS

To ensure optimal results, the following support (secondary) reagents are recommended: 1) Western Blotting: use donkey anti-goat IgG-HRP: sc-2020 (dilution range: 1:2000-1:100,000) or Cruz Marker™ compatible donkey anti-goat IgG-HRP: sc-2033 (dilution range: 1:2000-1:5000), Cruz Marker™ Molecular Weight Standards: sc-2035, TBS Blotto A Blocking Reagent: sc-2333 and Western Blotting Luminol Reagent: sc-2048. 2) Immunoprecipitation: use Protein A/G PLUS-Agarose: sc-2003 (0.5 ml agarose/2.0 ml). 3) Immunofluorescence: use donkey anti-goat IgG-FITC: sc-2024 (dilution range: 1:100-1:400) or donkey anti-goat IgG-TR: sc-2783 (dilution range: 1:100-1:400) with UltraCruz™ Mounting Medium: sc-24941. 4) Immunohistochemistry: use ImmunoCruz™: sc-2053 or ABC: sc-2023 goat IgG Staining Systems.

DATA



DSC1 (L-15): sc-18115. Western blot analysis of DSC1 expression in non-transfected: sc-117752 (A) and human DSC1 transfected: sc-128492 (B) 293T whole cell lysates.



DSC1 (L-15): sc-18115. Immunoperoxidase staining of formalin fixed, paraffin-embedded human skin tissue showing cytoplasmic staining of epidermal cells.

SELECT PRODUCT CITATIONS

1. Igawa, S., et al. 2011. Tight junctions in the stratum corneum explain spatial differences in corneodesmosome degradation. *Exp. Dermatol.* 20: 53-57.
2. Panneerdoss, S., et al. 2012. Androgen-responsive microRNAs in mouse sertoli cells. *PLoS ONE* 7: e41146.
3. Bizikova, P., et al. 2012. Cloning and establishment of canine desmocollin-1 as a major autoantigen in canine pemphigus foliaceus. *Vet. Immunol. Immunopathol.* 149: 197-207.
4. Hartlieb, E., et al. 2013. Desmoglein 2 is less important than desmoglein 3 for keratinocyte cohesion. *PLoS ONE* 8: e53739.

STORAGE

Store at 4° C, ****DO NOT FREEZE****. Stable for one year from the date of shipment. Non-hazardous. No MSDS required.

MONOS
Satisfaction
Guaranteed

Try **DSC1 (A-4): sc-398590**, our highly recommended monoclonal alternative to DSC1 (L-15).