

NK 2B4 (M-20): sc-18167

BACKGROUND

Natural killer (NK) cells are bone marrow-derived lymphocytes that can kill certain tumor cells and virally infected cells. There are multiple immunoglobulin superfamily (IgSF) receptor-ligand interactions that coordinate NK cell recognition of target cells and cytolytic function. The IgSF receptor NK 2B4 (CD244) is a ligand for CD48 that is expressed on the surface of all mouse and human NK cells and the subset of T cells that mediate NK 2B4 is a cell surface glycoprotein of the immunoglobulin superfamily that is involved in the regulation of natural killer and T lymphocyte function. 2B4 binds the Src homology 2 domain-containing protein (SH2D1A) or signaling lymphocyte activation molecule (SLAM)-associated protein (SAP), which may function as regulators of 2B4-associated signal transduction pathways. 2B4 is expressed in human spleen, peripheral blood leukocytes, lymph node, bone marrow and fetal liver.

CHROMOSOMAL LOCATION

Genetic locus: CD244 (human) mapping to 1q23.3; Cd244 (mouse) mapping to 1 H3.

SOURCE

NK 2B4 (M-20) is an affinity purified goat polyclonal antibody raised against a peptide mapping near the C-terminus of NK 2B4 of mouse origin.

PRODUCT

Each vial contains 200 µg IgG in 1.0 ml of PBS with < 0.1% sodium azide and 0.1% gelatin.

Blocking peptide available for competition studies, sc-18167 P, (100 µg peptide in 0.5 ml PBS containing < 0.1% sodium azide and 0.2% BSA).

STORAGE

Store at 4° C, ****DO NOT FREEZE****. Stable for one year from the date of shipment. Non-hazardous. No MSDS required.

APPLICATIONS

NK 2B4 (M-20) is recommended for detection of NK 2B4 of mouse, rat and human origin by Western Blotting (starting dilution 1:200, dilution range 1:100-1:1000), immunoprecipitation [1-2 µg per 100-500 µg of total protein (1 ml of cell lysate)], immunofluorescence (starting dilution 1:50, dilution range 1:50-1:500), immunohistochemistry (including paraffin-embedded sections) (starting dilution 1:50, dilution range 1:50-1:500) and solid phase ELISA (starting dilution 1:30, dilution range 1:30-1:3000).

Suitable for use as control antibody for NK 2B4 siRNA (h): sc-42944, NK 2B4 siRNA (m): sc-42945, NK 2B4 shRNA Plasmid (h): sc-42944-SH, NK 2B4 shRNA Plasmid (m): sc-42945-SH, NK 2B4 shRNA (h) Lentiviral Particles: sc-42944-V and NK 2B4 shRNA (m) Lentiviral Particles: sc-42945-V.

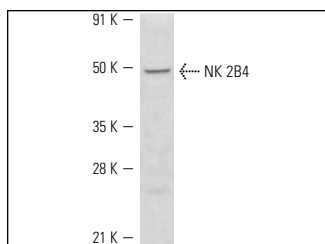
Molecular Weight of NK 2B4: 48-86 kDa.

Positive Controls: Ramos cell lysate: sc-2216, NK-92 whole cell lysate: sc-364788 or human PBL whole cell lysate.

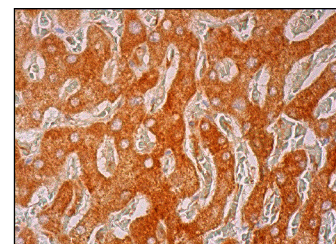
RECOMMENDED SECONDARY REAGENTS

To ensure optimal results, the following support (secondary) reagents are recommended: 1) Western Blotting: use donkey anti-goat IgG-HRP: sc-2020 (dilution range: 1:2000-1:100,000) or Cruz Marker™ compatible donkey anti-goat IgG-HRP: sc-2033 (dilution range: 1:2000-1:5000), Cruz Marker™ Molecular Weight Standards: sc-2035, TBS Blotto A Blocking Reagent: sc-2333 and Western Blotting Luminol Reagent: sc-2048. 2) Immunoprecipitation: use Protein A/G PLUS-Agarose: sc-2003 (0.5 ml agarose/2.0 ml). 3) Immunofluorescence: use donkey anti-goat IgG-FITC: sc-2024 (dilution range: 1:100-1:400) or donkey anti-goat IgG-TR: sc-2783 (dilution range: 1:100-1:400) with UltraCruz™ Mounting Medium: sc-24941. 4) Immunohistochemistry: use ImmunoCruz™: sc-2053 or ABC: sc-2023 goat IgG Staining Systems.

DATA



NK 2B4 (M-20): sc-18167. Western blot analysis of NK 2B4 expression in Ramos whole cell lysate.



NK 2B4 (M-20): sc-18167. Immunoperoxidase staining of formalin fixed, paraffin-embedded human liver tissue showing cytoplasmic staining of hepatocytes.

RESEARCH USE

For research use only, not for use in diagnostic procedures.

PROTOCOLS

See our web site at www.scbt.com or our catalog for detailed protocols and support products.


 MONOS
Satisfaction
Guaranteed

Try **NK 2B4 (2B4.69): sc-80900**, our highly recommended monoclonal alternative to NK 2B4 (M-20).