

Fra-1 (N-17): sc-183

BACKGROUND

The v-Fos oncogene was initially detected in two independent murine osteosarcoma virus isolates and an avian nephroblastoma virus. Members of the c-Fos gene family, including c-Fos, Fos B, Fra-1 and Fra-2, encode nuclear phosphoproteins that are rapidly and transiently induced by a variety of agents and function as transcriptional regulators for several genes. In contrast to c-Jun proteins which form homo- and heterodimers which bind to specific DNA response elements, c-Fos proteins are only active as heterodimers with members of the Jun gene family. In addition, selected ATF/CREB family members can form leucine zipper dimers with Fos and Jun. Different dimers exhibit differential specificity and affinity for AP-1 and CRE sites.

CHROMOSOMAL LOCATION

Genetic locus: FOSL1 (human) mapping to 11q13.1; Fos1 (mouse) mapping to 19 A.

SOURCE

Fra-1 (N-17) is an affinity purified rabbit polyclonal antibody raised against a peptide mapping at the N-terminus of Fra-1 of mouse origin.

PRODUCT

Each vial contains 200 µg IgG in 1.0 ml of PBS with < 0.1% sodium azide and 0.1% gelatin.

Blocking peptide available for competition studies, sc-183 P, (100 µg peptide in 0.5 ml PBS containing < 0.1% sodium azide and 0.2% BSA).

Available as TransCruz reagent for Gel Supershift and ChIP applications, sc-183 X, 100 µg/0.1 ml.

APPLICATIONS

Fra-1 (N-17) is recommended for detection of Fra-1 of mouse, rat and human origin by Western Blotting (starting dilution 1:200, dilution range 1:100-1:1000), immunoprecipitation [1-2 µg per 100-500 µg of total protein (1 ml of cell lysate)], immunofluorescence (starting dilution 1:50, dilution range 1:50-1:500) and solid phase ELISA (starting dilution 1:30, dilution range 1:30-1:3000).

Suitable for use as control antibody for Fra-1 siRNA (h): sc-35405, Fra-1 siRNA (m): sc-35406, Fra-1 shRNA Plasmid (h): sc-35405-SH, Fra-1 shRNA Plasmid (m): sc-35406-SH, Fra-1 shRNA (h) Lentiviral Particles: sc-35405-V and Fra-1 shRNA (m) Lentiviral Particles: sc-35406-V.

Fra-1 (N-17) X TransCruz antibody is recommended for Gel Supershift and ChIP applications.

Molecular Weight of Fra-1: 40 kDa.

Positive Controls: 3611-RF nuclear extract: sc-2143, Fra-1 (h): 293T Lysate: sc-176608 or HeLa nuclear extract: sc-2120.

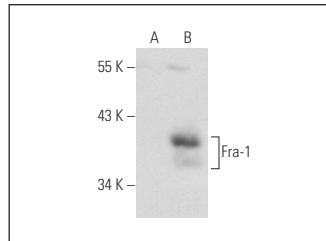
STORAGE

Store at 4° C, ****DO NOT FREEZE****. Stable for one year from the date of shipment. Non-hazardous. No MSDS required.

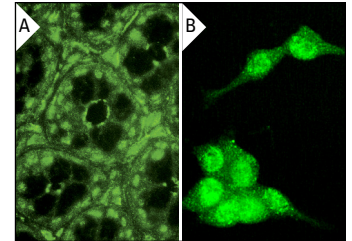
RESEARCH USE

For research use only, not for use in diagnostic procedures.

DATA



Fra-1 (N-17): sc-183. Western blot analysis of Fra-1 expression in non-transfected: sc-117752 (A) and human Fra-1 transfected: sc-176608 (B) 293T whole cell lysates.



Fra-1 (N-17): sc-183. Immunofluorescence staining of normal mouse intestine frozen section (A) and methanol-fixed NIH/3T3 cells (B) showing cytoplasmic and nuclear staining

SELECT PRODUCT CITATIONS

- Sundstedt, A., et al. 1996. *In vivo* energized CD4+ T cells express perturbed AP-1 and NFκB transcription factors. Proc. Natl. Acad. Sci. USA 93: 979-984.
- Singh, N.K., et al. 2010. AP-1 (Fra-1/c-Jun)-mediated induction of expression of matrix metalloproteinase-2 is required for 15S-hydroxyeicosate-traenoic acid-induced angiogenesis. J. Biol. Chem. 285: 16830-16843.
- Tomicic, M.T., et al. 2011. Delayed c-Fos activation in human cells triggers XPF induction and an adaptive response to UVC-induced DNA damage and cytotoxicity. Cell. Mol. Life Sci. 68: 1785-1798.
- Pérez-Cadahía, B., et al. 2011. Role of MSK1 in the malignant phenotype of Ras-transformed mouse fibroblasts. J. Biol. Chem. 286: 42-49.
- Sánchez-Morgan, N., et al. 2011. The lysyl oxidase propeptide interacts with the receptor-type protein tyrosine phosphatase κ and inhibits β-catenin transcriptional activity in lung cancer cells. Mol. Cell. Biol. 31: 3286-3297.
- Stinson, S., et al. 2011. TRPS1 targeting by miR-221/222 promotes the epithelial-to-mesenchymal transition in breast cancer. Sci. Signal. 4: ra41.
- Kong, H.K., et al. 2012. The regulatory mechanism of the LY6K gene expression in human breast cancer cells. J. Biol. Chem. 287: 38889-38900.
- Evellin, S., et al. 2013. FOSL1 controls the assembly of endothelial cells into capillary tubes by direct repression of αV and β3 integrin transcription. Mol. Cell. Biol. 33: 1198-1209.


 MONOS
 Satisfation
 Guaranteed

Try **Fra-1 (D-3): sc-376148** or **Fra-1 (C-12): sc-28310**, our highly recommended monoclonal alternatives to Fra-1 (N-17). Also, for AC, HRP, FITC, PE, Alexa Fluor[®] 488 and Alexa Fluor[®] 647 conjugates, see **Fra-1 (D-3): sc-376148**.