

LTBP-2 (N-20): sc-18340

BACKGROUND

Transforming growth factor (TGF) β is secreted as a part of an inactive complex that frequently contains latent TGF β -binding protein (LTBP). The LTBP family of proteins exhibit a multidomain structure containing cysteine-rich motifs. LTBP-2 is an integral component of elastin-containing microfibrils and contains 20 EGF-like repeats and four copies of an 8-cysteine repeat. LTBP-2 is synthesized as a protein by human foreskin fibroblasts. LTBP-2 co-localizes with tropoelastin in several tissues, including lung, dermis, epicardium, pericardium and heart valves, throughout rodent development and in the spleen in the young adult mouse. Pseudoexfoliation (PEX) syndrome is a systemic condition characterized by the pathologic production and accumulation of an abnormal fibrillar extracellular material in many intra- and extraocular tissues. The co-localization of LTBP-1 and LTBP-2 with latent TGF β 1 and with fibrillin-1 on PEX fibrils suggests a possible mechanism for the regulation of TGF β 1 activity in PEX eyes. The LTBP-2 gene maps to human chromosome 14q24.3.

CHROMOSOMAL LOCATION

Genetic locus: LTBP2 (human) mapping to 14q24.3; Ltbp2 (mouse) mapping to 12 D1.

SOURCE

LTBP-2 (N-20) is an affinity purified goat polyclonal antibody raised against a peptide mapping near the N-terminus of LTBP-2 of human origin.

PRODUCT

Each vial contains 200 μ g IgG in 1.0 ml of PBS with < 0.1% sodium azide and 0.1% gelatin.

Blocking peptide available for competition studies, sc-18340 P, (100 μ g peptide in 0.5 ml PBS containing < 0.1% sodium azide and 0.2% BSA).

STORAGE

Store at 4° C, ****DO NOT FREEZE****. Stable for one year from the date of shipment. Non-hazardous. No MSDS required.

RESEARCH USE

For research use only, not for use in diagnostic procedures.

APPLICATIONS

LTBP-2 (N-20) is recommended for detection of LTBP-2 of human and, to a lesser extent, mouse and rat origin by Western Blotting (starting dilution 1:200, dilution range 1:100-1:1000), immunoprecipitation [1-2 μ g per 100-500 μ g of total protein (1 ml of cell lysate)], immunofluorescence (starting dilution 1:50, dilution range 1:50-1:500) and solid phase ELISA (starting dilution 1:30, dilution range 1:30-1:3000).

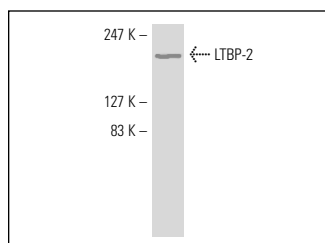
Suitable for use as control antibody for LTBP-2 siRNA (h): sc-43388, LTBP-2 siRNA (m): sc-43389, LTBP-2 shRNA Plasmid (h): sc-43388-SH, LTBP-2 shRNA Plasmid (m): sc-43389-SH, LTBP-2 shRNA (h) Lentiviral Particles: sc-43388-V and LTBP-2 shRNA (m) Lentiviral Particles: sc-43389-V.

Molecular Weight of LTBP-2: 240 kDa.

RECOMMENDED SECONDARY REAGENTS

To ensure optimal results, the following support (secondary) reagents are recommended: 1) Western Blotting: use donkey anti-goat IgG-HRP: sc-2020 (dilution range: 1:2000-1:100,000) or Cruz Marker™ compatible donkey anti-goat IgG-HRP: sc-2033 (dilution range: 1:2000-1:5000), Cruz Marker™ Molecular Weight Standards: sc-2035, TBS Blotto A Blocking Reagent: sc-2333 and Western Blotting Luminol Reagent: sc-2048. 2) Immunoprecipitation: use Protein A/G PLUS-Agarose: sc-2003 (0.5 ml agarose/2.0 ml). 3) Immunofluorescence: use donkey anti-goat IgG-FITC: sc-2024 (dilution range: 1:100-1:400) or donkey anti-goat IgG-TR: sc-2783 (dilution range: 1:100-1:400) with UltraCruz™ Mounting Medium: sc-24941.

DATA



LTBP-2 (N-20): sc-18340. Western blot analysis of LTBP-2 expression in AMJZ-C8 whole cell lysate.

SELECT PRODUCT CITATIONS

1. Peulen, O., et al. 2013. The anti-tumor effect of HDAC inhibition in a human pancreas cancer model is significantly improved by the simultaneous inhibition of cyclooxygenase 2. *PLoS ONE* 8: e75102.
2. Turtoi, A., et al. 2013. Organized proteomic heterogeneity in colorectal cancer liver metastases and implications for therapies. *Hepatology*. E-published.

PROTOCOLS

See our web site at www.scbt.com or our catalog for detailed protocols and support products.


 MONOS
Satisfaction
Guaranteed

Try **LTBP-2 (E-10): sc-166199**, our highly recommended monoclonal alternative to LTBP-2 (N-20).