

MSH2 (N-19): sc-18388

BACKGROUND

The finding that mutations in DNA mismatch repair genes are associated with hereditary nonpolyposis colorectal cancer (HNPCC) has resulted in considerable interest in the understanding of the mechanism of DNA mismatch repair. Initially, inherited mutations in the MSH2 and MLH1 homologs of the bacterial DNA mismatch repair genes MutS and MutL were demonstrated at high frequency in HNPCC and were shown to be associated with microsatellite instability. The demonstration that 10 to 45% of pancreatic, gastric, breast, ovarian and small cell lung cancers also display microsatellite instability has been interpreted to suggest that DNA mismatch repair is not restricted to HNPCC tumors but is a common feature in tumor initiation or progression. Two additional homologs of the prokaryotic MutL gene, designated PMS1 and PMS2, have been identified and shown to be mutated in the germline of HNPCC patients.

CHROMOSOMAL LOCATION

Genetic locus: MSH2 (human) mapping to 2p21; Msh2 (mouse) mapping to 17 E4.

SOURCE

MSH2 (N-19) is an affinity purified goat polyclonal antibody raised against a peptide mapping near the N-terminus of MSH2 of human origin.

PRODUCT

Each vial contains 200 µg IgG in 1.0 ml of PBS with < 0.1% sodium azide and 0.1% gelatin.

Blocking peptide available for competition studies, sc-18388 P, (100 µg peptide in 0.5 ml PBS containing < 0.1% sodium azide and 0.2% BSA).

RESEARCH USE

For research use only, not for use in diagnostic procedures.

APPLICATIONS

MSH2 (N-19) is recommended for detection of MSH2 of mouse, rat and human origin by Western Blotting (starting dilution 1:200, dilution range 1:100-1:1000), immunoprecipitation [1-2 µg per 100-500 µg of total protein (1 ml of cell lysate)], immunofluorescence (starting dilution 1:50, dilution range 1:50-1:500) and solid phase ELISA (starting dilution 1:30, dilution range 1:30-1:3000).

MSH2 (N-19) is also recommended for detection of MSH2 in additional species, including equine, canine, bovine and porcine.

Suitable for use as control antibody for MSH2 siRNA (h): sc-35969, MSH2 siRNA (m): sc-35970, MSH2 shRNA Plasmid (h): sc-35969-SH, MSH2 shRNA Plasmid (m): sc-35970-SH, MSH2 shRNA (h) Lentiviral Particles: sc-35969-V and MSH2 shRNA (m) Lentiviral Particles: sc-35970-V.

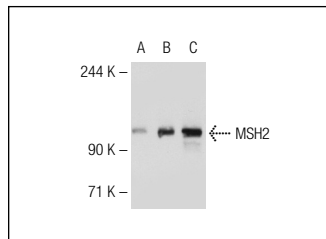
Molecular Weight of MSH2: 100 kDa.

Positive Controls: A-431 whole cell lysate: sc-2201, HeLa nuclear extract: sc-2120 or MSH2 (h): 293 Lysate: sc-172434.

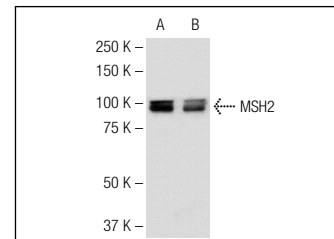
RECOMMENDED SECONDARY REAGENTS

To ensure optimal results, the following support (secondary) reagents are recommended: 1) Western Blotting: use donkey anti-goat IgG-HRP: sc-2020 (dilution range: 1:2000-1:100,000) or Cruz Marker™ compatible donkey anti-goat IgG-HRP: sc-2033 (dilution range: 1:2000-1:5000), Cruz Marker™ Molecular Weight Standards: sc-2035, TBS Blotto A Blocking Reagent: sc-2333 and Western Blotting Luminol Reagent: sc-2048. 2) Immunoprecipitation: use Protein A/G PLUS-Agarose: sc-2003 (0.5 ml agarose/2.0 ml). 3) Immunofluorescence: use donkey anti-goat IgG-FITC: sc-2024 (dilution range: 1:100-1:400) or donkey anti-goat IgG-TR: sc-2783 (dilution range: 1:100-1:400) with UltraCruz™ Mounting Medium: sc-24941.

DATA



MSH2 (N-19): sc-18388. Western blot analysis of MSH2 expression in non-transfected 293: sc-110760 (A), human MSH2 transfected 293: sc-172434 (B) and A-431 (C) whole cell lysates.



MSH2 (N-19): sc-18388. Western blot analysis of MSH2 expression in HeLa nuclear extract (A) and SW480 whole cell lysate (B).

STORAGE

Store at 4° C, **DO NOT FREEZE**. Stable for one year from the date of shipment. Non-hazardous. No MSDS required.

PROTOCOLS

See our web site at www.scbt.com or our catalog for detailed protocols and support products.

MONOS
Satisfaction
Guaranteed

Try **MSH2 (G-7): sc-376501** or **MSH2 (D-9): sc-515356**, our highly recommended monoclonal alternatives to MSH2 (N-19).