

MAO-A (C-19): sc-18396

BACKGROUND

Monoamine oxidase (MAO) is an enzyme of the mitochondrial outer membrane and catalyzes the oxidative deamination of biogenic amines throughout the body. MAO is critical in the neuronal metabolism of catecholamine and indolamine transmitters. Cultured skin fibroblasts show both MAO-A and MAO-B and both MAOs differ in molecular structure. MAO-A, the primary type in fibroblasts, preferentially degrades serotonin and norepinephrine. Only MAO-B is present in platelets and only MAO-A is present in trophoblasts. MAO-B, the primary type found not only in platelets but also in the brain of man and other primates, preferentially degrades phenylethylamine and benzylamine. MAO has been of particular interest to psychiatry and genetics because of the suggestion that low activity is a "genetic marker" for schizophrenia. The genes which encode MAO-A and MAO-B map to human chromosome Xp11.3.

CHROMOSOMAL LOCATION

Genetic locus: MAOA (human) mapping to Xp11.3; MaaA (mouse) mapping to X A1.2.

SOURCE

MAO-A (C-19) is an affinity purified goat polyclonal antibody raised against a peptide mapping near the C-terminus of MAO-A of human origin.

PRODUCT

Each vial contains 200 µg IgG in 1.0 ml of PBS with < 0.1% sodium azide and 0.1% gelatin.

Blocking peptide available for competition studies, sc-18396 P, (100 µg peptide in 0.5 ml PBS containing < 0.1% sodium azide and 0.2% BSA).

STORAGE

Store at 4° C, ****DO NOT FREEZE****. Stable for one year from the date of shipment. Non-hazardous. No MSDS required.

APPLICATIONS

MAO-A (C-19) is recommended for detection of MAO-A of mouse, rat and human origin by Western Blotting (starting dilution 1:200, dilution range 1:100-1:1000), immunofluorescence (starting dilution 1:50, dilution range 1:50-1:500), immunohistochemistry (including paraffin-embedded sections) (starting dilution 1:50, dilution range 1:50-1:500) and solid phase ELISA (starting dilution 1:30, dilution range 1:30-1:3000).

MAO-A (C-19) is also recommended for detection of MAO-A in additional species, including equine, canine, bovine and porcine.

Suitable for use as control antibody for MAO-A siRNA (h): sc-35847, MAO-A siRNA (m): sc-35848, MAO-A shRNA Plasmid (h): sc-35847-SH, MAO-A shRNA Plasmid (m): sc-35848-SH, MAO-A shRNA (h) Lentiviral Particles: sc-35847-V and MAO-A shRNA (m) Lentiviral Particles: sc-35848-V.

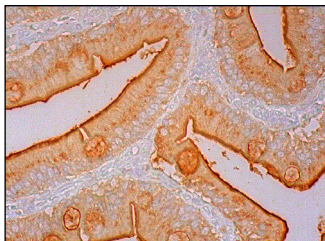
Molecular Weight of MAO-A: 61 kDa.

Positive Controls: Mouse placenta extract: sc-364247.

RECOMMENDED SECONDARY REAGENTS

To ensure optimal results, the following support (secondary) reagents are recommended: 1) Western Blotting: use donkey anti-goat IgG-HRP: sc-2020 (dilution range: 1:2000-1:100,000) or Cruz Marker™ compatible donkey anti-goat IgG-HRP: sc-2033 (dilution range: 1:2000-1:5000), Cruz Marker™ Molecular Weight Standards: sc-2035, TBS Blotto A Blocking Reagent: sc-2333 and Western Blotting Luminol Reagent: sc-2048. 2) Immunofluorescence: use donkey anti-goat IgG-FITC: sc-2024 (dilution range: 1:100-1:400) or donkey anti-goat IgG-TR: sc-2783 (dilution range: 1:100-1:400) with UltraCruz™ Mounting Medium: sc-24941. 3) Immunohistochemistry: use ImmunoCruz™: sc-2053 or ABC: sc-2023 goat IgG Staining Systems.

DATA



MAO-A (C-19): sc-18396. Immunoperoxidase staining of formalin fixed, paraffin-embedded human duodenum tissue showing cytoplasmic and membrane staining of glandular cells.

SELECT PRODUCT CITATIONS

1. Chaitidis, P., et al. 2004. Th2 response of human peripheral monocytes involves isoform-specific induction of monoamine oxidase-A. *J. Immunol.* 173: 4821-4827.

RESEARCH USE

For research use only, not for use in diagnostic procedures.

PROTOCOLS

See our web site at www.scbt.com or our catalog for detailed protocols and support products.

MONOS
Satisfaction
Guaranteed

Try **MAO-A (G-10): sc-271123**, our highly recommended monoclonal alternative to MAO-A (C-19).