

L-Selectin (Mel-14): sc-18850

BACKGROUND

Selectins, also designated CD62 antigens, comprise a family of carbohydrate-binding proteins involved in mediating cellular interactions with leukocytes. L-Selectin (also designated LECAM-1 or CD62L) is expressed on the majority of B and naive T cells and on most monocytes, neutrophils and eosinophils. L-Selectin interacts with specific carbohydrates expressed by activated endothelial cells. P-Selectin (also designated GMP-140 or CD62P), expressed on activated platelets and endothelial cells, and E-Selectin (also designated ELMA-1 or CD62E), expressed on endothelial cells, exhibit overlapping ligand specificities. Both recognize sialyl-Le^x as a ligand and bind to specific carbohydrates on neutrophils and monocytes.

REFERENCES

- Varki, A. 1994. Selectin ligands. Proc. Natl. Acad. Sci. USA 91: 7390-7397.
- Tedder, T.F., et al. 1995. The Selectins: vascular adhesion molecules. FASEB J. 10: 866-873.
- Lasky, L.A. 1995. Selectin-carbohydrate interactions and the initiation of the inflammatory response. Ann. Rev. Biochem. 64: 113-139.
- Pavalko, R.M., et al. 1995. The cytoplasmic domain of L-Selectin interacts with cytoskeletal proteins via α -actinin: receptor positioning in microvilli does not require interaction with α -actenin. J. Cell Biol. 129: 1155-1164.
- McEver, R.P., et al. 1996. Leukocyte trafficking mediated by Selectin-carbohydrate interactions. J. Biol. Chem. 270: 11025-11028.
- Diacovo, T.G., et al. 1996. Platelet-mediated lymphocyte delivery to high endothelial venules. Science 273: 252-255.
- Howard, C.J. 1996. Ruminant cluster CD62L. Vet. Immunol. Immunopathol. 52: 255-256.
- Nicholson, M.W., et al. 1998. Affinity and kinetic analysis of L-Selectin (CD62L) binding to glycosylation-dependent cell-adhesion molecule-1. J. Biol. Chem. 273: 763-770.

CHROMOSOMAL LOCATION

Genetic locus: Sell (mouse) mapping to 1 H2.2.

SOURCE

L-Selectin (Mel-14) is a rat monoclonal antibody raised against C3H/eb mouse B lymphoma 38C-13.

PRODUCT

Each vial contains 200 μ g IgG_{2a} in 1.0 ml of PBS with < 0.1% sodium azide and 0.1% gelatin.

Available as fluorescein (sc-18850 FITC) or phycoerythrin (sc-18850 PE) conjugates for FCM (100 tests in 2.0 ml).

Available azide-free for *in vitro* and *in vivo* blocking of adhesion, sc-18850 L, 200 μ g/0.1 ml.

RESEARCH USE

For research use only, not for use in diagnostic procedures.

APPLICATIONS

L-Selectin (Mel-14) is recommended for detection of L-Selectin of mouse origin by immunoprecipitation [1-2 μ g per 100-500 μ g of total protein (1 ml of cell lysate)], immunofluorescence (starting dilution 1:50, dilution range 1:50-1:500) and flow cytometry (1 μ g per 1 x 10⁶ cells).

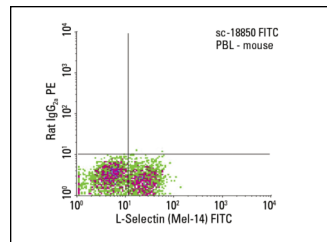
Suitable for use as control antibody for L-Selectin siRNA (m): sc-35771, L-Selectin shRNA Plasmid (m): sc-35771-SH and L-Selectin shRNA (m) Lentiviral Particles: sc-35771-V.

Molecular Weight of L-Selectin: 81 kDa.

RECOMMENDED SECONDARY REAGENTS

To ensure optimal results, the following support (secondary) reagents are recommended: 1) Immunoprecipitation: use Protein A/G PLUS-Agarose: sc-2003 (0.5 ml agarose/ 2.0 ml). 2) Immunofluorescence: use goat anti-rat IgG-FITC: sc-2011 (dilution range: 1:100-1:400) or goat anti-rat IgG-TR: sc-2782 (dilution range: 1:100-1:400) with UltraCruz™ Mounting Medium: sc-24941.

DATA



L-Selectin (Mel-14) FITC: sc-18850 FITC. FCM analysis of mouse peripheral blood leukocytes. Quadrant markers were set based on the isotype control, normal rat IgG_{2a}: sc-2831.

STORAGE

Store at 4° C, **DO NOT FREEZE**. Stable for one year from the date of shipment. Non-hazardous. No MSDS required.

PROTOCOLS

See our web site at www.scbt.com or our catalog for detailed protocols and support products.