

L-Selectin (DREG55): sc-18905

BACKGROUND

Selectins, also designated CD62 antigens, comprise a family of carbohydrate-binding proteins involved in mediating cellular interactions with leukocytes. L-selectin (also designated LECAM-1 or CD62L) is expressed on the majority of B and naive T cells and on most monocytes, neutrophils and eosinophils. L-selectin interacts with specific carbohydrates expressed by activated endothelial cells. P-selectin (also designated GMP-140 or CD62P), expressed on activated platelets and endothelial cells, and E-selectin (also designated ELMA-1 or CD62E), expressed on endothelial cells, exhibit overlapping ligand specificities. Both recognize sialyl-Le^x as a ligand and bind to specific carbohydrates on neutrophils and monocytes.

REFERENCES

1. Varki, A. 1994. Selectin ligands. *Proc. Natl. Acad. Sci. USA* 91: 7390-7397.
2. Tedder, T.F., Steeber, D.A., Chen, A. and Engel, P. 1995. The selectins: vascular adhesion molecules. *FASEB J.* 10: 866-873.
3. Lasky, L.A. 1995. Selectin-carbohydrate interactions and the initiation of the inflammatory response. *Annu. Rev. Biochem.* 64: 113-139.
4. Pavalko, R.M., Walker, D.M., Graham, L., Goheen, M., Doerschuk, C.M. and Kansas, G.S. 1995. The cytoplasmic domain of L-Selectin interacts with cytoskeletal proteins via α -actinin: receptor positioning in microvilli does not require interaction with α -actenin. *J. Cell Biol.* 129: 1155-1164.
5. McEver, R.P., Moore, K.L. and Cummings, R.D. 1996. Leukocyte trafficking mediated by selectin-carbohydrate interactions. *J. Biol. Chem.* 270: 11025-11028.
6. Diacovo, T.G., Puri, K.D., Warnock, R.A., Springer, T.A. and von Andrian, U.H. 1996. Platelet-mediated lymphocyte delivery to high endothelial venules. *Science* 273: 252-255.
7. Howard, C.J. 1996. Ruminant cluster CD62L. *Vet. Immunol. Immunopathol.* 52: 255-256.
8. Nicholson, M.W., Barclay, A.N., Singer, M.S., Rosen, S.D. and van der Merwe, P.A. 1998. Affinity and kinetic analysis of L-Selectin (CD62L) binding to glycosylation-dependent cell-adhesion molecule-1. *J. Biol. Chem.* 273: 763-770.

CHROMOSOMAL LOCATION

Genetic locus: SELL (human) mapping to 1q24.2.

SOURCE

L-Selectin (DREG55) is a mouse monoclonal antibody raised against human peripheral blood leukocytes with PMA.

PRODUCT

Each vial contains 200 μ g IgG₁ kappa light chain in 1.0 ml of PBS with < 0.1% sodium azide and 0.1% gelatin.

L-Selectin (DREG55) is available conjugated to either phycoerythrin (sc-18905 PE) or fluorescein (sc-18905 FITC), 200 μ g/ml, for WB (RGB), IF, IHC(P) and FCM.

APPLICATIONS

L-Selectin (DREG55) is recommended for detection of L-Selectin of human origin by immunofluorescence (starting dilution 1:50, dilution range 1:50-1:500) and flow cytometry (1 μ g per 1×10^6 cells).

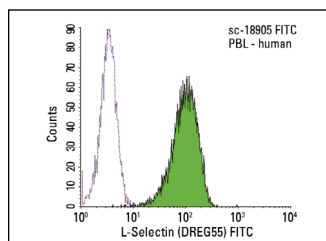
Suitable for use as control antibody for L-Selectin siRNA (h): sc-35770, L-Selectin shRNA Plasmid (h): sc-35770-SH and L-Selectin shRNA (h) Lentiviral Particles: sc-35770-V.

Molecular Weight of L-Selectin: 81 kDa.

RECOMMENDED SUPPORT REAGENTS

To ensure optimal results, the following support reagents are recommended: Immunofluorescence: use m-IgG κ BP-FITC: sc-516140 or m-IgG κ BP-PE: sc-516141 (dilution range: 1:50-1:200) with UltraCruz[®] Mounting Medium: sc-24941 or UltraCruz[®] Hard-set Mounting Medium: sc-359850.

DATA



L-Selectin (DREG55) FITC: sc-18905. FCM analysis of human peripheral blood leukocytes. Black lines histogram represents the isotope control, normal mouse IgG₁-FITC: sc-2855.

STORAGE

Store at 4° C, ****DO NOT FREEZE****. Stable for one year from the date of shipment. Non-hazardous. No MSDS required.

RESEARCH USE

For research use only, not for use in diagnostic procedures.

PROTOCOLS

See our web site at www.scbt.com for detailed protocols and support products.