

Annexin II (C-16): sc-1924

BACKGROUND

The Annexin family of calcium-binding proteins is composed of at least ten mammalian genes and is characterized by a conserved core domain which binds phospholipids in a Ca^{2+} -dependent manner and a unique amino-terminal region which may confer binding specificity. The interaction between these proteins and biological membranes has led to the hypothesis that they are involved in cellular trafficking processes such as endocytosis, exocytosis and cellular adhesion. Annexin I, alternatively referred to as lipocortin, has been implicated as a mediator of the anti-inflammatory response produced by glucocorticoids and as an inhibitor of cPLA_2 , a potent mediator of inflammation. Annexin II, also called p36, exists as a monomer or as a heterotrimer, complexed with the S-100-related protein p11. This complex is termed calpactin I. In the tetrameric form, Annexin II is an efficient substrate of PKC family and Src pp60.

SOURCE

Annexin II (C-16) is an affinity purified goat polyclonal antibody raised against a peptide mapping at the C-terminus of Annexin II of human origin.

PRODUCT

Each vial contains 200 μg IgG in 1.0 ml of PBS with < 0.1% sodium azide and 0.1% gelatin.

Blocking peptide available for competition studies, sc-1924 P, (100 μg peptide in 0.5 ml PBS containing < 0.1% sodium azide and 0.2% BSA).

Available as agarose conjugate for immunoprecipitation, sc-1924 AC, 500 μg /0.25 ml agarose in 1 ml.

APPLICATIONS

Annexin II (C-16) is recommended for detection of Annexin II and, to a lesser extent, Annexin I, III, IV, V, VI, and XI of mouse, rat and human origin by Western Blotting (starting dilution 1:200, dilution range 1:100-1:1000), immunoprecipitation [1-2 μg per 100-500 μg of total protein (1 ml of cell lysate)], immunofluorescence (starting dilution 1:50, dilution range 1:50-1:500) and solid phase ELISA (starting dilution 1:30, dilution range 1:30-1:3000).

Annexin II (C-16) is also recommended for detection of Annexin II and, to a lesser extent, Annexin I, III, IV, V, VI, and XI in additional species, including equine, canine, bovine, porcine and avian.

Molecular Weight of Annexin II monomer: 36 kDa.

Molecular Weight of Annexin II heterotrimer: 90 kDa.

Positive Controls: HeLa whole cell lysate: sc-2200, Annexin II (m2): 293T Lysate: sc-110257 or K-562 whole cell lysate: sc-2203.

RESEARCH USE

For research use only, not for use in diagnostic procedures.

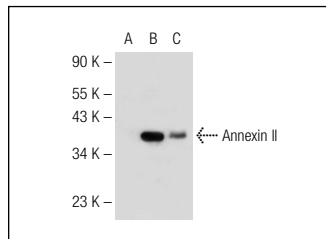
PROTOCOLS

See our web site at www.scbt.com or our catalog for detailed protocols and support products.

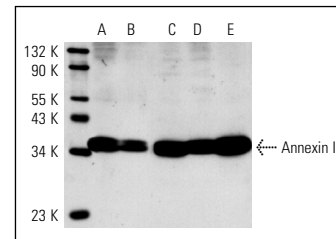
STORAGE

Store at 4° C, ****DO NOT FREEZE****. Stable for one year from the date of shipment. Non-hazardous. No MSDS required.

DATA



Annexin II (C-16): sc-1924. Western blot analysis of Annexin II expression in non-transfected 293T: sc-117752 (A), mouse Annexin II transfected 293T: sc-110257 (B) and K-562 (C) whole cell lysates.



Annexin II (C-16): sc-1924. Western blot analysis of Annexin II expression in HeLa (A), K-562 (B), MDCK (C), NIH/3T3 (D) and KNRK (E) whole cell lysates.

SELECT PRODUCT CITATIONS

- Ren, Q., et al. 2003. Comparative DNA microarray analysis of host cell transcriptional responses to infection by *Coxiella burnetii* or *Chlamydia trachomatis*. Ann. N.Y. Acad. Sci. 990: 701-713.
- Wang, G., et al. 2006. Automated quantification tool for high-throughput proteomics using stable isotope labeling and LC-MSn. Anal. Chem. 78: 5752-5761.
- Mellgren, R.L., et al. 2007. Fetuin A stabilizes μ -calpain and facilitates plasma membrane repair. J. Biol. Chem. 282: 35868-35877.
- Borthwick, L.A., et al. 2008. The annexin 2-S100A10 complex and its association with TRPV6 is regulated by cAMP/PKA/CnA in airway and gut epithelia. Cell Calcium 44: 147-157.
- Yu, M.J., et al. 2008. Large-scale quantitative LC-MS/MS analysis of detergent-resistant membrane proteins from rat renal collecting duct. Am. J. Physiol., Cell Physiol. 295: C661-C678.
- Staubach, S., et al. 2009. Proteomics of MUC1-containing lipid rafts from plasma membranes and exosomes of human breast carcinoma cells MCF-7. Proteomics 9: 2820-2835.
- Lenassi, M., et al. 2010. HIV Nef is secreted in exosomes and triggers apoptosis in bystander CD4⁺ T cells. Traffic 11: 110-122.
- LeBouder, F., et al. 2010. Plasminogen promotes influenza A virus replication through an annexin 2-dependent pathway in the absence of neuraminidase. J. Gen. Virol. 91: 2753-2761.
- Sadeqzadeh, E., et al. 2011. Dual processing of FAT1 cadherin protein by human melanoma cells generates distinct protein products. J. Biol. Chem. 286: 28181-28191.
- Goel, M., et al. 2011. Cochlin induced TREK-1 co-expression and annexin A₂ secretion: role in trabecular meshwork cell elongation and motility. PLoS ONE 6: e23070.