

# LHX1 (C-20): sc-19341

## BACKGROUND

During development, genetically distinct subtypes of motor neurons express unique combinations of LIM-type homeodomain factors, which regulate cell migration and guide motor axons to establish the fidelity of a binary choice in axonal trajectory. The LIM gene family encodes a set of gene products, which carry the LIM domain, a unique cysteine-rich zinc-binding domain. At least 40 members of this family have been identified in vertebrates and invertebrates, and are distributed into 4 groups according to the number of LIM domains and to the presence of homeodomains and kinase domains. The overlapping expression of LHX1, LHX3, LHX4, Isl-1 and Isl-2 in developing motoneurons along the spinal column may influence the establishment of specific motoneuron subtypes. The human LHX1 gene maps to chromosome 17q12 and encodes a 384 amino acid protein. The human LHX1 transcript is assembled from five exons, which are separated by introns ranging in size from 93 nt to 2.3 kb. The two LIM domains are entirely contained in the first and second exons, respectively, while the homeodomain is split into exons three and four.

## REFERENCES

1. Bozzi, F., et al. 1996. The exon-intron structure of human LHX1 gene. *Biochem. Biophys. Res. Commun.* 229: 494-497.
2. Jurata, L.W., et al. 1998. The nuclear LIM domain interactor NLI mediates homo- and heterodimerization of LIM domain transcription factors. *J. Biol. Chem.* 273: 3152-3157.

## CHROMOSOMAL LOCATIONS

Genetic locus: LHX1 (human) mapping to 17q12; Lhx1 (mouse) mapping to 11 C.

## SOURCE

LHX1 (C-20) is an affinity purified goat polyclonal antibody raised against a peptide mapping at the C-terminus of LHX1 of human origin.

## PRODUCT

Each vial contains 200 µg IgG in 1.0 ml of PBS with < 0.1% sodium azide and 0.1% gelatin. Also available as TransCruz reagent for Gel Supershift and ChIP applications, sc-19341 X, 200 µg/0.1 ml.

Blocking peptide available for competition studies, sc-19341 P, (100 µg peptide in 0.5 ml PBS containing < 0.1% sodium azide and 0.2% BSA).

## STORAGE

Store at 4° C, **\*\*DO NOT FREEZE\*\***. Stable for one year from the date of shipment. Non-hazardous. No MSDS required.

## RESEARCH USE

For research use only, not for use in diagnostic procedures.

## PROTOCOLS

See our web site at [www.scbt.com](http://www.scbt.com) or our catalog for detailed protocols and support products.

## APPLICATIONS

LHX1 (C-20) is recommended for detection of LHX1 of mouse, rat and human origin by Western Blotting (starting dilution 1:200, dilution range 1:100-1:1000), immunoprecipitation [1-2 µg per 100-500 µg of total protein (1 ml of cell lysate)], immunofluorescence (starting dilution 1:50, dilution range 1:50-1:500) and solid phase ELISA (starting dilution 1:30, dilution range 1:30-1:3000).

LHX1 (C-20) is also recommended for detection of LHX1 in additional species, including canine, bovine, porcine and avian.

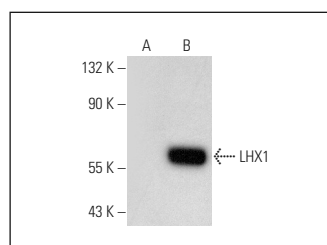
Suitable for use as control antibody for LHX1 siRNA (h): sc-38708, LHX1 siRNA (m): sc-38709, LHX1 shRNA Plasmid (h): sc-38708-SH, LHX1 shRNA Plasmid (m): sc-38709-SH, LHX1 shRNA (h) Lentiviral Particles: sc-38708-V and LHX1 shRNA (m) Lentiviral Particles: sc-38709-V.

LHX1 (C-20) X TransCruz antibody is recommended for Gel Supershift and ChIP applications.

Molecular Weight of LHX1: 45 kDa.

Positive Controls: LHX1 (h): 293T Lysate: sc-369850.

## DATA



LHX1 (C-20): sc-19341. Western blot analysis of LHX1 expression in non-transfected: sc-117752 (A) and human LHX1 transfected: sc-369850 (B) 293T whole cell lysates.

## SELECT PRODUCT CITATIONS

1. Rolando, C., et al. 2010. Extracerebellar progenitors grafted to the neurogenic milieu of the postnatal rat cerebellum adapt to the host environment but fail to acquire cerebellar identities. *Eur. J. Neurosci.* 31: 1340-1351.

**MONOS**  
Satisfaction  
Guaranteed

Try **LHX1 (2A8): sc-293475**, our highly recommended monoclonal alternative to LHX1 (C-20).